

E ∞

S ∞

Steffan Simmentals

Ethan and Katlyn
Steffan

Tom and Deanna
Steffan



12th Annual Bull Sale
February 4, 2023
Bidding closes at 1:00
Killdeer, ND

The **Livestock**™
Link

Livestock Videoing • Video Sales
• Bid-by-Click Online Sales
To view events go to
www.TheLivestockLink.com

Steffan Simmentals
Killdeer ND 58640
12th Annual Bull Sale
Feb. 4th, 2023 Bidding closes at 1:00 MT
Viewing at 10:30, Lunch at 12:00
At the ranch, in the garage

Ethan Steffan	701-290-0374
Tom Steffan	701-290-2484
	701-573-4329

Welcome to our 12th annual 2023 bull sale.

It has been another year for the record books. Coming off of a drought the year before to having two big snow storms in April right in the middle of our calving season brought a lot of extra work. We welcomed some nice rain around the 4th of July before turning dry again for the rest of the summer. November brought us early snow that never left and continued into December with a few blizzards . So this year's cattle have been through a lot. However the bulls we have are very nice. They did well throughout the summer and are a uniform set of bulls. We are also excited to see some of the new genetics being bred with proven bloodlines from the past.

The bulls have been fed the same as they have in the past years. We have been feeding them this way for many years and have had good results. We believe in letting our bulls grow up slowly so they can develop properly and not get over fat, this way they hold together to do their job throughout the breeding season and ensure longevity. We have had many people tell us how they like the condition our bulls stay in throughout the years.

We would also like to give a huge thank you to all of our family and friends who help us throughout the year. It takes a lot of work and they are always there to help us out whether it be branding calves, AI cows, helping with the gathering and hauling, to many more things. We wouldn't be able to do this without all the good help and support that we get, and want them to know that we truly appreciate everything they do for us.

As far as our family goes, we are all doing well and remain very busy. This year we are all very excited for Allison and Andrew to have welcomed their new baby girl, Sawyer Deanna Sampsel into the family. Sawyer was born September 16th, weighing 8 pounds 3 ounces, 21 inches long. She is very alert, active and loves lots of attention. Trenton especially loves her and wishes she was bigger so he could take her to run and play. As for Trenton, he loves everything about the ranch from the tractors to the cows. Trenton is very excited to announce he will have a sibling in May to take along on all his ranch adventures.

We can't wait to see everyone at our upcoming bull sale. We hope to see everybody February 4th, 2023.

Sincerely,
The Steffan's



Bulls can be seen out at the ranch anytime.

Bulls are being fed a mixed ration consisting of corn, distillers, power booster, silage, and chopped hay.

Trucking will be available free of charge up to 200 miles after that we will assist the buyer in the most economical way possible.

All animals left at the ranch after purchase are at the buyers expense. However, we recommend you purchase insurance.

All black bulls are tested or parent verified for homozygous or heterozygous black.

EPDS may change from the time the sale catalog is printed until registration papers are transferred.

We are selling full possession plus 2/3 semen revenue. This means any semen sold on any of the bulls, Steffan Simmentals will receive 1/3 the selling price per unit. We also reserve the right to collect semen on any of the bulls, for our own use. This semen will be collected at our expense and the buyer's convenience.

Bulls were all vaccinated with untrabck cd, vitamin e a&d, and nasalgen 3 pmh at birth. At branding they were given 20/20 vision 7, express 5 pmh, and multimin. At weaning they received vision 7 somnus, express 5 pmh, multimin and poured with ivermax. Bulls have also been dewormed with dectomax. Bulls left at the ranch will be given their first dose of fusogard (footrot vaccine).

We will feed the bulls until May 1st for \$100 and will also semen test the bulls.

Any person attending the sale does so at their own risk. We are also not responsible for any accidents, damaged, or stolen items the day of our sale.

On Feb. 4th we will start selling the bulls. Again this year you can now bid online through the Livestock Link and also view videos of the bulls on their website. On this day the bulls will be sold in a horse race style auction format, it is similar to how we have been doing the sale in the past. There will still be a base price on the bulls and you can bid them up from there. You can bid online or if you choose to come to the sale you can turn your bids into the reps from the Livestock Link. Your bids needs to be in before 1:00, however the sale does not close until there is no bidding for 3-5 mins. We are going to try and speed it up this year so if there is bidding going on 5 mins will be added but at 1:15 if there is still bidding, only 3 mins gets added on until there are no more bids. Make sure you are checking on your lots you are bidding on during the closing process. For more information on this refer to the Livestock Link page in this catalog or call Ethan.

Whatever bulls not sold this day will be sold private treaty on a first come basis. There are also bulls that were kept to be sold private treaty and these bulls can be seen any time.

Directions:

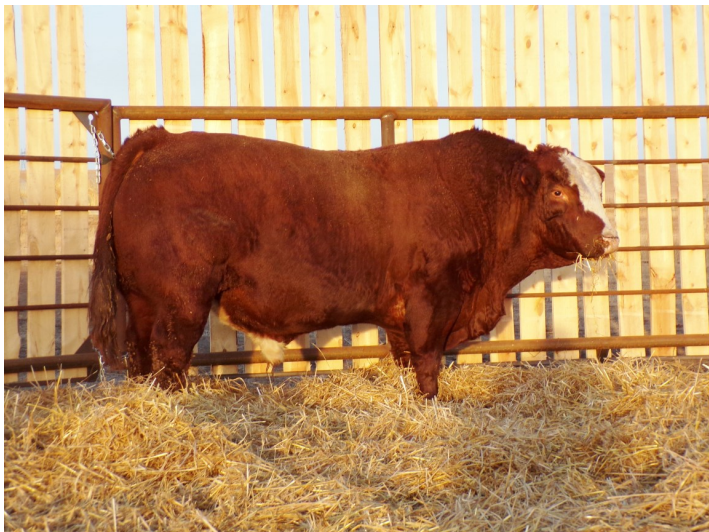
From Dickinson go, North on Hwy 22 to Manning. Go over the bridge and take the first left onto 12th St. going West. Go 1 1/2 miles and take the first road going North. Go to the T then go West, then the road makes you turn and go North. Go to the T and then go West, and then go to the yard.

From Killdeer go South on Hwy 22. Go to 7th St. and turn right going West. Go to the T and turn South, then the road will make you turn to go West. Our mailbox is on that corner. When you get to the mailbox, turn South to the yard.

Thank you for your interest and if you have any questions feel free to call us anytime.



Left to right:
Ethan, Katlyn & Trenton
Tom & Deanna
Andrew, Allison & Sawyer
John & Elissa



SLT Cowboy C100
1/2 SM 1/2 AR ASA #3068416
Cowboy sires lot 40

Cowboy is a bull that we raised and we got to use him until he was 7 years old. This past fall we decided to let him go as we have so many daughters in the herd now and he was getting so big to where it was hard to find enough cows to put with him. The way things turned out we only have one blaze face bull in the sale but he will sure catch your eye. Cowboy will sure be missed in the herd as he was so docile to be around and has made such an impact in our red cow herd. Also contact us if you are interested in buying semen from Cowboy as we have enough stocked up.



KBHR Excalibur G227
PB SM ASA # 3618845
Excalibur sires lots 33-37

Purchased from Keller Broken Heart Ranch in 2020

We were looking for another new red herd sire that would provide a little more calving ease and some more maternal qualities, without giving up performance, to use on our Cornerback and Cowboy daughters and Excalibur was who we found. He has 15 epds in the top 35% of the breed or better, with his API in the top 15% (152.8) and TI in the top 5% (95.3). His calving ease, birth weight, and maternal calving ease epds are in the top 5%. His 5 bulls in the sale are some of the top in the pen, they are dark red. Excalibur's calves are deep and thick and were liked last year and they sure will be liked again this year.



TNT Bullseye E384

PB SM ASA # 3313385

Bullseye sires lots 12&13

Purchased from TNT Simmentals in 2018

Bullseye was picked out to add a little white on the face as well as his tremendous length. This will be the last set of calves out of him as he got injured last winter. So don't miss out on the opportunity to own one of his sons, as he sires calves that are long sided that grow fast and a few of them will have a blaze face.



LCDR Benefit 154H

PB SM ASA # 3812187

Purchased from Lazy C Diamond Ranch in 2021

Sires lots 2-5

Benefit is a bull we are really excited about. His sire is LCDR Impact 134F, was the \$130,000 bull that sold in Lazy C Diamond Ranch's sale in 2019, so this was the first set of his offspring that sold and Benefit was the first son of his to sell in LCDR's sale. Benefit was our pick out of all the Impact sons to sell. He is a bull that has so much to offer, he started out at 86 pounds at birth and weaned off at 843 pounds. Benefit's epd's as you can see below are great to look over as he also rates in the top 15% for docility. Not only does he have great epd's his ultrasound data is just as good, having a ratio of 107 in adj BF and a 115 ratio in adj REA with a 17.26. He may be awesome on paper but looking him over will impress you just as much. We only have a small sample of bulls in the offering, as we have not been able to collect him yet, but we do plan on to AI a lot of cows to him when we do. However these bulls are sure some standouts so make sure to take a look.

	CE	BW	WW	YW	MCE	MM	MWW	CW	YG	MB	BF	REA	API	TI
EPD	13.2	0.6	101.9	158.6	7.7	31.7	82.6	48.1	-0.39	0.31	-0.08	1.07	150.5	99.5
%	20	30	2	2	20	10	1	5		20		15	20	2



Hook's Franco 28F
 PB SM ASA # 3403340
 Franco sires lots 6-11

Purchased from Hooks Farms in 2019

Well we said we would have more Franco sons in this years sale and we do. As always he sires calves with lots of performance. His sons are all very attractive bulls that perform at the top end. Along with his performance, Franco is super docile, his epd is in the top 1%. He is very easy to handle and to be around and he passes it on to his offspring. We calved out his first daughters last year and they are some of the most docile heifers we have and they had very nice udders that raised nice calves. We are sure looking forward to what his females will do in years to come.



Future Herd Sire

TNT Jager J301
 1/2 SM 1/2 AN ASA # 3942376

Purchased from TNT Simmentals in 2022

Jager was purchased as a heifer bull, and we were able to collect him right away and AI many heifers to him. He is a Gibbs Southern Comfort son and on the dams side he goes back to TNT Revenant and TNT Tuition with SAV Final Answer and Mytty In Focus being farther back in his pedigree so he is stacked with calving ease. We are really looking forward to calving the heifers bred to him, and hopefully have some of his calving ease bulls in next years sale.

	CE	BW	WW	YW	MCE	MM	MWW	CW	YG	MB	BF	REA	API	TI
EPD	20.2	-4.3	77.6	126.8	11.8	24.2	63.0	33.3	-0.07	0.63	-0.03	0.31	165.6	93.1
%	1	3	45	30	2	40	40	45		10			10	10

Lot 1 **K501** **5/8 SM 3/8 AN**
 BD: 4-2-22 BW:84 205 WW: 671 Ratio: 92
 Blk Homozygous Black Reg: 4133968

GW ROBUST 605Z
 LRS DAKOTA BUST 107C
 LRS MS DAKOTA 559R

S A V BISMARCK 5682

STE MISS C501

STE MISS TRUE A176

	CE	BW	WW	YW	MCE	MM	MWW	CW	YG	MB	BF	REA	API	TI
EPD	9.8	0.9	79.7	119.3	4.4	22.7	64.8	41.0	-0.31	0.21	-0.06	0.92	127.7	76.4
%			30	30			50	35	30		35	20		

The only Dakota Bust son in the sale this year but still a top end bull. He comes from a moderate framed, easy keeping Bismarck daughter that always raises a good calf. He has more calving ease than past Dakota Bust sons and a lower birth weight starting at 84 pounds while still being in the top 30% for performance.



Lot 2 **K8** **PB SM**
 BD: 3-18-22 BW:85 205 WW: 743 Ratio: 102
 Blk Homozygous Black Reg: 4134159

LCDR IMPACT 134F
 LCDR BENEFIT 154H

CDI MS ENTREPRENEUR 13B

Z228

TNT TANKER U263

U829

	CE	BW	WW	YW	MCE	MM	MWW	CW	YG	MB	BF	REA	API	TI
EPD	9.4	2.2	94.1	142.8	6.3	27.0	74.5	41.0	-0.42	0.08	-0.09	1.04	137.8	86.1
%			10	10	25	35	15	20	45		30	20	40	25

Here is the start to the Benefit sons. K8 is a purebred out of a Tanker daughter that we purchased from Binstock Simmentals. He is a big mid-dled bull and with the Benefit and Tanker cross he will bring lots of performance while still being a good maternal bull.



Lot 3 **K142** **PB SM**
 BD: 4-22-22 BW:85 205 WW: 677 Ratio: 95
 Blk Homozygous Black Reg: 4134250

LCDR IMPACT 134F
 LCDR BENEFIT 154H
 CDI MS ENTREPRENEUR 13B
 RPLUS 7075T
 L HOIBY MS EDGE W9142
 L HOIBY MS PRE BEEF R502

	CE	BW	WW	YW	MCE	MM	MWW	CW	YG	MB	BF	REA	API	TI
EPD	9.8	2.8	86.6	129.0	6.0	36.0	80.8	38.1	-0.41	0.20	-0.09	0.94	142.1	84.6
%			30	30	30	3	10	40	50	40	30		40	30

K142 is the first bull calf we got out of this coming 14 year old cow. She has many daughters in the herd, with one of them being the dam to lot 6, and we have always been wanting a bull out of her. This bull has longevity bred into him for as long as his dam has been in production, she is also a very good milking cow which you can see by this bulls milk epd being in the top 3%.



Lot 4 **K68** **3/4 SM 1/4 AN**
 BD: 4-8-22 BW:82 205 WW: 827 Ratio: 114
 Blk Homozygous Black Reg: 4134116

LCDR IMPACT 134F
 LCDR BENEFIT 154H
 CDI MS ENTREPRENEUR 13B
 OPEN A 50W IN FOCUS B270
 STE MISS D68
 KR MISS W107

	CE	BW	WW	YW	MCE	MM	MWW	CW	YG	MB	BF	REA	API	TI
EPD	13.8	0.6	97.4	148.1	7.6	26.4	73.2	43.0	-0.20	0.24	-0.05	0.66	140.9	89.1
%	25	45	10	10	25	15	4	15			35	50	40	20

Herd Sire Prospect. Here is the top wean weight bull that has always been a standout since he was born. He has a lot of length and is a very complete made bull. His dam is a nice milking, broody made cow that passes on her depth to her offspring. This bull will definitely catch lots of eyes come sale day.



Lot 5 **K640** **3/4 SM 1/4 AN**
 BD: 4-01-22 BW:85 205 WW: 696 Ratio: 96
 Blk Homozygous Black Reg: 4134141

LCDR IMPACT 134F
 LCDR BENEFIT 154H
 CDI MS ENTREPRENEUR 13B
 SAND RANCH HAND
 PVSB 640Y
 BASIN ERICA 927M

	CE	BW	WW	YW	MCE	MM	MWW	CW	YG	MB	BF	REA	API	TI
EPD	12.1	0.3	86.8	135.7	7.8	30.1	75.0	44.3	-0.27	0.41	-0.06	0.81	141.2	88.0
%	40	45	15	15	25	20	15	25	40	35	25	35	35	20

Another Benefit son out of an older proven Sand Ranch Hand cow. He is a deep made bull that will be a little more moderate than the rest of his half brothers, but he won't give up any performance. Also check out his epds that can't be faulted.



Lot 6 **K42** **PB SM**
 BD: 4-08-22 BW:91 205 WW: 805 Ratio: 112
 Blk Homozygous Black Reg:

LRS TENX EXCELLANCE 352C
 HOOK'S FRANCO 28F
 HOOK'S UPBEAT 55U
 SRF OLIE 027X
 MISS SLT Z42
 L HOIBY MS EDGE W9142

	CE	BW	WW	YW	MCE	MM	MWW	CW	YG	MB	BF	REA	API	TI
EPD	8.3	3.6	98.4	149.2	4.5	28.9	75.3	41.9	-0.42	-0.04	-0.08	1.09	130.0	84.0
%			10	10		10	4	10	45			10		35

Here come the Franco sons and what a way to start them. Here is a larger framed, long made bull that is a half brother to last years high selling bull. His dam has raised so many favorites and K42 is definitely going to follow in those footsteps. He made it past the 800 pound weaning mark, carrying lots of growth.



Lot 7 **K823** **PB SM**
 BD: 3-22-22 BW:78 205 WW: 745 Ratio: 102
 Blk Homozygous Black Reg: 4134161

LRS TENX EXCELLANCE 352C
 HOOK'S FRANCO 28F
 HOOK'S UPBEAT 55U
 LRS DAKOTA BUST 107C
 STE MISS BUST F823
 MEYER RANCH W910

	CE	BW	WW	YW	MCE	MM	MWW	CW	YG	MB	BF	REA	API	TI
EPD	7.8	1.1	88.0	133.0	2.7	24.9	68.9	36.3	-0.43	-0.01	-0.08	1.09	126.8	81.2
%		35	20	20		45	25	25	40			15		40

Here is a Franco and Dakota Bust cross and it sure does make for a good pairing. He comes from a great cow family and his granddam W910 is still on the place as a coming 14 year old cow.



Lot 8 **K795** **PB SM**
 BD: 4-10-22 BW:84 205 WW: 621 Ratio: 96
 Blk Homozygous Black Reg: 4134126

LRS TENX EXCELLANCE 352C
 HOOK'S FRANCO 28F
 HOOK'S UPBEAT 55U
 LRS DAKOTA BUST 107C
 STE MISS BUST E795
 STR 6092 YEVA Y119

	CE	BW	WW	YW	MCE	MM	MWW	CW	YG	MB	BF	REA	API	TI
EPD	8.6	1.8	87.2	135.4	3.2	23.8	68.3	41.0	-0.41	0.01	-0.08	1.09	125.7	80.6
%			25	20			40	20				20		45

Another bull with very similar genetics to lot 7. They would make a good pair to run together as both dams can always raise good calves. K795's dam also raised a bull in last years sale selling to Ron Floyd.



Lot 9 **K591** **PB SM**
 BD: 4-16-22 BW:88 205 WW: 746 Ratio: 112
 Blk Homozygous Black Reg: 4133948

LRS TENX EXCELLANCE 352C
 HOOK'S FRANCO 28F
 HOOK'S UPBEAT 55U
 KR SHARP SHOOTER Z33
 STE MISS C591
 MEYER RANCH 223Z

	CE	BW	WW	YW	MCE	MM	MWW	CW	YG	MB	BF	REA	API	TI
EPD	9.0	1.9	86.3	130.7	4.2	28.6	69.9	30.9	-0.34	0.04	-0.07	0.85	128.6	80.6
%			30	30		10	15	35				45		50

This dam really out did her self raising this bull, having a wean ratio of 112. The Sharp Shooter dams are really good milking cows that breed back and are easy keepers. This was a good cross with Franco to make a really nice bull.



Lot 10 **K636** **PB SM**
 BD: 4-11-22 BW:84 205 WW: 681 Ratio: 106
 Blk Homozygous Black Reg: 4134209

LRS TENX EXCELLANCE 352C
 HOOK'S FRANCO 28F
 HOOK'S UPBEAT 55U
 B20
 D636
 B463

	CE	BW	WW	YW	MCE	MM	MWW	CW	YG	MB	BF	REA	API	TI
EPD	10.5	1.8	88.5	137.4	4.3	20.8	64.3	32.8	-0.38	-0.07	-0.08	0.89	126.1	79.2
%	50		15	15			35	25				40		45

Another great Franco son out of a Binstock cow. He is a nice moderate, square made bull with a big hip on him. His mother has a nice udder and is a great producer bringing lots of performance.



Lot 11 **K702** **3/4 SM 1/4 AN**
 BD: 4-18-22 BW:90 205 WW: 671 Ratio: 104
 Blk Homozygous Black Reg: 4134068

LRS TENX EXCELLANCE 352C
 HOOK'S FRANCO 28F
 HOOK'S UPBEAT 55U

KG HIGH REGARD 2073
 STE MISS REGARD E702
 STE MISS C519

	CE	BW	WW	YW	MCE	MM	MWW	CW	YG	MB	BF	REA	API	TI
EPD	11.8	0.5	83.6	133.3	5.7	21.7	62.6	41.5	-0.28	-0.01	-0.05	0.95	116.3	74.6
%			20	20			35	20	35		50	10		

Here is one of the most docile bulls in the pen, he is so easy to be around and while in the video pen he could care less what we were doing. He definitely got Franco's disposition. He is a nice moderate framed bull with lots of depth and a big hip.



Lot 12 **K898** **3/4 SM 1/8 AN 1/8 CS**
 BD: 4-05-22 BW:88 205 WW: 722 Ratio: 112
 Blk Heterozygous Black Reg: 4133933

WBF SIGNIFICANT B132
 TNT BULLSEYE E384
 TNT MISS B130

HOOK'S YELLOWSTONE 97Y
 STE MIS YELLOWSTONE F898
 MISS SLT Z45

	CE	BW	WW	YW	MCE	MM	MWW	CW	YG	MB	BF	REA	API	TI
EPD	9.6	2.8	89.8	139.5	5.4	26.6	69.3	40.8	-0.45	0.12	-0.10	1.05	128.4	84.1
%			15	15		5	5	15	4		4	3		35

Here is the first of two Bullseye son's. Just like Bullseye he is long and has lots of performance. On his dams side he brings lots of milk and longevity. His grandmother is the dam to lot 25 and is a coming 11 year old.



Lot 13 **K027** **3/4 SM 1/4 AN**
 BD: 4-01-22 BW:83 205 WW: 765 Ratio: 107
 Blk Blaze Homozygous Black Reg: 4134266

WBFS SIGNIFICANT B132
 TNT BULLSEYE E384
 TNT MISS B130

S A V BISMARCK 5682
 STE MISS BISMARCK A27
 MISS SLT Y27W

	CE	BW	WW	YW	MCE	MM	MWW	CW	YG	MB	BF	REA	API	TI
EPD	10.8	2.4	91.0	140.1	6.4	24.3	68.6	37.5	-0.36	0.15	-0.07	1.00	129.7	81.1
%			10	10		20	10	20	15		25	4		40

Herd Sire Prospect with a Blaze face. This bull is a wide topped bull with lots of depth. His Bismarck dam is what I wished all my cows were like. She is an awesome milking cow with depth, length, and docility. We will be calving a full sister to K027 and she looks amazing and we are really looking forward to her future.



Lot 14 **K116** **PB SM**
 BD: 3-23-22 BW:82 205 WW: 791 Ratio: 109
 Blk Homozygous Black Reg: 4134006

HOOK'S EAGLE 6E
 TJ BIG BANG 421H

TJ 12D

TNT PUNCH Y260

STE MISS B116

HSR MISS TEDDY U567

	CE	BW	WW	YW	MCE	MM	MWW	CW	YG	MB	BF	REA	API	TI
EPD	10.2	0.4	85.4	131.2	5.5	24.9	66.3	40.6	-0.37	0.21	-0.09	0.92	143.7	86.2
%	35	20	30	25	35	25	25	30		35			30	25

Another standout bull from the start. He is full of muscle and having Punch in his background means he also has maternal traits. He does have a spot in his eye from having pink eye over the summer but the scar never left it is a small spot and he can see out of it so there is no need to worry about it.



Lot 15 **K950** **PB SM**
 BD: 3-25-22 BW:85 205 WW: 702 Ratio: 105
 Blk Homozygous Black Reg: 4134167

TJ BIG BANG 421H HOOK'S EAGLE 6E
 TJ 12D
 DJF C593
 STE MISS G950 KR MS HARLEY Z64

	CE	BW	WW	YW	MCE	MM	MWW	CW	YG	MB	BF	REA	API	TI
EPD	9.6	1.7	89.1	135.7	4.4	28.2	72.1	44.0	-0.38	0.26	-0.08	1.03	142.1	88.2
%	45	40	25	25		15	15	30		25		20	30	20

This is the first time we used Big Bang and he worked well for us. We bred him to mainly 3 year old cows and the calves all came small at birth and grew fast. The Big Bang calves also came jet black in color which is another plus to this sire group.



Lot 16 **K971** **PB SM**
 BD: 3-22-22 BW:77 205 WW: 656 Ratio: 102
 Blk Homozygous Black Reg: 4134054

TJ BIG BANG 421H HOOK'S EAGLE 6E
 TJ 12D
 DJF C593
 STE MISS G971 SLT MISS B061

	CE	BW	WW	YW	MCE	MM	MWW	CW	YG	MB	BF	REA	API	TI
EPD	10.4	0.6	87.9	132.5	4.2	25.7	69.7	45.0	-0.42	0.24	-0.09	1.09	145.4	88.4
%	35	25	25	25		30	25	30		30		35	25	20

Here is a flashy made bull. He is moderate framed and moves out nicely. Starting out at only 77 pounds at birth he would be a good bull for a set of 3 year old cows, keeping calving ease in check while still growing.



Lot 17 **K913** **PB SM**
 BD: 3-20-22 BW:69 205 WW: 615 Ratio: 92
 Blk Heterozygous Black Reg: 4134199

HOOK'S EAGLE 6E
 TJ BIG BANG 421H
 TJ 12D
 TJ POWER GRID 363Y
 STE MISS POWER GRID G913
 STE MISS BREAK FREE D690

	CE	BW	WW	YW	MCE	MM	MWW	CW	YG	MB	BF	REA	API	TI
EPD	10.8	0.9	84.1	131.8	4.9	25.7	70.0	45.8	-0.34	0.20	-0.06	1.04	143.5	84.6
%	20	15	35	25	20	50	35	35		35			25	25

A bull made very similar to lot 16. He comes from a good cow family that we can always count on to bring in a good calf in the fall, his great grand-dam is the dam to lot 20 who has raised many bulls for us. Not only that check out his eps he will be good at birth to weaning all the way to making good females.



Lot 18 **K324** **5/8 SM 3/8 AN**
 BD: 4-05-22 BW:88 205 WW: 797 Ratio: 110
 Blk Homozygous Black Reg: 4134039

WCS EL DORADO 5209C
 DARADO F48
 X048
 HART PAYWEIGHT 5015
 BRANT THEORY E324C
 BRANT CONSPIRACY C324A

	CE	BW	WW	YW	MCE	MM	MWW	CW	YG	MB	BF	REA	API	TI
EPD	10.9	1.2	81.6	128.2	6.6	23.3	61.5	42.3	-0.22	0.11	-0.05	0.74	126.2	75.2
%			30	30		15	15	10				25		

K324 is a high wean weight bull that will add pounds in the fall. E324 is a moderate framed cow that milks really well so crossing her with Darado who is a large framed bull worked really well. Make sure to look this guy up on sale day as he will make a great addition in many ways to a cow herd.



Bid Online!

If you are unable to attend the sale, you can register to watch or bid online through The Livestock Link by following these instructions:

The Livestock Link

Livestock
• Bid

www.TheLivestockLink.com

- Visit our website, www.thelivestocklink.com
- Click the "Auctions" tab
- Click on "Click Here to Register"
- Enter your e-mail address and password, and fill out the registration form
- Fill out your Banking Information. If you are only watching, the card number and expiration date can be left blank.
- Check the checkbox at the bottom of the page that says "I agree to the terms and conditions"
- Click "Register" at the bottom of the page
- You will receive an email with a link to activate your account
- Please register to bid at least 24 hours in advance
- Contact Aaron Friedt at (701) 590-9597 for help or questions

You will receive an email when you are approved for bidding. After you receive a bidder number only after you have made a purchase in person. If you are not at the sale and the auction is completed, please contact the sale owner or manager for instructions.

To use our service, you must have a valid credit card.

Questions?

→ Contact Aaron Friedt at (701) 590-9597

www.TheLivestockLink.com

How the Horse Race style auction works

To bid, please visit www.TheLivestockLink.com and click on the "Auctions" tab and click on "Register" in the User Login box and create an account. After that, click on "Click here to register" and after reading them, click "Click here if you agree." You can now bid.

The rules of this static auction are as follows:

- The auction will open on Thursday February 2nd, 2023 at 5:00 pm MST
- This auction is a Horse Race style auction, so ALL LOTS will be extended 3 minutes until no more bids are placed.

When no bids are placed in the last 3 minutes all lots will be closed simultaneously.

- Each lot will start at a floor price and will be bid up from that price.
- The lots will be bid up in standard increments. You may place a proxy bid (a maximum amount set by you) every time another bid is placed against the lot (often to keep up with the current bid. It is important to be online during the closing process so you can keep a close eye on your prospects).

- Buy Now Option allows a bidder to buy the Lot at the price designated on the lot card.

• For those bidders attending the Open House at the ranch please see the lot cards for bids during the auction. **Remember! All bidding will be done online** and will be bidding against people that are not at the sale but are bidding online.

If you have any questions concerning this online auction please contact Aaron Friedt at (701) 590-9597

Aaron Friedt

701.590.9597

friedtaaron@gmail.com

Support

jared@blackhills.com

605.920.9261

vestockTM

Click Videoing • Video Sales
Click-by-Click Online Sales
To view events go to
LivestockLink.com

Link

Provide all your contact information
Before viewing the sale and do not wish to bid, this information

requires you to say "I'm not a robot" to prove you are a real person

and create an account.
This is required for the sale.
Contact us with any questions.

All applications will be reviewed and processed promptly. You will receive a confirmation number for the sale, and that number will only be used at that sale. When the sale is complete, we will provide instructions of payment and delivery of your purchase. You must have access to High Speed Internet.

Questions?

Call us or Support at (605) 920-9261



Visit LivestockLink.com

Click the "Log In" tab. If you do not have an account, please click "Click Here to Register" to create an account on the sale you would like to bid on. Read the Terms and Conditions, and click "I Agree".

The sale starts and closes on Saturday February 4th, 2023 at 1:00 pm mst .
The sale will close by 3-5 minutes if there is a bid on ANY LOT within the last 3-5 minutes.

Bids are placed simultaneously.

Maximum bid (max) bid. This feature will automatically bid for you (up to a maximum of 5% above your current bid) if you are the highest bidder. Please visit the site regularly and make sure you refresh the page frequently.

Multiple lots.

Lots are listed as "Buy Now"

Contact the TLL Representative to get your bidder number so you can place bids. Bidders will have to bid through the TLL Rep or via the Internet from their home or other location.

Please contact Aaron Friedt or Support:

Lot 19 **K510** **3/4 SM 1/4 AN**
 BD: 4-06-22 BW:80 205 WW: 745 Ratio: 102
 Blk Homozygous Black Reg: 4133960

DARADO F48 WCS EL DORADO 5209C
 X048
 CONNEALY THUNDER
 STE MISS C510 STE MISS A40

	CE	BW	WW	YW	MCE	MM	MWW	CW	YG	MB	BF	REA	API	TI
EPD	11.7	0.4	69.6	108.6	7.3	24.8	58.8	31.7	-0.33	0.10	-0.07	0.81	124.3	69.3
%					30	20	40	40	20		25	20		

K510 is a wide topped bull with a big hip and lots of depth. Crossing his dam with Darado worked really well and this bull will bring lots of maternal abilities into your herd.



Lot 20 **K159** **1/2 SM 1/2 AN**
 BD: 3-31-22 BW:87 205 WW: 791 Ratio: 109
 Blk Homozygous Black Reg: 4134173

ELLINGSON ROUGHRIDER 4202
 ELLINGSON ROUGHRIDER 9127
 EA PRIMROSE 3177
 MRL 161X
 MS NLC 161X Z2159 MS NLC STRATEGY U8765 B

	CE	BW	WW	YW	MCE	MM	MWW	CW	YG	MB	BF	REA	API	TI
EPD	9.9	2.2	88.0	138.7	6.8	24.6	66.7	48.1	-0.12	0.17	-0.02	0.74	120.9	78.8
%			20	20	45	20	15	10				35		

A big framed half blood bull with proven genetics. He comes from an angus bull and a large framed cow. Use him on some mature cows to see lots of growthy calves that will make some great feeders.



Lot 21 **K65** **1/4 SM 3/4 AN**
 BD: 3-30-22 BW:80 205 WW: 734 Ratio: 101
 Blk Homozygous Black Reg: 4134206

ELLINGSON ROUGHRIDER 4202
 ELLINGSON ROUGHRIDER 9127
 EA PRIMROSE 3177

TNT DUAL FOCUS T249
 BRANT CHASTITY C65A
 BRANT ANIKA A65

	CE	BW	WW	YW	MCE	MM	MWW	CW	YG	MB	BF	REA	API	TI
EPD	14.5	-0.8	75.2	118.0	9.2	25.5	62.8	42.9	0.04	0.38	0.02	0.48	131.3	78.2
%	25	30		50	15	25	35	20		40				

Here is a low percentage Simmental bull out of a dam that if she has a bull it will be in the sale. He is also a bull with great maternal traits that will make some awesome females.



Lot 22 **K128** **5/8 SM 3/8 AN**
 BD: 4-23-22 BW:88 205 WW: 730 Ratio: 109
 Blk Homozygous Black Reg: 4134064

TJ ROOSEVELT 366E
 TNT MR TEDDY G396
 TNT MISS C123
 S A V BISMARCK 5682
 STE MISS B128
 MISS GD Y301

	CE	BW	WW	YW	MCE	MM	MWW	CW	YG	MB	BF	REA	API	TI
EPD	12.1	0.8	83.7	123.3	9.1	26.3	66.0	30.6	-0.22	0.23	-0.04	0.68	139.5	79.8
%			35	45	25	15	15	45				40	40	50

We bought Teddy to use on some higher birth weight cows without sacrificing performance but also adding even more maternal traits. His mother has given us a lot of heifers over the past years and we have kept everyone of them, and they are all made just like this bull. They are the right size and carry a lot of depth just like this bull does.



Lot 23 **K54** **5/8 SM 3/8 AN**
 BD: 4-26-22 BW:89 205 WW: 705 Ratio: 109
 Blk Homozygous Black Reg: 4133959

TJ ROOSEVELT 366E
 TNT MR TEDDY G396
 TNT MISS C123

S A V BISMARCK 5682
 STE MISS BISMARCK C54
 SLT MISS A441

	CE	BW	WW	YW	MCE	MM	MWW	CW	YG	MB	BF	REA	API	TI
EPD	11.1	1.5	86.6	130.8	8.4	21.1	62.1	33.9	-0.20	0.18	-0.04	0.63	138.3	78.9
%			20	30	30	50	30	35			50	50	45	50

K54 has very similar genetics as lot 22 but is just a bit larger framed then him. His mother also raised a bull in last years sale and one bull prior and also has one heifer in production.



Lot 24 **K139** **PB SM**
 BD: 3-28-22 BW:83 205 WW: 820 Ratio: 126
 Blk Heterozygous Black Reg: 4134226

CCR WIDE RANGE 9005A
 BCLR CASH FLOW C820
 BCLR MISS MONICA U820
 WLE UNO MAS X549
 SLT MISS B139
 GONSIOR YENTYL Y20

	CE	BW	WW	YW	MCE	MM	MWW	CW	YG	MB	BF	REA	API	TI
EPD	12.5	1.2	94.3	139.2	4.8	13.7	61.0	24.2	-0.48	0.20	-0.08	1.16	154.1	89.1
%	30	45	10	15				40	20	40		10	20	15

The 2nd highest wean weight bull in the offering coming in at 820 pounds. There is all kinds of possibilities with this bull as he combines calving ease with performance and also he is a high marbling, high ribeye bull. He is a larger framed bull with lots of length but still has plenty of depth so don't pass this bull up.



Lot 25 **K45** **5/8 SM 3/16 AN 3/16 CS**
 BD: 3-29-22 BW:79 205 WW: 681 Ratio: 95
 Blk Heterozygous Black Reg: 4134245

CCR WIDE RANGE 9005A
 BCLR CASH FLOW C820
 BCLR MISS MONICA U820

SRF OLIE 027X

MISS SLT Z45

545

	CE	BW	WW	YW	MCE	MM	MWW	CW	YG	MB	BF	REA	API	TI
EPD	13.3	-0.1	76.8	119.5	6.2	20.0	59.5	37.9	-0.48	0.10	-0.08	1.25	140.9	79.2
%	40	45	35	40				35	2		15	1	35	45

K45 is out of a coming 11 year old dam that you can always count on to do her job. She has raised 4 sale bulls now and she is also the grand dam to lot 12. This year her Cash Flow calf came small and grew fast. He is long made which also shows on his REA epd being in the top 1%.



Lot 26 **K003** **1/2 SM 1/2 AN**
 BD: 3-25-22 BW:80 205 WW: 692 Ratio: 107
 Blk Homozygous Black Reg: 4133953

BASIN PAYWEIGHT 1682
 TEX PLAYBOOK 5437
 RITA 1C43 OF 9M26 COMPLETE

DJF C593

STE MISS 003H

SLT MISS B061

	CE	BW	WW	YW	MCE	MM	MWW	CW	YG	MB	BF	REA	API	TI
EPD	13.2	0.4	86.6	132.5	10.7	22.6	64.2	41.6	-0.06	0.32	-0.02	0.45	140.9	83.5
%	40		25	25	10	25	20	15		45			40	35

Take a look at this guy he is a nice even made bull from front to back. He has a nice head on him, smooth shoulders, with a big hip. K003 is a bull that you could look at all day. Also check out his maternal traits as you will defiantly want to keep all the females from him.



Lot 27 **K099** **1/2 SM 1/2 AN**
 BD: 3-21-22 BW:77 205 WW: 669 Ratio: 104
 Blk Homozygous Black Reg: 4134093

BASIN PAYWEIGHT 1682
 TEX PLAYBOOK 5437
 RITA 1C43 OF 9M26 COMPLETE

H099
 OVAL F ALL TIME A322
 W999

	CE	BW	WW	YW	MCE	MM	MWW	CW	YG	MB	BF	REA	API	TI
EPD	14.8	-0.6	78.5	117.6	12.1	25.5	63.8	35.2	-0.05	0.28	-0.02	0.38	140.7	79.1
%	25	35	45	50	3	15	25	30					35	45

Heifer Bull Alert. Out of a first calf heifer that we purchased from Binstock Simmentals. She is a moderate framed heifer that calved really easy. The Binstock herd carries a lot of performance so we knew breeding her to Playbook would bring calving ease with out giving up performance.



Lot 28 **K094** **3/8 SM 5/8 AN**
 BD: 3-22-22 BW:79 205 WW: 675 Ratio: 110
 Blk Homozygous Black Reg: 4133923

BASIN PAYWEIGHT 1682
 TEX PLAYBOOK 5437
 RITA 1C43 OF 9M26 COMPLETE

DARADO F48
 STE MISS DARADO H094
 SLT MISS A487

	CE	BW	WW	YW	MCE	MM	MWW	CW	YG	MB	BF	REA	API	TI
EPD	13.2	0.4	81.1	127.0	10.6	22.2	60.9	38.0	-0.03	0.24	-0.01	0.36	125.7	76.9
%	40		35	30	10	20	20	15		50				

Here is a low percentage Simmental bull out of the first set of daughters from Darado, who is the sire to lot 18 and 19. We were really impressed with these daughters and how well they milked. We are really looking forward to see what they will do as they age and get even more of these females into production.



Lot 29 **K805** **3/4 SM 1/4 AN**
 BD: 3-24-22 BW:78 205 WW:702 Ratio: 96
 Blk Homozygous Black Reg: 4133927

HOOK'S BEACON 56B
 KBHR CIMARRON F151
 BAR CK MS X38 106Z

J BAR J NIGHTRIDE 225Z
 LRS MS NIGHTRIDE 805F
 LRS MS TOP TEN 628D

	CE	BW	WW	YW	MCE	MM	MWW	CW	YG	MB	BF	REA	API	TI
EPD	14.1	-1.3	77.7	125.2	9.2	23.9	63.0	44.0	-0.25	0.69	-0.05	0.90	161.9	91.2
%	30	25	45	35	15	50	45	20	45	10	50	20	10	10

I have been waiting for this cow to have a bull calf because I knew he would be good. I purchased this cow from Lassel Ranch Simmentals and I really am impressed with her. I will also be calving a full sister to this bull as well and the way she looked I had to breed the cow the same way to get him. K805 will also work as a heifer but can also do so much more, just study his epds and you will see he is a great all around bull.



Lot 30 **K034** **3/4 SM 1/4 AN**
 BD: 3-23-22 BW:85 205 WW: 697 Ratio: 108
 Blk Homozygous Black Reg: 4134133

HOOK'S YELLOWSTONE 97Y
 KOCH BIG TIMBER 685D
 KOCH MS HOOKS BOY

CCR GRAVITY 9064A
 STE MISS GRAVITY H034
 STE MISS POWER E708

	CE	BW	WW	YW	MCE	MM	MWW	CW	YG	MB	BF	REA	API	TI
EPD	9.6	0.9	90.1	136.7	6.0	20.0	62.9	32.6	-0.20	0.31	-0.04	0.64	150.5	89.3
%			10	15		50	20	35		50		50	25	15

K034 is out of a first calf heifer that did an awesome job raising this calf. We were told to keep all the Gravity daughters and we are sure glad we did. He carries a lot of performance that traces back to Full Power and lot 20's dam.



Lot 31 **K442** **PB SM**
 BD: 4-08-22 BW:99 205 WW: 685 Ratio: 106
 Blk Heterozygous Black Reg: 4134072

MR ISHEE CATALYST
 RBS BOISE B63
 RBS MISS S63
 W/C EXECUTIVE ORDER 8543B
 BRANT DALLAS D442Z
 BRANT RED ROSES Z4442

	CE	BW	WW	YW	MCE	MM	MWW	CW	YG	MB	BF	REA	API	TI
EPD	11.7	1.4	83.9	116.7	8.8	25.4	65.3	22.4	-0.48	0.03	-0.10	0.94	127.2	79.5
%			30	50	25	25	25		20		30	30		

We were able to get a few straws of Boise to try out but only got one bull calf but he is a good one. His dam is an extremely deep made cow and she passed it right onto this bull. He has lots of depth and is wide topped that will make great feeder calves.



Lot 32 **K58** **PB SM**
 BD: 2-09-22 BW:87 205 WW: 642 Ratio: N/A
 Blk Homozygous Black Reg: 4037384

RUBY SWC MADDEN D665
 WBF SUCCESS F153
 WBF JACKIE C643
 CCR WIDE RANGE 9005A
 ROCKIN H MS.FERRARI F33
 ROCKIN H MS.TURNINGPOINT

	CE	BW	WW	YW	MCE	MM	MWW	CW	YG	MB	BF	REA	API	TI
EPD	11.2	1.3	82.6	129.6	3.3	24.6	65.8	31.5	-0.45	0.24	-0.08	1.08	139.0	84.5
%	45	45	35	25		45	35	40	40	30		15	35	25

We purchased this bull with his mother as a pair from Rocking H Simmentals in Minnesota last spring and we are sure glad we did. He is a bit older than the rest of my bulls so he would make a good bull if you are looking for a bull with a little more age to turn him out earlier.





**CHECK OUT THE
VIDEOS OF THE BULLS
ONLINE AT THE
LIVESTOCK LINK'S
WEBSITE.**



Sale day phone numbers:

Ethan Steffan 701-290-0374

Tom Steffan 701-290-2484

Aaron Friedt (Livestock Link) 701-590-9597

Marc Hotchkiss (Livestock Link) 605-210-1956

Katlyn Steffan 701-290-8480

Deanna Steffan 701-290-0951

We encourage anyone unable to attend the sale to come and look at the bulls before sale day. As mentioned prior in the catalog you can bid online on The Livestock Link, or you can call us to place a bid. **If bidding online please remember to make an account and register to bid at least 24 hours before sale time to help make everything easier on the Livestock Link staff and to make sure you can get your bid in on time.** If any questions on this please call us.

Lot 33 **K605** **PB SM**
 BD: 4-04-22 BW:84 205 WW: 757 Ratio: 104
 Red Reg: 4134186

KBHR SNIPER E036
 KBHR EXCALIBUR G227
 KBHR D253

IPU RED ZONE 82Y
 STE MISS RED ZONE D605
 MISS SLT U8698

	CE	BW	WW	YW	MCE	MM	MWW	CW	YG	MB	BF	REA	API	TI
EPD	11.7	0.8	86.0	122.4	7.0	31.5	73.7	32.8	-0.47	0.18	-0.10	0.99	138.5	85.9
%	30	30	30	45	25	10	15	30	20	40	15	25	40	25

The top wean weight red bull, bringing in a lot of performance. This bull will be a standout come sale day. The Excalibur and Red Zone cross will bring lots of growth and also make females that are good milkers.



Lot 34 **K626** **PB SM**
 BD: 4-11-22 BW:83 205 WW: 753 Ratio: 103
 Red Reg: 4134053

KBHR SNIPER E036
 KBHR EXCALIBUR G227
 KBHR D253

KS CORNERBACK B593
 STE MISS CORNERBACK D626
 SLT MISS X098

	CE	BW	WW	YW	MCE	MM	MWW	CW	YG	MB	BF	REA	API	TI
EPD	12.6	0.2	82.5	123.0	7.2	24.0	64.5	34.4	-0.43	0.25	-0.09	0.97	141.4	85.8
%	20	25	30	35	25		40	25	40	25	30	25	30	20

Here is the second highest weaning weight bull for the red bulls and he is continuing to grow well and remain at the top. He is also a full brother to a bull that sold last year to Delvin Dukart. K626 is a long made bull and also stems back to a long cow family with many females being in production that you can find in lots 33 and 36.



Lot 35 **K731** **PB SM**
 BD: 4-16-22 BW:82 205 WW: 720 Ratio: 116
 Red Reg: 4134120

KBHR SNIPER E036
 KBHR EXCALIBUR G227
 KBHR D253

KS CORNERBACK B593
 STE MISS CORNERBACK E731
 SLT MISS X5

	CE	BW	WW	YW	MCE	MM	MWW	CW	YG	MB	BF	REA	API	TI
EPD	12.7	0.7	91.9	133.6	7.7	25.5	71.4	41.3	-0.45	0.20	-0.10	1.07	138.8	89.6
%	25	35	10	20	20	35	15	15	35	35	30	20	35	15

A bull having a 116 wean ratio and a no hole epd profile. He is similar bred as lot 34 both being a grandson of our past red herd sire Cornerback. The Cornerback daughters make awesome mothers and raise big calves. With him being in the top 10% for wean weight epd.



Lot 36 **J606** **PB SM**
 BD: 4-11-22 BW:80 205 WW: 742 Ratio: 102
 Red Reg: 4134134

KBHR SNIPER E036
 KBHR EXCALIBUR G227
 KBHR D253

WS PRIME BEEF Z8
 STE MISS PRIME BEEF D606
 SLT MISS A98

	CE	BW	WW	YW	MCE	MM	MWW	CW	YG	MB	BF	REA	API	TI
EPD	14.5	-1.1	80.2	120.9	7.7	28.6	68.3	32.3	-0.8	0.30	-0.09	1.07	150.4	88.5
%	10	10	45	45	15	25	30	35	20	20	30	15	20	15

Another great Excalibur son. He started at only 80 pounds at birth giving him great calving ease potential, especially when he goes back to Prime Beef. His calves will come small and grow fast.



Lot 37 **K686** **3/4 SM 1/4 AR**
 BD: 4-05-22 BW:83 205 WW: 692 Ratio: 95
 Red Reg: 4134037

KBHR SNIPER E036
 KBHR EXCALIBUR G227
 KBHR D253
 FORSTER ANGUS A081
 STE MISS D686
 STE MISS B138

	CE	BW	WW	YW	MCE	MM	MWW	CW	YG	MB	BF	REA	API	TI
EPD	13.0	-1.1	66.0	101.5	7.1	33.9	67.7	29.5	-0.33	0.29	-0.09	0.81	132.2	74.7
%	40	25			45	10	35		25		25	30	50	

Here is a super thick made bull with great calving ease. Forster Angus A081 was a red angus bull we use to run on our heifers and he was an easy calver that carried that trait onto his offspring.



Lot 38 **K870** **PB**
 BD: 3-30-22 BW:91 205 WW: 643 Ratio: 103
 Red Reg: 4134213

CDI PERSPECTIVE 238A
 CDI PERCEPTION 254E
 CDI MISS POWER GRID 30C
 TNT 90 PROOF Z401
 F870
 C570

	CE	BW	WW	YW	MCE	MM	MWW	CW	YG	MB	BF	REA	API	TI
EPD	11.2	0.3	82.7	127.2	4.5	28.0	68.2	34.9	-0.36	0.15	-0.08	0.85	147.7	83.7
%		35	35	30		25	25	30		45			30	35

A bull coming from a dam we purchased from Binstock Simmentals, that also had a bull in last years sale. The Perception and 90 Proof cross brings some calving ease while keeping lots of maternal traits.



Lot 39 **K911** **PB SM**
 BD: 3-28-22 BW:78 205 WW: 681 Ratio: 94
 Red Reg: 4133945

W/C EXECUTIVE ORDER 8543B
 ASR BIRTHRIGHT
 ASR MS JORDAN D660
 KUNTZ SHERIFF 8A
 STE MISS SHERIFF G911
 STE MISS RED ZONE E710

	CE	BW	WW	YW	MCE	MM	MWW	CW	YG	MB	BF	REA	API	TI
EPD	14.9	-0.8	66.3	97.1	8.2	29.5	63.2	22.0	-0.38	0.07	-0.08	0.73	129.6	73.2
%	10	15			15	25								

Heifer Bull. This bull has calving ease, both on the sire side and the dams side. We knew breeding Birthright to a Sheriff daughter would bring us a low birth weight bull, that would also keep a darker color of red to the Birthright offspring.



Lot 40 **K639** **3/8 SM 1/2 AR 1/8 CS**
 BD: 3-28-22 BW:80 205 WW: 627 Ratio: 101
 Red Blaze Reg: 4134085

HXC CONQUEST 4405P
 SLT COWBOY C100
 TNT MISS T100
 FORSTER ANGUS A081
 STE MISS D639
 SLT MISS B549

	CE	BW	WW	YW	MCE	MM	MWW	CW	YG	MB	BF	REA	API	TI
EPD	11.0	-0.3	59.9	90.1	4.8	26.5	56.5	11.0	-0.24	0.17	-0.07	0.46	124.7	65.5
%		40				20			50		50			

The only Cowboy son in the sale and he is a baldy. He has a lower birth weight than most Cowboy sons, getting that from his mother. He is a moderate framed bull, that is wide topped with a nice hip.



All-Purpose Index (API): Dollars per cow exposed under an all-purpose-sire scenario. (See below for more details.)

Back Fat (BF): Inches of back fat.

Birth Weight (BW): Pounds of birth weight.

Calving Ease (CE): Percent of unassisted births when used on heifers.

Carcass Weight (CW): Pounds of carcass weight.

Maternal Calving Ease (MCE): Percent of unassisted births in first-calving daughters.

Milk (MLK): Pounds of weaning weight due to milk.

Marbling (MRB): Marbling score.

Maternal Weaning Weight (MWW): Pounds of weaning weight due to milk and growth.

Ribeye Area (REA): Square inches of ribeye.

Terminal Index (TI): Dollars per cow exposed under a terminal-sire scenario. (See below for more details.)

Weaning Weight (WW): Pounds of weaning weight.

Yearling Weight (YW): Pounds of yearling weight.

Yield Grade (YG): Yield grade score.

\$ Indexes: Though EPDs allow for the comparison of genetic levels for many economically important traits, they only provide a piece of the economic puzzle. That's where \$ indexes come in. Through well conceived, rigorous mathematical computation, \$ indexes blend EPDs and economics to estimate an animal's overall impact on your bottom line. The same technology that led to the dramatic progress in swine, poultry and dairy genetics over the last several decades was used to develop the following \$ indexes:

All-Purpose Index (API): Evaluates sires for use on the entire cow herd (bred to both Angus first-calf heifers and mature cows) with the portion of their daughters required to maintain herd size retained and the remaining heifers and steers put on feed and sold grade and yield.

Terminal Index (TI): Evaluates sire for use on mature Angus cows with all offspring put on feed and sold grade and yield.

Using API and TI: First, determine which index to use; if you're keeping replacements use API, if not, TI. Then, just as with EPDs, zero in on the unit difference between bulls. (As described above, index units are in dollars per cow exposed.) The difference can be used to determine how much a bull is worth compared to another. Or, put another way, how much you can pay for one bull compared to another. For example, when buying an all-purpose-type sire, you can quickly figure a bull scoring +100 for API is worth an extra \$6,000 over a +50 bull if both are exposed to 30 cows over 4 years ($\$50 \text{ diff.} \times 30 \text{ hd.} \times 4 \text{ yr.} = \$6,000$). A percentile-ranking chart is required to determine where a bull's index value ranks him relative to other bulls in the breed. For percentile rankings or more detailed information about EPDs and \$ indexes visit www.simmental.org.

SLT Fencing Supplies



Stop and see Tom Steffan on pricing of fencing and livestock equipment.





24' Free Standing Windbreak Panels
24' Free Standing Panels
Free Standing Panels with Hinges for 8'-16' Gate



Heavy Steel Post (1.33)
Treated Wood Post
Railroad Ties
Rough 2x8x16 Planks
Barb and Barbless Wire
H&W Gates



Steffan Simmentals
11089 10th St SW
Killdeer, North Dakota 58640