

71 years of raising cattle with today's cattleman in mind

STROH HEREFORD RANCH

32nd Annual Ranch-Ready Production Sale

THURSDAY, FEBRUARY 3, 2022

1:00 p.m. (MT) • At the Ranch

Selling: 33 Coming Two-Year-Old Bulls

10 Commercial Bred Hereford Heifers • 20 F1 Baldy Yearling Heifers



Dear Cattlemen and Women:

We would like to use this as a formal invitation to our 32nd Annual Ranch-Ready Production Sale! First and foremost, our family would like to thank you, our friends and customers for making this possible! I think we can all agree 2021 was a benchmark year for everyone. It was a record warm and dry winter followed by an even hotter dryer summer.

We here at Stroh Hereford Ranch used a year that rivaled most Dust Bowl years (1936 was the year the meteorologists referred to) to identify cattle that just didn't make the cut. On one hot and windy afternoon, we picked apart the potential sale bulls and this is what the offering was whittled down to; a set of easy fleshing bulls with athleticism and durability. As always the bulls were developed on a low energy, high forage diet in the months after weaning. Then they were turned out on the North Dakota prairie and cake broke. This year the sale bulls were fed a TMR which consisted of Chopped Hay, Corn Silage, and Steffan Feeds Grain mix. The bulls were stepped into the ration we felt best showed off their ability to gain while maintaining their gut and foot health. We would like to stress as always we develop breeding bulls not show or butcher ready bulls. We feel this helps meet your needs and insures profitability.

Our vaccination program is as follows: at birth we give our calves C and D Toxoid. At branding the calves are given Nasalgen 3, 7-way, Vista Once, and they are dewormed. In the fall before weaning, the calves are preconditioned with 7-way with Somnus, and Vista Once. When we wean, the calves get ResVac 5 and we pour them. Our cows are vaccinated before we turn them out for breeding with PregGuard Gold 10 in the spring. This year's sale bulls were poured in December.

Due to drought conditions we had to cull deep into our cow herd. At our house dad is the pessimist and mom is the optimist. Because of this, we will only be offering 10 commercial Hereford heifers. Mom being optimistic thinks "next year" will be better and we are keeping a larger than usual number of heifers to "rebuild". Keep in mind that mom went back to work a few years ago, and it will be up to dad and I to calve them out!

Dad has decided at the last minute to put 20 F1 Baldy Heifers into the sale. We have not done this in a few years. These are true F1 Baldy heifers. They are sired by Opp Angus Bulls which are crossed with our commercial Hereford cows. These F1 Baldy heifers are exemplary commercial females with the genetics hardwired for consistency, predictability and profitability wrapped into a package that offers superior heterosis. Due to drought conditions and a feed shortage, these F1 Baldy Heifers were sent to Heim Cattle Company in Bismarck, North Dakota to be fed until just before the sale.

Bulls and females will be on display the afternoon of February second and the morning of the third. As always the coffee is on, our phones are charged up, and we look forward to visiting and seeing everyone as the sale date draws closer. Do not hesitate to call us with any questions. We welcome you to stop by the ranch before sale day and view this year's offering.

~ *The Stroh Family*

Mike, Dawn, Lucas and Matthew Stroh

1010 Highway 22 South, Killdeer, ND 58640
701-573-4373 (home phone)
701-290-1191 (Mike's Cell)
701-690-4860 (Matt's Cell)
acmecatl@ndsupernet.com
strohherefordranch.com



Matt, Dawn, Mike and Lucas Stroh

Like us on: Follow us on:



71 years of raising cattle with today's cattleman in mind

STROH HEREFORD RANCH

32nd Annual Ranch-Ready Production Sale
THURSDAY, FEBRUARY 3, 2022

1:00 p.m. (MT) • At the Ranch

1.5 miles east of the Killdeer Roundabout on Highway 200 or 5 miles west of Dunn Center, ND.

Join us for a free lunch

SELLING: 33 Coming Two-Year-Old Bulls *(A two-year-old bull has more longevity and can cover more cows than a yearling bull. These bulls are cake broke and ready to go to work for you.)*

10 Commercial Bred Hereford Heifers *(Bred to Black Angus bulls)*

20 F1 Baldy Yearling Heifers

AUCTIONEER:

Scott Weishaar,
..... 701-872-5299 • Cell: 701-426-6826

SALES REPRESENTATIVES:

Jill Hotchkiss,
Hereford America..... 605-490-1409
Marc Hotchkiss,
The Livestock Link 605-210-1956
Kevin Murnin,
American Hereford Association 406-853-4638
Tony Heins,
Cattle Business Weekly 701-400-4435
Rowdy Benson..... 605-569-1493

Videos online at: www.thelivestocklink.com

The **Livestock**
Link

EPDs are current as of 12/27/21

TERMS & CONDITIONS: All cattle will be sold to the highest bidder without reserve. The terms of the sale will be cash. The auctioneer will settle any dispute as to bids.

Each animal will become the property of the buyer as soon as sold. Cattle will be cared for a reasonable length of time after the sale, at the buyer's risk. Announced changes in catalog information sale day, take precedence over printed material in this catalog. Everyone attending this sale does so at his own responsibility and risk, and without liability on the part of the owner or his employees.

GUARANTEE: All bulls of breeding age are guaranteed breeders. If an animal fails to breed after a trial of six months, it may be returned to the seller at buyer's expense. The seller reserves the right to try said animal for six months and if it proves a breeder to return it to the station of buyer at seller's expense. If the animal proves to be a non-breeder it will be replaced with an animal of equal quality or credit will be given for next years sale.

We assume no liability legal or otherwise to make any further compensation to the buyer no other warranty of any nature is expressed or implied.

Extreme care has been taken in copying each pedigree to avoid errors. We are not to be held responsible for any error which might appear and which is beyond our control in the printing of the catalog.

DELIVERY: Deliveries will be made on purchase of \$3500 or more to central points up to 400 miles. We will cooperate with buyers on delivery of all cattle regardless of number or distance. No delivery provided for heifers.

ABSENTEE BIDDING: Anybody wishing to bid that cannot attend the sale may place a phone bid by contacting any listed sales representative, (Will Bollum, Tony Heins, Kevin Murnin and Jill Hotchkiss), Mike Stroh, Matt Stroh or Scott Weishaar.

KILLDEER ACCOMMODATIONS: Cobblestone Hotel & Suites, 701-764-2200; Mountain View Hotel, 701-764-5845.

We will cooperate with delivery arrangements or take \$50.00 (per bull) off if picked up on sale day (Bulls Only)

Bid Online! *The* **Livestock** Link

If you are unable to attend the sale, you can register to watch or bid online through The Livestock Link by following these instructions:

Livestock Videoing • Video Sales
• Bid-by-Click Online Sales

To view events go to: www.TheLivestockLink.com

- Visit our website, www.thelivestocklink.com.
- Click the "Auctions" tab.
- Click on "Click Here to Register."
- Enter your e-mail address and password, and fill out all your contact information.
- Fill out your banking information. *If you are only viewing the sale and do not wish to bid, this information can be left blank.*
- Check the checkbox at the bottom of the page that says "I'm not a robot" to prove you are a real person.
- Click "Register" at the bottom of the page.
- You will receive an e-mail with a link to activate your account.
- **Please register to bid at least 24 hours in advance of the sale.**

You will receive an e-mail when you are approved for bidding. All applications will be reviewed and processed promptly. You will receive a bidder number only after you have made a purchase in the sale, and that number will only be used at that sale. When the sale is completed, please contact the sale owner or manager for instructions of payment and delivery of your purchase.

To use our service, you must have access to high speed internet.

Questions or need help?

→ **Contact Aaron Friedt at (701) 590-9597 or Support at (605) 920-9261** ←

www.TheLivestockLink.com

Visit HerefordAdvantage.com to get started today!

HEREFORD ADVANTAGE



An industry-changing program from the American Hereford Association and IMI Global to verify and add value to Hereford-influenced feeder cattle with superior genetics, health and management.

REQUIREMENTS

- **Source & Age verification**
- **Genetic merit**
 - Minimum of 50% Hereford genetics
 - Bull battery ranking in top 50% of breed for \$CHB index (bull battery average)
 - Bull ownership transferred (all bulls)
- **Vaccination program – two rounds of vaccinations pre-weaning (minimum)**
 - Recommended *minimum* protocol:

PrimeVAC 34
PREMIUM
BY MERCK ANIMAL HEALTH

- **BQA certification**

American Hereford Association | (816) 842-3757 | 11500 NW Ambassador Drive, Suite 410, Kansas City, MO 64153 | HerefordAdvantage.com

BENEFITS

- **Genetic improvement tool**
 - Sire EPD and profit index summary
- **Added market exposure**
 - Free listing at HerefordMarketplace.com
- **Enrollment cost - \$3.00/hd. (verification + eID tag)**



Look for this logo in Hereford bull sale catalogs to identify sires meeting the genetic requirements for the Hereford Advantage program.

TRAIT DEFINITIONS

The American Hereford Association (AHA) currently produces expected progeny differences (EPDs) for 17 traits and calculates three profit (\$) indexes.

CALVING EASE DIRECT (CED) – CE EPD is based on calving ease scores and birth weights and is measured on a percentage. CE EPD indicates the influence of the sire on calving ease in females calving at 2 years of age. For example, if sire A has a CE EPD of 6 and sire B has a CE EPD of -2, then you would expect on average if comparably mated, sire A's calves would be born with an 8% more likely chance of being unassisted when compared to sire B's calves.

BIRTH WEIGHT (BW) – BW EPD is an indicator trait for calving ease and is measured in pounds. For example, if sire A has a BW EPD of 3.6 and sire B has a BW EPD of 0.6, then you would expect on average if comparably mated, sire A's calves would come 3 lb. heavier at birth when compared to sire B's calves. Larger BW EPDs usually, but not always, indicate more calving difficulty. The figure in parentheses found after each EPD is an accuracy value or reliability of the EPD.

WEANING WEIGHT (WW) – WW EPD is an estimate of pre-weaning growth that is measured in pounds. For example, if sire A has a WW EPD of 60 and sire B has a WW EPD of 40, then you would expect on average if comparably mated, sire A's calves would weigh 20 lb. heavier at weaning when compared to sire B's calves.

YEARLING WEIGHT (YW) – YW EPD is an estimate of post-weaning growth that is measured in pounds. For example, if sire A has a YW EPD of 100 and sire B has a YW EPD of 70, then you would expect on average if comparably mated, sire A's calves would weigh 30 lb. heavier at a year of age when compared to sire B's calves.

DRY MATTER INTAKE (DMI) – The Dry Matter Intake EPD predicts the daily consumption of pounds of feed. For example, if sire A has a DMI EPD of 1.1 and sire B has a DMI EPD of 0.1, you would expect sire B's progeny, if comparably mated, to consume on average 1 pound of feed less per day.

SCROTAL CIRCUMFERENCE (SC) – Measured in centimeters and adjusted to 365 days of age, SC EPD is the best estimate of fertility. It is related to the bull's own semen quantity and quality, and is also associated with age at puberty of sons and daughters. Larger SC EPDs suggest younger age at puberty. Yearling sons of a sire with a .7 SC EPD should have yearling scrotal circumference measurements that average 0.7 centimeters (cm) larger than progeny by a bull with an EPD of 0.0 cm. In the Hereford genetic analysis, a multiple-trait model was used for scrotal circumference. Weaning weight was used as a predictor variable to increase the prediction accuracy of SC EPDs. Therefore, an animal with a weaning weight EPD should also have a SC EPD.

SUSTAINED COW FERTILITY (SCF) – The AHA's new Sustained Cow Fertility EPD (SCF) is a prediction of a cow's ability to continue to calve from three years of age through twelve years of age, given she calved as a two-year-old. The EPD is expressed as a deviation in the proportion of the ten-possible calving's to twelve years old expressed as a probability. For example, the daughters of a bull with a 30 EPD would have the genetic potential to have one more calf by age twelve than the daughters from a bull with a 20 EPD. In other words, the daughters from the 30 EPD bull would have a 10% greater probability of having one more calf than the bull with a 20 EPD. This is equivalent to saying that the daughters are 10% more likely to remain in the herd to age 12.

MATERNAL MILK (Milk) – The milking ability of a sire's daughters is expressed in pounds of calf weaned. It predicts the difference in average weaning weights of sires' daughters' progeny due to milking ability. Daughters of the sire with a +14 MM EPD should produce progeny with 205-day weights averaging 24 lb. more (as a result of greater milk production) than daughters of a bull with a MM EPD of -10 lb. (14 minus -10.0 = 24 lb.). This difference in weaning weight is due to total milk production during the entire lactation.

MATERNAL MILK & GROWTH (M&G) – Maternal Milk & Growth reflects what the sire is expected to transmit to his daughters for a combination of growth genetics through weaning and genetics for milking ability. It is an estimate of daughters' progeny weaning weight. A bull with a 29 lb. M&G EPD should sire daughters with progeny weaning weights averaging 19 lb. heavier than progeny of a bull's daughters with a M&G EPD of 10 lb. (29 minus 10 = 19 lb.). It is equal to one-half the sire's weaning weight EPD, plus all of his MM EPD. No accuracy is associated with this since it is simply a mathematical combination of two other EPDs. It is sometimes referred to as "total maternal" or "combined maternal."

MATERNAL CALVING EASE (MCE) – MCE EPD predicts how easily a sire's daughters will calve at 2 years of age and is measured on a percentage. For example, if sire A has a MCE EPD of 7 and sire B has a CE EPD of -3, then you would expect on average if comparably mated, sire A's daughters would calve with a 10% more likely chance of being unassisted when compared to sire B's daughters.

MATURE COW WEIGHT (MCW) – The MCW EPD was designed to help breeders select sires that will either increase or decrease mature size of cows in the herd. The trait was developed after years of cow weight data collection and the EPD relates directly to the maintenance requirements of a cow herd. An example of how the MCW EPD allows breeders to compare sires: If sire A has a MCW EPD of 100 and sire B has an EPD of 85, then you would expect the females of sire A, if mated to similar cows, to be 15 lb. heavier at mature size.

UDDER SUSPENSION (UDDR) – Scores range from 9 (very tight) to 1 (very pendulous) and represent assessments of udder support. Weak udder suspension results in pendulous udders that make it difficult for a calf to nurse. Weak suspension in the udder indicates a lack of support in the ligament that ties the udder to the cow's body wall. Over time, weakness in this ligament will allow the udder to hang down too far from the body and may subject the udder to serious problems and increased potential for injury. UDDR EPDs are reported on the scoring scale. Differences in sire EPDs predict the difference expected in the sires' daughters' udder characteristics when managed in the same environment. For example, if sire A has a UDDR EPD of 0.4, and sire B has a UDDR EPD of -0.1, the difference in the values is 0.5, or one-half of a score. If daughters of sires A and B are raised and managed in the same environment, you would expect half a score better udder suspension in daughters of sire A, compared to sire B.

TEAT SIZE (TEAT) – Scores range from 9 (very small) to 1 (very large, balloon shaped) and are subjective assessments of the teat length and circumference. Oversized

teats are difficult for newborn calves to nurse, and the calf may not receive adequate colostrum. This could lead to a higher incidence of scours or decreased immunity levels in the newborn calf. TEAT EPDs are reported on the scoring scale. Differences in sire EPDs predict the difference expected in the sires' daughters' udder characteristics when managed in the same environment. For example, if sire A has a teat size EPD of 0.4, and sire B has a teat size EPD of -0.1, the difference in the values is 0.5, or one-half of a score. If daughters of sires A and B are raised and managed in the same environment, you would expect half a score smaller teat size in daughters of sire A, compared to sire B.

CARCASS WEIGHT (CW) – Carcass weight is a beneficial trait when considering the impact that pounds have relative to end product value. At the same age constant endpoint, sires with higher values for carcass weight will add more pounds of hot carcass weight compared to sires with lower values for carcass weight. For example, if sire A has a CW EPD of 84 and sire B has a CW EPD 64, then you would expect the progeny of sire A, if harvested at the same age constant endpoint, to have a 20-lb. advantage in terms of hot carcass weight.

RIB FAT (FAT) – The FAT EPD reflects differences in adjusted 365-day, 12th-rib fat thickness based on carcass measurements of harvested cattle. Sires with low, or negative FAT EPDs are expected to produce leaner progeny than sires with higher EPDs. Ultrasound measures are also incorporated into this trait and have been shown to be highly correlated with the performance of slaughter progeny. All data is expressed on a carcass scale.

RIBEYE AREA (REA) – REA EPDs reflect differences in an adjusted 365-day ribeye area measurement based on carcass measurements of harvested cattle. Sires with relatively higher REA EPDs are expected to produce better-musclered and higher percentage yielding slaughter progeny than will sires with lower REA EPDs. Ultrasound measurements are also incorporated into this trait and have been shown to be highly correlated with the performance of slaughter progeny. All data is expressed on a carcass scale.

MARBLING (MRB) – MARB EPDs reflect differences in an adjusted 365-day marbling score (intramuscular fat, IMF) based on carcass measurements of harvested cattle. Breeding cattle with higher MARB EPDs should produce slaughter progeny with a higher degree of IMF and therefore higher quality grades. Ultrasound measurements are also incorporated into this trait and have been shown to be highly correlated with the performance of slaughter progeny. All data is expressed on a carcass scale.

BALDY MATERNAL INDEX (BMI\$) – The Baldy Maternal Index is a maternally focused index that is based on a production system that uses Hereford x Angus cross cows. Progeny of these cows are directed towards Certified Hereford Beef. This index has significant weight on Sustained Cow Fertility, which predicts fertility and longevity of females. There is a slightly positive weight on Weaning Weight, Mature Cow Weight and Milk which accounts for enough growth but ensures females do not increase inputs. There is some negative emphasis on Dry Matter Intake, but a positive weighting on Carcass Weight which is anticipated to provide profitability from finishing of non-replacement females and castrated males. Marbling and Rib-eye Area are also positively weighted to keep the harvested progeny successful for CHB. This index is geared to identify Hereford bulls that will be profitable when used in a rotational cross with mature commercial Angus cows.

BRAHMAN INFLUENCE INDEX (BI\$) – The Brahman Influence Index is a maternally focused index that is based on a production system that uses Brahman x Hereford cross cows. Progeny of these cows are directed towards a commodity beef market since Certified Hereford Beef does not accept Brahman influenced cattle. This index has significant weight on Sustained Cow Fertility, which predicts fertility and longevity of females. There is a slightly positive weight on Weaning Weight, Mature Cow Weight and Milk which accounts for enough growth but ensures females do not increase inputs. There is some negative emphasis on Dry Matter Intake, but a positive weighting on Carcass Weight which is anticipated to provide profitability in finishing non-replacement females and castrated males. Marbling and Rib-eye Area are also positively weighted to keep harvested progeny successful for a variety of commodity based programs. This index targets producers that use Hereford bulls on Brahman influenced cows.

CERTIFIED HEREFORD BEEF INDEX (CHB\$) – The Certified Hereford Beef Index is a terminal sire index that is built on a production system where Hereford bulls are mated to mature commercial Angus cows and all progeny will be targeted for Certified Hereford Beef after the finishing phase. This index has significant weight on Carcass Weight to ensure profit on the rail. As well there is a positive weighting for Average Daily Gain along with a negative weighting on Dry Matter Intake to ensure efficient pounds of growth in the finishing phase. Keep in mind, this production system takes advantage of complimentary breeding with the commercial Angus cow. Although Marbling is weighted positively in this index, a positive weighting for Rib-eye Area and a negative weighting for Back Fat are a greater priority in this index to allow for optimum end-product merit. This is the only index that has no emphasis on fertility. Remember that no replacement heifers are being retained.

THE CHB SIRE OF DISTINCTION

The Certified Hereford Beef Sire of Distinction program recognizes Hereford bulls who excel in carcass traits. The American Hereford Association Board of Directors initiated the program in 2007 to recognize superior carcass bulls.

Qualifications - To qualify as a Certified Hereford Beef Sire of Distinction, a bull must be in the top 25% for the CHB\$ profit index and have a minimum accuracy level of 30% for both ribeye area (REA) and marbling (MRB) expected progeny difference (EPD). The Certified Hereford Beef Sires distinction is used to recognize sires in the Hereford breed that excel in improving carcass traits. A bull receiving the CHBS status will be recognized with CHB after his name when doing an animal or EPD inquiry on Hereford.org.

EPD'S FOR 2021 BORN CALVES

CED	BW	WW	YW	DMI	SC	SCF	Milk	M&G	MCE
2.6	2.8	53	86	0.2	1.0	16.5	25	52	1.8
MCW	UDDR	TEAT	CW	FAT	REA	MRB	BMI\$	BI\$	CHB\$
90	1.23	1.24	67	.015	.40	.11	352	422	113

• HERD BULLS •



SIRE **BCC L1 DOMINO 489B**

A	REG#	DOB	
	43511205	3/9/14	

HH ADVANCE 0207X..... HH ADVANCE 8203U ET
 KC L1 DOMINO 12050 HH MISS ADVANCE 7066T
 KC MISS RIBSTONE 09040..... F 157K RIBSTONE 765
 KC L1 DOMETT 06100
 UPS DOMINO 5216..... UPS DOMINO 3027
 UPS MISS MOM 2756
 BCC L1 DOMINETTE 129Y KB L1 DOMINO 116
 BCC L1 PRINCESS 549 BCC MEDORA 043

CED	BW	WW	YW	Milk	M&G	FAT	REA	MRB	BMI\$	CHB\$
6.5	1.9	46	76	33	56	.033	.28	.18	416	114

This bull combines calving ease with performance. Owned with Baumgarten Cattle Company, Belfield, ND.



Casey St. Blanc

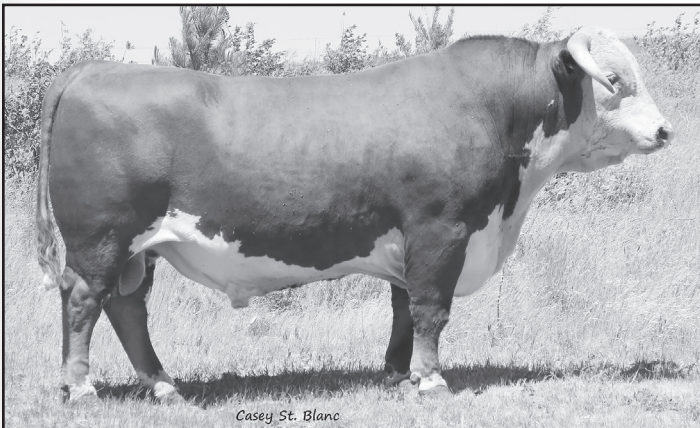
SIRE **CL 1 DOMINO 3146A**

B	REG#	DOB	
	43379774	2/4/13	

HH ADVANCE 8050U ET..... L1 DOMINO 0357I
 HH ADVANCE 1087Y ET HH MISS ADVANCE 365N
 HH MISS ADVANCE 6109S CL 1 DOMINO 373N
 HH MISS ADVANCE 4049P
 CL 1 DOMINO 206M
 HH MISS ADVANCE 153L
 CL 1 DOMINO 824H
 CL 1 DOMINETTE 475P..... CL 1 DOMINETTE 200M

CED	BW	WW	YW	Milk	M&G	FAT	REA	MRB	BMI\$	CHB\$
4.6	3.4	74	106	29	67	.043	.44	.11	338	114

Here is a large outlined, heavily muscled, deep sided Cooper bull. 3146A injects performance, muscle and maternal into a calf crop. As this comment is being written 3146A is in the top 10% of the breed for weaning, yearling, milk & growth and carcass weight. Well maintaining the rest of his maternal figures to be in the top 30% of the breed.



Casey St. Blanc

SIRE **CL 1 DOMINO 432B**

C	REG#	DOB	
	43470017	1/6/14	

CL 1 DOMINO 9122W 1ET..... CL 1 DOMINO 732T
 CL 1 DOMINO 215Z CL 1 DOMINETTE 475P
 CL 1 DOMINETTE 055X..... CL 1 DOMINO 860U
 CL 1 DOMINETTE 7136T 1ET
 HH ADVANCE 9016W ET..... HH ADVANCE 5061R ET
 CL 1 DOMINETTE 1152Y HH MISS ADVANCE 4016P ET
 CL 1 DOMINO 590R
 CL 1 DOMINETTE 717T..... CL 1 DOMINETTE 5134R

CED	BW	WW	YW	Milk	M&G	FAT	REA	MRB	BMI\$	CHB\$
0.5	2.7	64	100	29	61	.063	.28	.11	355	121

This calm dispositioned Cooper bull excels in the areas we believe to be beneficial to the modern beef producer. 432B stamps every calf the same while injecting a number of traits to be beneficial to a cow/calf operation. He is in the top 20% of the breed in the performance categories while maintaining a maternal advantage which is second to none being in the top 10% of the breed for milk and milk & growth. He has recently been recognized as a Certified Hereford Beef Sire of Distinction through the American Hereford Association.



SIRE **H5 10Y HOMETOWN 6194**

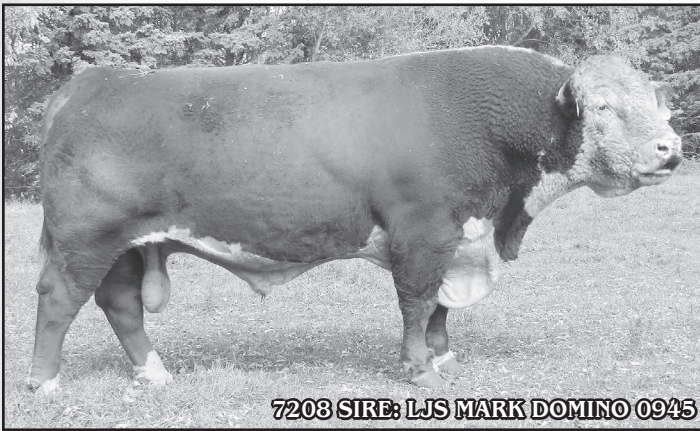
D	REG#	DOB	
	43713062	2/16/16	

SHF WONDER M326 W18 ET..... KCF BENNETT 3008 M326
 NJW 73S W18 HOMETOWN 10Y ET SHF GOVERNESS 256G L37
 PW VICTOR BOOMER P606
 NJW 94J DEW 72N
 HH ADVANCE 5104R
 HH MISS ADVANCE 5020R ET
 H5 MS 7056 ADVANCE 1281 CL 1 DOMINO 486P
 H5 MS 486 DOMET 627..... H5 MS 767 ADVANCE 415

CED	BW	WW	YW	Milk	M&G	FAT	REA	MRB	BMI\$	CHB\$
6.7	1.7	57	92	24	53	.013	.28	.08	350	109

We are very excited to bring this bull into our program. He brings a lot of length, width and muscling to the table! This guy is a true power house phenotypically and genotypically especially when you take a look at the maternal figures 53 on milk & growth and 24 on milk! We look forward to the impact he will have on our program in the years to come. 6194 has tested free of all genetic defects including Mandibulofacial Dysostosis this was verified through genetic testing in conjunction with the AHA for breed improvement.

• HERD BULLS •



SIRE
E

H5 0945 DOMINO 7208 ET

REG#	DOB
43792634	2/23/17

AHA
GE EPD

LJS MARK DOMINO 0709..... OXH MARK DOMINO 0125
 LJS MARK DOMINO 0945 LJS MS MARK DOMINO 0414
 LJS MS ADVANCE 0601 HH ADVANCE 255M 1ET
 LJS MS MARK DOMINO 0344
 CJH HARLAND 408..... HH ADVANCE 9005J
 H5 MS 408 DOMET 764 CJH L1 DOMINETTE 0064
 H5 MS GP DOMET 4118..... C GAME PLAN 2040
 H5 MS 500 DOMET 8182

CED	BW	WW	YW	Milk	M&G	FAT	REA	MRB	BMI\$	CHB\$
4.7	3.9	59	93	28	57	.013	.55	.10	207	135

A balanced bull that moderates frame. Owned with Harrell Hereford Ranch, Baker City, OR. 7208 is a CHB Sire of Distinction.



SIRE
F

SR SCOPE 117E

REG#	DOB
43826523	3/4/17

AHA
GE EPD

CL 1 DOMINO 860U..... CL 1 DOMINO 637S 1ET
 CL 1 DOMINO 0130X 1ET CL 1 DOMINETTE 5142R
 CL 1 DOMINETTE 440P 1ET..... CL 1 DOMINO 9126J 1ET
 CL 1 DOMINETTE 974J
 BRC FACTOR Y19 F 157K RIBSTONE 763
 SR BENITA 464B BRC MISS KAHLUA 205
 SR DOODLES 842 CHURCHILL YANKEE ET
 MLM 5196 LADY 805E

CED	BW	WW	YW	Milk	M&G	FAT	REA	MRB	BMI\$	CHB\$
2.7	4.9	62	110	37	68	.033	.53	.17	338	136

High performing phenotypic bull. Owned with Stuber Hereford Ranch, Bowman, ND.



SIRE
G

CL 1 DOMINO 878F

REG#	DOB
43903454	1/9/18

AHA
GE EPD

CL 1 DOMINO 3100A 1ET..... L1 DOMINO 08542
 CL 1 DOMINO 5110C CL 1 DOMINETTE 812U 1ET
 CL 1 DOMINETTE 055X..... CL 1 DOMINO 860U
 CL 1 DOMINETTE 7136T 1ET
 CL 1 DOMINO 386A 1ET..... CL 1 DOMINO 1108Y 1ET
 CL 1 DOMINETTE 528C CL 1 DOMINETTE 440P 1ET
 CL 1 DOMINETTE 120Y..... GB L1 DOMINO 175E
 CL 1 DOMINETTE 916W

CED	BW	WW	YW	Milk	M&G	FAT	REA	MRB	BMI\$	CHB\$
1.5	3.5	61	95	37	68	.043	.22	.24	407	129

We have used 878 successfully on heifers the past three years. Offspring tend to be soft sided, easy doing cattle. Co-owned with Cooper Herefords Willow Creek, MT.



SIRE
H

SHR L1 DOMINO B 7176

REG#	DOB
43819807	4/22/17

AHA
GE EPD

KC L1 DOMINO 12050..... HH ADVANCE 0207X
 BCC L1 DOMINO 489B KC MISS RIBSTONE 09040
 BCC L1 DOMINETTE 129Y..... UPS DOMINO 5216
 CHURCHILL CAPTAIN 2128Z ET..... BCC L1 PRINCESS 549
 MS CAPTAIN 420 CHURCHILL SENSATION 028X
 MISS BONANZA 722 CHURCHILL LADY 9123W ET
 SH MISS DOMINO 840

CED	BW	WW	YW	Milk	M&G	FAT	REA	MRB	BMI\$	CHB\$
2.1	3.1	43	75	26	48	.033	.15	.21	397	107

A really good 489B son! 7176 is out of a Captain daughter.

• JUNIOR HERD BULLS •



SIRE I KB L1 DOMINO 952G ET

REG#	DOB
44013079	2/16/19

HH ADVANCE 4101B.....
 HH ADVANCE 6092D ET
 MONTANA MISS 753T

CL 1 DOMINO 215Z.....
 MONTANA MISS 647D 1ET
 CL 1 DOMINETTE 617S.....

HH ADVANCE 221 ET
 HH MISS ADVANCE 1056Y ET
 CL 1 DOMINO 592R 1ET
 MONTANA MISS 306
 CL 1 DOMINO 9122W 1ET
 CL 1 DOMINETTE 055X
 HH ADVANCE 3113N 1ET
 CL 1 DOMINETTE 4180P

CED	BW	WW	YW	Milk	M&G	FAT	REA	MRB	BMI\$	CHB\$
2.8	2.8	59	91	29	59	.043	.52	.15	371	123

952 is a maternal bull with high performance records and tremendous stretch from end to end. He is red all over, with depth and style. Owned with Baker Hereford Ranch, Rapid City, SD.

SIRE J CL 1 DOMINO 079H

REG#	DOB
44139106	1/10/20



HH ADVANCE 5044C ET.....
 CL 1 DOMINO 7131E 1ET
 CL 1 DOMINETTE 3175A.....

CL 1 DOMINO 955W.....
 CL 1 DOMINETTE 1183Y ET
 CL 1 DOMINETTE 440P 1ET.....

CL 1 DOMINO 215Z
 HH MISS ADVANCE 1072Y ET
 CL 1 DOMINO 1161Y
 CL 1 DOMINETTE 1123Y 1ET
 CL 1 DOMINO 637S 1ET
 CL 1 DOMINETTE 5152R
 CL 1 DOMINO 9126J 1ET
 CL 1 DOMINETTE 974J

CED	BW	WW	YW	Milk	M&G	FAT	REA	MRB	BMI\$	CHB\$
0.7	3.1	69	110	32	66	.053	.69	.06	395	132

Here is a bull we are genuinely excited to have in our program. 079 was our selection from the 2021 Cooper Hereford sale. 079 brings phenomenal depth, rib curvature and thickness to the table along with being backed up by some of the most prolific females the Hereford breed has seen! 079 also brings tremendous performance, maternal and value added traits to the table. We look forward to seeing the impact 079 has on not only our program but our customers. Co-owned with Cooper Herefords, Willow Creek, MT.



SIRE K JH ADVANCE 0227H

REG#	DOB
44140972	1/27/20



CL 1 DOMINO 420B 1ET.....
 HH ADVANCE 7088E
 HH MISS ADVANCE 4021B

CL 1 DOMINO 2160Z 1ET.....
 JH L1 DOMINETTE 5141C
 JH MISS ADVANCE 1132Y

CL 1 DOMINO 215Z
 CL 1 DOMINETTE 7157T
 HH ADVANCE 0132X
 HH MISS ADVANCE 2178Z
 CL 1 DOMINO 0145X 1ET
 CL 1 DOMINETTE 5131R
 HH ADVANCE 9189W ET
 JH MISS ADVANCE 8052

CED	BW	WW	YW	Milk	M&G	FAT	REA	MRB	BMI\$	CHB\$
1.7	2.5	60	89	31	61	.063	.40	.27	470	127

A tremendous 7088 son co-owned with Johansen Herefords in Castle Dale, Utah. He expresses phenomenal length, depth and thickness. He moves around with tremendous athleticism. First calves to be born this spring.

SIRE L JH L1 DOMINO 0246H

REG#	DOB
44141372	2/4/20



CL 1 DOMINO 1131Y 1ET.....
 HH ADVANCE 5011C ET
 HH MISS ADVANCE 1274Y ET.....

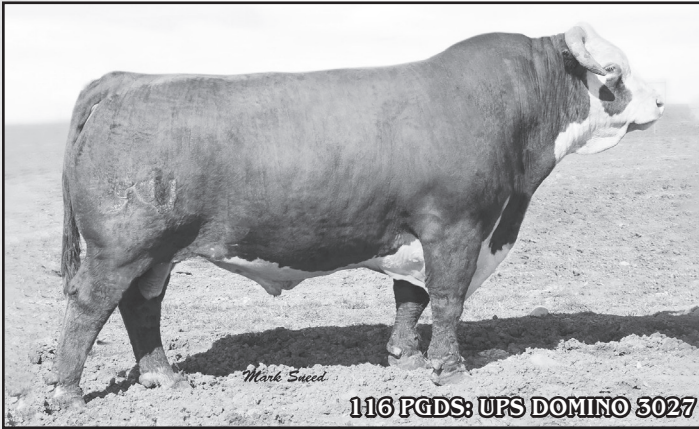
HH ADVANCE 7115T.....
 CL 1 DOMINETTE 016X
 CL 1 DOMINETTE 626S 1ET.....

CL 1 DOMINO 955W
 CL 1 DOMINETTE 615S
 HH ADVANCE 8050U ET
 HH MISS ADVANCE 4021P ET
 L1 DOMINO 03571
 HH MISS ADVANCE 372N
 L1 DOMINO 03396
 CL1 DOMINETTE 118L

CED	BW	WW	YW	Milk	M&G	FAT	REA	MRB	BMI\$	CHB\$
4.7	2.0	49	81	30	55	.033	.60	.02	377	97

An easy doing 5011C son we like his muscle expression and athleticism. First calves coming 2022.

• JUNIOR HERD BULLS •



116 PGDS: UPS DOMINO 3027

SIRE M L3 DESERT TORO 116

REG#	DOB
44254777	8/2/20



DS 1045 ADVANCE 3575N..... HH ADVANCE 1045L
 OR TP DESERT PRIME DS 6805 MS TROY 8605
 OR 3027 MISS DOMINO 006R..... UPS DOMINO 3027
 DS 9059 MS BEEF 815
 DESERT COMFORT 037 L3 DESERT FOX 842 ET
 L3 QUEEN COMFORT 511 L3 MISS GENETIC EDGE 835
 L3 LADY DOMINO 907 CL 1 DOMINO 5131E
 L3 LADY RAZOR 112

CED	BW	WW	YW	Milk	M&G	FAT	REA	MRB	BMI\$	CHB\$
5.4	1.6	59	88	27	56	.053	.69	.38	388	145

Deep bodied, heavily muscled bull that was our selection from our friends at Largent and sons in Kaycee, WY. We look forward to seeing him walk our pastures next summer.



SIRE N CL 1 DOMINO 9201G 1ET

REG#	DOB
44011523	2/10/19



CL 1 DOMINO 215Z..... CL 1 DOMINO 9122W 1ET
 CL 1 DOMINO 710E 1ET CL 1 DOMINETTE 055X
 HH ADVANCE 7026T ET
 HH MISS ADVANCE 7028T ET
 CL 1 DOMINO 994W 1ET..... CL 1 DOMINO 637S 1ET
 CL 1 DOMINETTE 2185Z CL 1 DOMINETTE 440P 1ET
 CL 1 DOMINETTE 966W..... CL 1 DOMINO 477P
 CL 1 DOMINETTE 553R

CED	BW	WW	YW	Milk	M&G	FAT	REA	MRB	BMI\$	CHB\$
5.6	2.9	57	87	27	55	.023	.43	.21	373	125

First progeny were born this year and look to be just as easy doing, thick and soggy as their daddy. Look forward to seeing them mature out. First sons available in 2023.

DAMS OF DISTINCTION



SIRE O BR 69D GRAND SLAM 118G

REG#	DOB
44258038	2/1/19



BR 4W STANMORE 58Y..... DBHR 31R STANMORE 4W
 BR 58Y STANMORE 69D DBHR 74N CLASSIC LADY 57T
 LVH MISS 24W STAND RIB DOM 17Z DBHR 268P WATCHMAN 24W
 LBH 198T MISS RIBSTONE 372W
 ECR L18 EXTRA DEEP 9279
 BR 9279 EXTRA DEEP 15Z..... DBHR 42R SILVER 102T
 BR 15Z MISS HART 111C DBHR 129S UNLIMITED 52U
 BR 52U MISS HART 108Y..... DBHR 20P HART 106S

CED	BW	WW	YW	Milk	M&G	FAT	REA	MRB	BMI\$	CHB\$
-4.4	7.1	53	74	12	39	-.027	.45	.10	351	124

First calves were born this year and boy are we excited! 118G's sons are fast growing, athletic and flat stout. Be on the lookout for his sons in the coming years. First sons available in 2023.



According to The American Hereford Association (AHA), "A cow receiving the Dam of Distinction honor is a cow that meets the highest standards of commercial cattle production. The cow must do her job, but her owner must also manage the herd correctly to give her the opportunity to excel. Only a few active cows are recognized. All heifers have the potential to be a Dam of Distinction, but only a small percentage fit the job description of an ideal cow year in and year out. Females attaining the Dam of Distinction status are recognized with "DOD" after their names on the AHA website."

• COMING TWO-YEAR-OLD BULLS •



LOT 006 **SHR HOMETOWN BOY 006H**

REG#	DOB	H/P/S	Act. BW	Act. WW	Act. YW
44207811	3/23/20	H	80	660	1000

NJW 73S W18 HOMETOWN 10Y ET .. SHF WONDER M326 W18 ET
H5 10Y HOMETOWN 6194 HH ADVANCE 7056T
 H5 MS 7056 ADVANCE 1281..... H5 MS 486 DOMET 627
 THR THOR 3213A..... MAC'S RENDITON 20X
QUEEN THOR 7129 THR MISS THOR 7125T
 PEARL DIAMOND 841 OXH DIAMOND 2215
 MISS EXPLORER 134

CED	BW	WW	YW	Milk	M&G	FAT	REA	MRB	BMI\$	CHB\$
5.6	2.4	49	76	21	45	.003	.26	.11	324	107

Big square hipped Hometown son that moves around easy. Traces back to Diamond 2215 on mothers side.



LOT 011 **SHR IRONSIGHT 011H**

REG#	DOB	H/P/S	Act. BW	Act. WW	Act. YW
44207624	3/28/20	H	75	654	1065

CL 1 DOMINO 0130X 1ET..... CL 1 DOMINO 860U
SR SCOPE 117E CL 1 DOMINETTE 440P 1ET
 SR BENITA 464B..... BRC FACTOR Y19
 SR DOODLES 842
 KB L1 DOMINO 218
LADY L1 DOMINO 207 KB L1 DOMINETTE 636
 MISS ROBIN HOOD 342 HH ROBIN HOOD L130
 SH LADY DOMINO 011

CED	BW	WW	YW	Milk	M&G	FAT	REA	MRB	BMI\$	CHB\$
8.6	0.7	45	83	32	54	.013	.33	.18	289	124

An easy fleshing 117 son that has plenty of natural thickness about him. Maternal Grand sire is a SOD. Qualifies for the CHB Program.



LOT 013 **SHR L1 DOMINO 013H**

REG#	DOB	H/P/S	Act. BW	Act. WW	Act. YW
44207612	4/5/20	H	85	708	1110

HH ADVANCE 1087Y ET HH ADVANCE 8050U ET
CL 1 DOMINO 3146A HH MISS ADVANCE 6109S
 CL 1 DOMINETTE 036X 1ET..... HH ADVANCE 5104R
 CL 1 DOMINETTE 475P
 R 157K NORTH STAR 50W K 64H RIBSTONE LAD 157K
STAR LADY 170 R STARLETTE 410
 LADY L1 DOMINO 797 KB L1 DOMINO 563R
 SH MISS DOMINO 977

CED	BW	WW	YW	Milk	M&G	FAT	REA	MRB	BMI\$	CHB\$
7.4	3.1	57	87	25	54	.043	.40	.14	324	114

A high performing 3146 son that is soggy made with plenty of hip and muscle. Dam 170 worked hard for us in many years of adverse conditions. 013 has all the attributes to make a set of scale crushers. CHB Qualifier.



LOT 015 **SHR IRONSIGHT 015H**

REG#	DOB	H/P/S	Act. BW	Act. WW	Act. YW
44207683	4/6/20	H	85	673	1195

CL 1 DOMINO 0130X 1ET..... CL 1 DOMINO 860U
SR SCOPE 117E CL 1 DOMINETTE 440P 1ET
 SR BENITA 464B..... BRC FACTOR Y19
 SR DOODLES 842
 CHURCHILL CAPTAIN 2128Z ET..... CHURCHILL SENSATION 028X
SENSIBLE LADY 502 CHURCHILL LADY 9123W ET
 PEARL DIAMOND 918 OXH DIAMOND 2215
 SH LADY DOMINO 011

CED	BW	WW	YW	Milk	M&G	FAT	REA	MRB	BMI\$	CHB\$
3.0	3.2	55	102	34	62	.023	.53	.16	364	128

Imagine a whole potload of feeders looking just like him! Long, thick explosive tremendous muscle and expression are just a few things that could be said about 015. He qualifies for the CHB Maternal Advantage and Premium Red Baldy Programs. Dam 502 is a standout Captain female that works hard year in and year out for us.

• COMING TWO-YEAR-OLD BULLS •



**LOT
027**

SHR HOMETOWN BOY 027H

REG#	DOB	H/P/S	Act. BW	Act. WW	Act. YW
44207756	4/10/20	H	85	708	1125

NJW 73S W18 HOMETOWN 10Y ET .. SHF WONDER M326 W18 ET
H5 10Y HOMETOWN 6194 NJW P606 72N DAYDREAM 73S
 H5 MS 7056 ADVANCE 1281..... HH ADVANCE 7056T
 H5 MS 486 DOMET 627
 UPS DOMINO 3027 CL 1 DOMINO 9126J 1ET
NORTHERN LIGHT LADY 3107 UPS MISS DIAMOND 1353
 SUPER MOM 139 /S MISTER MOM 7745
 LADY STANDARD 651S

CED	BW	WW	YW	Milk	M&G	FAT	REA	MRB	BMI\$	CHB\$
6.9	1.9	55	89	28	55	.023	.51	.14	400	126

WOW! Here is a bull that you are going to want to get eyes on. This muscular 6194 son really is something to visually appraise, deep bodied, big muscular stifle and above all built like a herd bull. 027 stems back to 3027 and Mr. Mom 7745 through Northern Light Lady 3107, who raised the 9174 bull in last year's sale. 027 has 14 of 20 traits in the top 50% of the breed or higher as well as qualifying for every value added Program the AHA offers. 027 is a true rancher's bull that has the capabilities to have an impact from pasture to plate for years to come.

**LOT
039**

SHR HOMETOWN BOY 039H

REG#	DOB	H/P/S	Act. BW	Act. WW	Act. YW
44207682	4/12/20	H	75	632	930

NJW 73S W18 HOMETOWN 10Y ET .. SHF WONDER M326 W18 ET
H5 10Y HOMETOWN 6194 NJW P606 72N DAYDREAM 73S
 H5 MS 7056 ADVANCE 1281..... HH ADVANCE 7056T
 H5 MS 486 DOMET 627
 CHURCHILL CAPTAIN 2128Z ET..... CHURCHILL SENSATION 028X
SENSIBLE LADY 500 CHURCHILL LADY 9123W ET
 PEARL DIAMOND 912 OXH DIAMOND 2215
 SH LADY DOMINO 068

CED	BW	WW	YW	Milk	M&G	FAT	REA	MRB	BMI\$	CHB\$
9.2	0.8	48	77	24	48	.023	.33	.19	372	117

A smooth made 6194 son that is red to the ground and chalk full of beef and is out of a truly beautiful Captain daughter. 039 is correct in his design and has the tabulations to show promise as a heifer bull being in the top 8% of the breed for calving ease direct and top 10% of the breed for birth weight along with posting a 75 lbs. actual birth weight.



**LOT
043**

MLS-LINEBACKER 043

REG#	DOB	H/P/S	Act. BW	Act. WW	Act. YW
44206412	4/12/20	H	90	668	1075

CL 1 DOMINO 215Z..... CL 1 DOMINO 9122W 1ET
CL 1 DOMINO 432B CL 1 DOMINETTE 055X
 CL1 DOMINETTE 1152Y..... HH ADVANCE 9016W ET
 CL 1 DOMINETTE 717T
 R 157K NORTH STAR 50W K 64H RIBSTONE LAD 157K
LADY NORTH STAR 388 R STARLETTE 410
 PEARL DIAMOND 744 OXH DIAMOND 2215
 SH MISS DOMINO 013

CED	BW	WW	YW	Milk	M&G	FAT	REA	MRB	BMI\$	CHB\$
0.4	4.5	52	90	25	52	.033	.32	.09	351	115

Long as a tractor trailer and muscular is the best way to describe this 432B son. His mother has put two bulls through the sale prior to him and she hit once again on 043 a lot of cow power behind this guy.

**LOT
053**

SHR L1 DOMINO B 053H

REG#	DOB	H/P/S	Act. BW	Act. WW	Act. YW
44207714	4/14/20	H	80	556	952

KC L1 DOMINO 12050..... HH ADVANCE 0207X
BCC L1 DOMINO 489B KC MISS RIBSTONE 09040
 BCC L1 DOMINETTE 129Y..... UPS DOMINO 5216
 CL 1 DOMINO 432B..... BCC L1 PRINCESS 549
MISSY SHEPPET 708 CL 1 DOMINO 215Z
 PRINCESS NAVARRO 5203 CL1 DOMINETTE 1152Y
 SR NAVARRO 140X
 MISS BONANZA 811

CED	BW	WW	YW	Milk	M&G	FAT	REA	MRB	BMI\$	CHB\$
5.1	1.9	50	81	28	52	.033	.33	.15	373	117

Here is a thick made 489B son that we enjoyed watching grow this summer. Bull like a brick and is athletic.

• COMING TWO-YEAR-OLD BULLS •



LOT 060	SHR L1 DOMINO B 060H					
	REG#	DOB	H/P/S	Act. BW	Act. WW	Act. YW
	44207788	4/15/20	H	95	696	1040

KC L1 DOMINO 12050..... HH ADVANCE 0207X
 BCC L1 DOMINO 489B KC MISS RIBSTONE 09040
 UPS DOMINO 5216
 BCC L1 DOMINETTE 129Y..... BCC L1 PRINCESS 549
 CHURCHILL CAPTAIN 2128Z ET..... CHURCHILL SENSATION 028X
 CHURCHILL LADY 9125W ET
 SENSIBLE LADY 5192 SH BONANZA 5007
 MISS BONANZA 929 MISS EXPLORER 486

CED	BW	WW	YW	Milk	M&G	FAT	REA	MRB	BMI\$	CHB\$
1.3	3.8	51	83	31	57	.023	.32	.20	395	114

Here is a whale of good 489B son, soggy made with loads of muscle and an AHA DOD qualifies for CHB Maternal Advantage and the Premium Red Baldy Value Programs.



LOT 075	SHR L1 DOMINO B 075H					
	REG#	DOB	H/P/S	Act. BW	Act. WW	Act. YW
	44207709	4/16/20	H	85	636	1005

KC L1 DOMINO 12050..... HH ADVANCE 0207X
 BCC L1 DOMINO 489B KC MISS RIBSTONE 09040
 UPS DOMINO 5216
 BCC L1 DOMINETTE 129Y..... BCC L1 PRINCESS 549
 CHURCHILL SENSATION 028X
 UU SENSATION 2053..... UU HALEY 0080
 LADY SENSATION 704 SR NAVARRO 150X
 PRINCESS NAVARRO 231 MISS DOMINO 956

CED	BW	WW	YW	Milk	M&G	FAT	REA	MRB	BMI\$	CHB\$
4.3	2.3	46	79	31	54	.023	.25	.11	401	107

Square made 489B son out of a sure shot 2053 daughter that raises them right! 075 is efficient by design and has the ability to sire a set of blue ribbon heifers that will knock your socks off. At the time this comment was written he qualifies for the Maternal Advantage and Premium Red Baldy Female Programs.



LOT 063	STR HOMETOWN BOY 063H					
	REG#	DOB	H/P/S	Act. BW	Act. WW	Act. YW
	44207776	4/15/20	H	80	644	1040

NJW 73S W18 HOMETOWN 10Y ET.. SHF WONDER M326 W18 ET
 H5 10Y HOMETOWN 6194 NJW P606 72N DAYDREAM 73S
 HH ADVANCE 7056T
 H5 MS 7056 ADVANCE 1281..... H5 MS 486 DOMET 627
 HH ADVANCE 1087Y ET
 CL 1 DOMINO 3146A..... CL 1 DOMINETTE 036X 1ET
 LADY L1 DOMINO A 5133 CHURCHILL RANCHER 8108U ET
 MISS RANCHERETTE 121 LADY MOM 727

CED	BW	WW	YW	Milk	M&G	FAT	REA	MRB	BMI\$	CHB\$
8.1	1.3	55	83	26	54	.033	.24	.13	322	109

Curley haired red 6194 with a lot going on. Large outlined, rugged and athletic this guy will sire a heck of a set of feeding calves without sacrificing the necessary qualities to make momma cows. Dam 5133 is a standout 3146A daughter tracing her lineage back to Rancher 8108 and Mr. Mom 7745.



LOT 080	SHR MISTER DOMINO 080H					
	REG#	DOB	H/P/S	Act. BW	Act. WW	Act. YW
	44207782	4/17/20	H	90	732	1120

LJS MARK DOMINO 0945..... LJS MARK DOMINO 0709
 H5 0945 DOMINO 7208 ET LJS MS ADVANCE 0601
 C.J.H. HARLAND 408
 H5 MS 408 DOMET 764 H5 MS GP DOMET 4118
 CHURCHILL RANCHER 592R
 CHURCHILL RANCHER 8108U ET..... CL 1 DOMINETTE 301N
 LADY RANCHER 5161 DS RENDITION 359W
 LADY YANKEE 174 LADY ROBIN HOOD 838

CED	BW	WW	YW	Milk	M&G	FAT	REA	MRB	BMI\$	CHB\$
0.6	4.3	61	90	31	62	.013	.44	.14	230	124

A true cowboys kind of beef bull! 080 has phenomenal substance of bone, works his way up into a big muscular hip and has ideal depth and curvature of rib all tied into one thick bull. Dam 5161 is an AHA DOD that is a standout 2015 born rancher daughter. You are going to want to find this ranch-ready herd bull prospect in the pens sale day.

• COMING TWO-YEAR-OLD BULLS •



LOT 086		SHR L1 DOMINO A 086								
REG#	DOB	H/P/S	Act. BW	Act. WW	Act. YW					
44207671	4/18/20	H	96	736	1070					
HH ADVANCE 1087Y ET			HH ADVANCE 8050U ET							
CL 1 DOMINO 3146A			HH MISS ADVANCE 6109S							
CL 1 DOMINETTE 056X 1ET.....			HH ADVANCE 5104R							
CHURCHILL RANCHER 8108U ET.....			CL 1 DOMINETTE 475P							
LADY RANCHER 445			CHURCHILL RANCHER 592R							
MISS RANCHERETTE 121			CL 1 DOMINETTE 301N							
			CHURCHILL RANCHER 8108U ET							
			LADY MOM 727							
CED	BW	WW	YW	Milk	M&G	FAT	REA	MRB	BMI\$	CHB\$
1.9	4.4	65	97	31	64	.033	.34	.12	305	113

LOT 091		SHR L1 DOMINO A 091H								
REG#	DOB	H/P/S	Act. BW	Act. WW	Act. YW					
44207670	4/18/20	H	93	722	1035					
HH ADVANCE 1087Y ET			HH ADVANCE 8050U ET							
CL 1 DOMINO 3146A			HH MISS ADVANCE 6109S							
CL 1 DOMINETTE 056X 1ET.....			HH ADVANCE 5104R							
R 157K NORTH STAR 50W			CL 1 DOMINETTE 475P							
LADY NORTH STAR 442			K 64H RIBSTONE LAD 157K							
PEARL DIAMOND 534			R STARLETTE 410							
			OXH DIAMOND 2215							
			SH LADY DOMINO 081							
CED	BW	WW	YW	Milk	M&G	FAT	REA	MRB	BMI\$	CHB\$
4.3	4.4	60	98	27	57	.023	.41	.04	342	106

This 3146 Rancher combination is a surefire way to maximize pounds of profitability. 086 qualifies for the CHB Program and the mother cow backing up this ranch-ready bull is a Dam of Distinction.

Deep, thick and red! This bulls has gas in the tank to sire a set of scale crushing feeder calves. Dam 442 has put several high end bulls in the sale before including a full brother that went to Lance Kaufman last year.



LOT 0104		SHR HOMETOWN BOY 0104I								
REG#	DOB	H/P/S	Act. BW	Act. WW	Act. YW					
44310796	4/20/20	H	94	658	935					
NJW 73S W18 HOMETOWN 10Y ET...			SHF WONDER M326 W18 ET							
H5 10Y HOMETOWN 6194			NJW P606 72N DAYDREAM 73S							
H5 MS 7056 ADVANCE 1281.....			HH ADVANCE 7056T							
L3 DESERT FREQUENCY 118			H5 MS 486 DOMET 627							
SHR PRAIRIE FREQUENCY 370			L3 WINN RAMBO 851							
MISS RANCHERETTE 173			SBC LADY GOLD 4012							
			CHURCHILL RANCHER 8108U ET							
			SUPER MOM 846A							
CED	BW	WW	YW	Milk	M&G	FAT	REA	MRB	BMI\$	CHB\$
3.7	3.1	52	86	24	50	.008	.28	.10	309	111

LOT 0108		SHR L1 DOMINO B 0108H								
REG#	DOB	H/P/S	Act. BW	Act. WW	Act. YW					
44207809	4/20/20	H	90	768	1175					
CL 1 DOMINO 215Z.....			CL 1 DOMINO 9122W 1ET							
CL 1 DOMINO 432B			CL 1 DOMINETTE 055X							
CL1 DOMINETTE 1152Y.....			HH ADVANCE 9016W ET							
BCC L1 DOMINO 489B			CL 1 DOMINETTE 717T							
MAGNOLIA L1 DOMINO B 7123			KC L1 DOMINO 12050							
MS CAPTAIN 418			BCC L1 DOMINETTE 129Y							
			CHURCHILL CAPTAIN 2128Z ET							
			PEARL DIAMOND 941							
CED	BW	WW	YW	Milk	M&G	FAT	REA	MRB	BMI\$	CHB\$
-1.2	4.2	68	105	33	67	.033	.40	.09	380	113

This is a square made thick bull that moves around with ease.

Big boned, square hiped 432B son that has the presence of a breeding bull. Dam 7123 is a good young cow that has a bright future.

• COMING TWO-YEAR-OLD BULLS •



LOT 0129 SHR HOMETOWN BOY 0129H

REG#	DOB	H/P/S	Act. BW	Act. WW	Act. YW
44207615	4/22/20	H	94	702	1005

NJW 73S W18 HOMETOWN 10Y ET .. SHF WONDER M326 W18 ET
H5 10Y HOMETOWN 6194 HH ADVANCE 7056T NJW P606 72N DAYDREAM 73S
H5 MS 7056 ADVANCE 1281..... HH ADVANCE 7056T
R 157K NORTH STAR 50W H5 MS 486 DOMET 627
STAR LADY 194 K 64H RIBSTONE LAD 157K
PEARL DIAMOND 7011 R STARLETTE 410
OXH DIAMOND 2215
SH LADY SPECIAL 861

CED	BW	WW	YW	Milk	M&G	FAT	REA	MRB	BMI\$	CHB\$
3.7	4.3	53	86	25	52	.003	.28	.03	344	101

A deep soggy 6194 son out of an AHA Dam of Distinction. 0129 has been a standout since birth. Folks even commented on his presence in the branding pen. This bull has plenty of bells and whistles to create a set of feeders that will push a scale through the ground while maintaining the merits needed to make momma cows.



LOT 0136 SHR IRONSIGHT 0136H

REG#	DOB	H/P/S	Act. BW	Act. WW	Act. YW
44207785	4/22/20	H	82	618	960

CL 1 DOMINO 0130X 1ET..... CL 1 DOMINO 860U
SR SCOPE 117E CL 1 DOMINETTE 440P 1ET
SR BENITA 464B..... BRC FACTOR Y19
CHURCHILL RANCHER 8108U ET..... SR DOODLES 842
LADY PENDLETON RANCHER 5171 CHURCHILL RANCHER 592R
LADY LI DOMINO 05..... CL 1 DOMINETTE 301N
MISS BONANZA 3120

CED	BW	WW	YW	Milk	M&G	FAT	REA	MRB	BMI\$	CHB\$
2.4	3.8	56	99	29	57	.023	.31	.15	301	116

Here is a Scope son with plenty of spine. He has a calm demeanor and carries himself across the pasture like a true ranch-ready bull! His mother, dam 5171 is an all time favorite even being deemed as one of moms "Pets!"



LOT 0138 SHR L1 DOMINO B 0138H

REG#	DOB	H/P/S	Act. BW	Act. WW	Act. YW
44207736	4/22/20	H	85	600	980

KC L1 DOMINO 12050..... HH ADVANCE 0207X
BCC L1 DOMINO 489B KC MISS RIBSTONE 09040
BCC L1 DOMINETTE 129Y..... UPS DOMINO 5216
CL 1 DOMINO 432B..... BCC L1 PRINCESS 549
MISSY SHEPPET 784 CL 1 DOMINO 215Z
LADY LI DOMINO A 555..... CL1 DOMINETTE 1152Y
CL 1 DOMINO 3146A
LADY T-BONE ROBIN HOOD 21

CED	BW	WW	YW	Milk	M&G	FAT	REA	MRB	BMI\$	CHB\$
2.8	2.8	56	87	30	58	.033	.26	.11	369	106

Balanced, deep made 489B that move like a cat. Dam 784 is a real moderately made soft sided momma cow that is turning into an elite brood cow. 0138 does qualify for Maternal Advantage and Premium Red Baldy Female Programs thus we dubbed him an SHR Matron Maker.



LOT 0148 SHR L1 SHEP 0148H

REG#	DOB	H/P/S	Act. BW	Act. WW	Act. YW
44207685	4/23/20	H	83	612	844

CL 1 DOMINO 215Z..... CL 1 DOMINO 9122W 1ET
CL 1 DOMINO 432B CL 1 DOMINETTE 055X
CL1 DOMINETTE 1152Y..... HH ADVANCE 9016W ET
UU HARLEY 9130 CL 1 DOMINETTE 717T
LADY HARLEY 523 H5 408 DOMINO 7100
PEARL DIAMOND 841 UU MS 056 7115
OXH DIAMOND 2215
MISS EXPLORER 134

CED	BW	WW	YW	Milk	M&G	FAT	REA	MRB	BMI\$	CHB\$
3.3	2.2	50	72	26	51	.023	.17	.03	333	102

An easy fleshing 432B son out of a whale of a 9130 daughter that raises them right.

• COMING TWO-YEAR-OLD BULLS •



LOT 0158 SHR L1 DOMINO B 0158H

REG#	DOB	H/P/S	Act. BW	Act. WW	Act. YW
44207734	4/24/20	H	90	508	950

KC L1 DOMINO 12050..... HH ADVANCE 0207X
 BCC L1 DOMINO 489B KC MISS RIBSTONE 09040
 BCC L1 DOMINETTE 129Y..... UPS DOMINO 5216
 CHURCHILL CAPTAIN 2128Z ET..... BCC L1 PRINCESS 549
 LADY CAPTAIN 775 CHURCHILL SENSATION 028X
 STAR LADY 194..... CHURCHILL LADY 9125W ET
 R 157K NORTH STAR 50W
 PEARL DIAMOND 7011

CED	BW	WW	YW	Milk	M&G	FAT	REA	MRB	BMI\$	CHB\$
3.4	3.4	41	79	31	52	.033	.23	.19	404	113

Here is a great 489B son raised by a whale of a Captain daughter. He has a lot of the key components to create economical females and scale crushing steers.



LOT 0161 SHR L1 DOMINO A 0161H

REG#	DOB	H/P/S	Act. BW	Act. WW	Act. YW
44310358	4/25/20	H	94	670	978

HH ADVANCE 1087Y ET..... HH ADVANCE 8050U ET
 CL 1 DOMINO 3146A HH MISS ADVANCE 6109S
 CL 1 DOMINETTE 036X 1ET..... HH ADVANCE 5104R
 KB L1 DOMINO 563R..... CL 1 DOMINETTE 475P
 LADY L1 DOMINO 107 RCH ADVANCE 2139
 MISS EXPLORER 574..... KB DOMINETTE 3128
 F EXPLORER 953
 SH 1 MISS DOM 5037

CED	BW	WW	YW	Milk	M&G	FAT	REA	MRB	BMI\$	CHB\$
0.9	4.9	62	101	16	48	.008	.31	.06	277	101

High performing 3146 son that has the attributes to produce a set of scale crushing feeding calves.



LOT 0171 SHR IRONSIGHT 0171H

REG#	DOB	H/P/S	Act. BW	Act. WW	Act. YW
44207800	4/27/20	H	88	544	900

CL 1 DOMINO 0130X 1ET..... CL 1 DOMINO 860U
 SR SCOPE 117E CL 1 DOMINETTE 440P 1ET
 SR BENITA 464B..... BRC FACTOR Y19
 SR DOODLES 842
 UU SENSATION 2053..... CHURCHILL SENSATION 028X
 SENSATIONAL LADY 6183 UU HALEY 0080
 MISS RED ADDITION 079..... BLL RED ADDITION 175T
 SH LADY DOMINO 031

CED	BW	WW	YW	Milk	M&G	FAT	REA	MRB	BMI\$	CHB\$
2.9	2.9	46	82	34	57	.023	.37	.11	381	118

Here is a long, dark red Scope 117 son with plenty of thickness about him. Dam 6183 is a knock it out of the park 2053 daughter that raises the right kind, even earning the coveted title Dam of Distinction! 0171 hit the mark on CHB and BMI indexes to qualify for number of value added programs.



LOT 0178 SHR HOMETOWN BOY 0178

REG#	DOB	H/P/S	Act. BW	Act. WW	Act. YW
44207693	4/29/20	H	80	622	992

NJW 73S W18 HOMETOWN 10Y ET.. SHF WONDER M326 W18 ET
 H5 10Y HOMETOWN 6194 NJW P606 72N DAYDREAM 73S
 H5 MS 7056 ADVANCE 1281..... HH ADVANCE 7056T
 H5 MS 486 DOMET 627
 HH ADVANCE 1087Y ET
 CL 1 DOMINO 3146A..... CL 1 DOMINETTE 036X 1ET
 LADY L1 DOMINO A 623 KB L1 DOMINO 563R
 LADY L1 DOMINO 022..... MISS ROBIN HOOD 360

CED	BW	WW	YW	Milk	M&G	FAT	REA	MRB	BMI\$	CHB\$
5.6	2.0	57	91	21	49	.023	.31	.09	304	108

A chip off the old block, long, deep and soggy with plenty of muscle! He has a moderate birth weight and a desirable growth curve.

• COMING TWO-YEAR-OLD BULLS •



LOT 0182		MLS-LINEAGE 0182									
REG#	DOB	H/P/S	Act. BW	Act. WW	Act. YW						
44206423	4/29/20	H	85	612	1015						
CL 1 DOMINO 215Z.....			CL 1 DOMINO 9122W 1ET								
CL 1 DOMINO 432B			CL 1 DOMINETTE 055X								
CL 1 DOMINETTE 1152Y.....			HH ADVANCE 9016W ET								
TP DESERT XPERT 327.....			CL 1 DOMINETTE 717T								
MLS-LADY XPERT 660			NJW 98S R117 RIBEYE 88X ET								
LADY NORTH STAR 388.....			TP LADY HARRIET 128								
			R 157K NORTH STAR 50W								
			PEARL DIAMOND 744								
CED	BW	WW	YW	Milk	M&G	FAT	REA	MRB	BMI\$	CHB\$	
-0.3	3.7	53	87	25	52	.033	.36	.11	358	113	

0182 is a well balanced 432B son out of a tremendous cow family tracing back to Diamond 2215. 0182 will help maximize profit qualifying for CHB, Premium Red Baldy and Maternal Advantage Programs. Look for this thick bull in the pens sale day!



LOT 0205		SHR L1 DOMINO SHEP 0205H									
REG#	DOB	H/P/S	Act. BW	Act. WW	Act. YW						
44206475	5/7/20	H	90	652	960						
CL 1 DOMINO 215Z.....			CL 1 DOMINO 9122W 1ET								
CL 1 DOMINO 432B			CL 1 DOMINETTE 055X								
CL 1 DOMINETTE 1152Y.....			HH ADVANCE 9016W ET								
KB L1 DOMINO 563R.....			CL 1 DOMINETTE 717T								
LADY L1 DOMINO 129			RCH ADVANCE 2139								
LADY ROBIN HOOD 614.....			KB DOMINETTE 3128								
			HH ROBIN HOOD L130								
			MISS JACKIE 716								
CED	BW	WW	YW	Milk	M&G	FAT	REA	MRB	BMI\$	CHB\$	
2.1	2.9	55	87	19	47	.023	.36	.08	320	116	

A deep made, stout soggy 432B son with a big square hip, Dam 129 is a deep soggy cow that worked hard for us.



LOT 0212		SHR HOMETOWN BOY 0212H									
REG#	DOB	H/P/S	Act. BW	Act. WW	Act. YW						
44207799	5/11/20	H	85	544	878						
H5 10Y HOMETOWN 6194			SHF WONDER M326 W18 ET								
H5 MS 7056 ADVANCE 1281.....			NJW P606 72N DAYDREAM 73S								
UU SENSATION 2053.....			HH ADVANCE 7056T								
SENSATIONAL LADY 6176			H5 MS 486 DOMET 627								
LADY L1 DOMINO 150.....			CHURCHILL SENSATION 028X								
			UU HALEY 0080								
			KB L1 DOMINO 9175W								
			LADY ROBIN HOOD 938								
CED	BW	WW	YW	Milk	M&G	FAT	REA	MRB	BMI\$	CHB\$	
6.4	2.0	47	81	26	50	.013	.17	.10	370	106	

A moderate 6194 son out of a dynamite 2053 daughter! Qualifies for the Premium Red Baldy and Maternal Advantage Programs.



LOT 0225		SHR L1 DOMINO F 0225H									
REG#	DOB	H/P/S	Act. BW	Act. WW	Act. YW						
44207744	5/16/20	H	80	572	874						
CL 1 DOMINO 5110C.....			CL 1 DOMINO 3100A 1ET								
CL 1 DOMINO 878F			CL 1 DOMINETTE 055X								
CL 1 DOMINETTE 528C.....			CL 1 DOMINO 386A 1ET								
CL 1 DOMINO 3146A.....			CL 1 DOMINETTE 120Y								
MISS L1 WILLOWETT 807			HH ADVANCE 1087Y ET								
MISS BONANZA 812.....			CL 1 DOMINETTE 036X 1ET								
			SH BONANZA 5007								
			LADY DOMINO 380								
CED	BW	WW	YW	Milk	M&G	FAT	REA	MRB	BMI\$	CHB\$	
1.0	3.4	58	92	31	60	.033	.29	.15	371	116	

A deep bodied, square long 878 3146 combination. Posting a 80 lbs. birth weight and an attainable growth curve. You can't tell this younger bull was raised by a first time momma!

• COMING TWO-YEAR-OLD BULLS •



LOT 0237	SHR L1 DOMINO A 0237H					
	REG#	DOB	H/P/S	Act. BW	Act. WW	Act. YW
	44207537	5/21/20	H	95	660	932

LOT 0241	MLS-HOMBOY 0241					
	REG#	DOB	H/P/S	Act. BW	Act. WW	Act. YW
	44206417	5/23/20	H	89	558	876

HH ADVANCE 1087Y ET
 CL 1 DOMINO 3146A
 CL 1 DOMINETTE 036X 1ET.....
 UU SENSATION 2053.....
 SENSATIONAL LADY 712
 PRINCESS BONANZA 970.....
 HH ADVANCE 8050U ET
 HH MISS ADVANCE 6109S
 HH ADVANCE 5104R
 CL 1 DOMINETTE 475P
 CHURCHILL SENSATION 028X
 UU HALEY 0080
 SH BONANZA 5007
 SH L1 LADY DOMINO 235

NJW 73S W18 HOMETOWN 10Y ET ..
 H5 10Y HOMETOWN 6194
 H5 MS 7056 ADVANCE 1281.....
 CL 1 DOMINO 215Z.....
 MLS-L1 DOMINETTE 600
 CL1 DOMINETTE 4138B.....
 SHF WONDER M326 W18 ET
 NJW P606 72N DAYDREAM 73S
 HH ADVANCE 7056T
 H5 MS 486 DOMET 627
 CL 1 DOMINO 9122W 1ET
 CL 1 DOMINETTE 055X
 HH ADVANCE 0118X
 CL 1 DOMINETTE 7138T

CED	BW	WW	YW	Milk	M&G	FAT	REA	MRB	BMI\$	CHB\$
0.1	4.7	66	93	32	65	.033	.29	.13	386	105

CED	BW	WW	YW	Milk	M&G	FAT	REA	MRB	BMI\$	CHB\$
1.7	2.8	57	93	21	50	.033	.23	.08	354	107

Wow! A performance powerhouse being born at the back end of things didn't hurt this guy one bit! Athletic, soggy and balanced are just a few good ways to describe this guy. Keep your eyes peeled for him on the 3rd!

Don't let this guy fool you. He is calf full of performance and power. Being the youngest bull in the offering didn't stop this guy from exploding with muscle and expression. Dam 600 is a tremendous 215Z daughter that continues to raise solid calves year in and year out even selling a half sister to Scott Simenson in 2020.



Thank You For Attending Our Sale!



• COMMERCIAL BULLS •



**LOT
016**

REG#	DOB	H/P/S	Act. BW	Act. WW	Act. YW
N/A	4/6/20	H	80	662	1003

Smooth made, commercial grade bull with loads of muscle and style.



**LOT
047**

REG#	DOB	H/P/S	Act. BW	Act. WW	Act. YW
N/A	4/14/20	H	75	586	875

Here is a very balanced bull with some stretch and muscle. He would be an ideal way to put some muscle on a scale.



**LOT
097**

REG#	DOB	H/P/S	Act. BW	Act. WW	Act. YW
N/A	4/19/20	H	97	712	1030

This commercial grade bull is not one to overlook long spined, extra deep and chalked full of red meat. 097 would be a good bull for big country as to his overall athleticism.

• COMMERCIAL BRED HEREFORD HEIFERS •

This year's commercial heifers are just as exceptional as they are every year! Deep bodied, easy fleshing and above all else feminine! The heifers were serviced by OPP ENHANCE 001 and OPP ENHANCE 008, the bulls were turned out on June 31st and pulled off on August 28th.

The heifers have been Bangs Vaccinated, and they have received a full line of animal health shots since birth. These heifers were vaccinated with Preg. Guard 10 in the spring of the year before we turned them out to grass. In November the heifers were Preg.

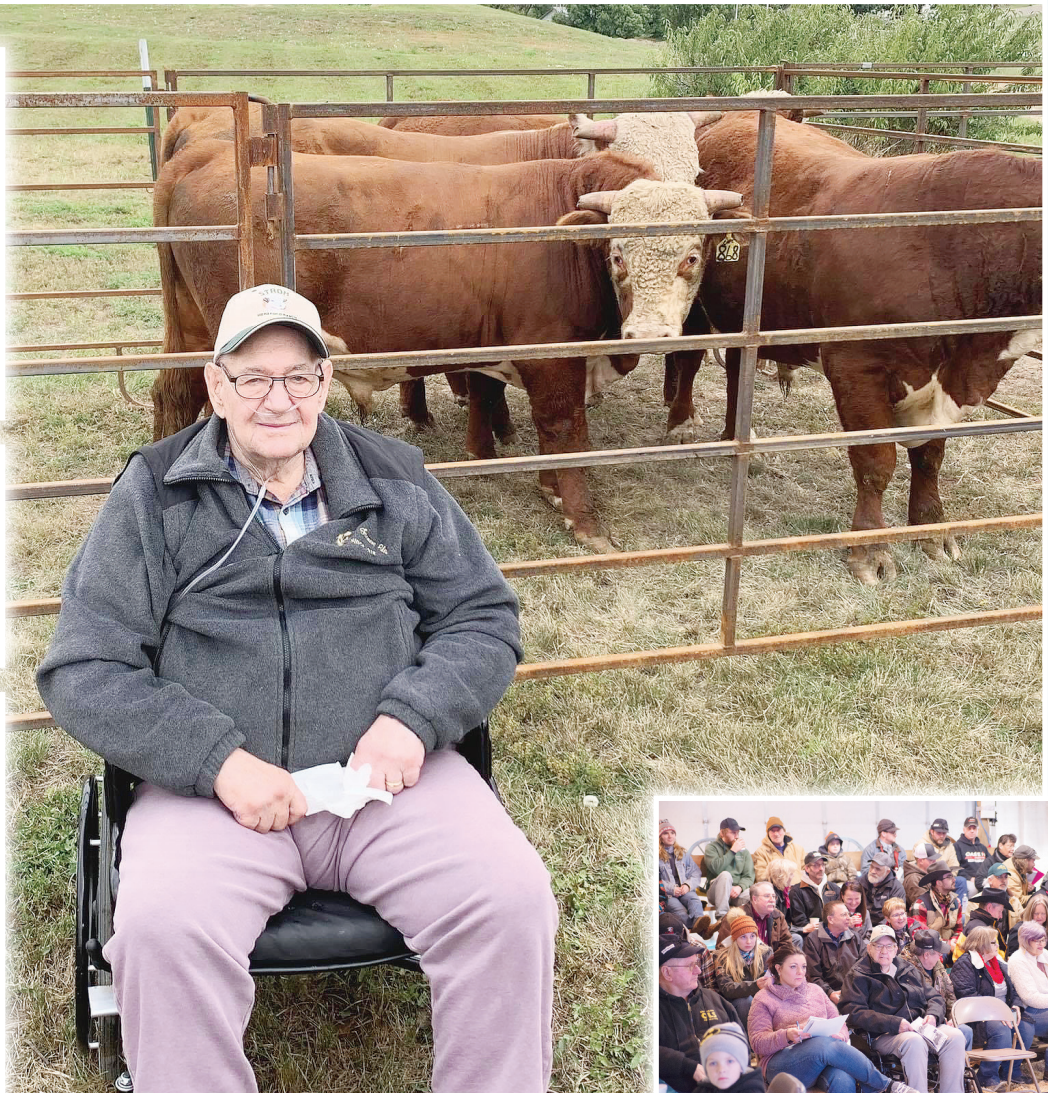
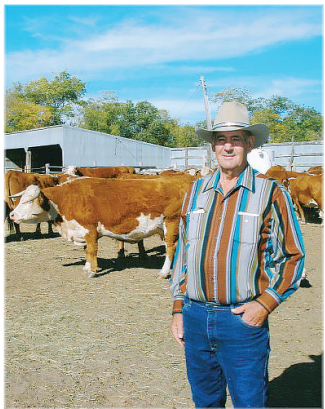
Checked by West Dakota Veterinary Clinic out of Dickinson, North Dakota. They were called bred and received a shot of 7-way and they were poured with Ivomec.

Throughout the summer the heifers were caked every-other-day with cake from Woody's out of Dickinson, ND. At the end of November the Heifers were brought back to the place to "winter". The Heifers have been developed on a forage based diet and fed free choice Woody's Western Grazer Mineral. If you have any questions regarding the heifers please contact Mike (701-290-1006) or Matt (701-690-4860).



In Loving Memory of Tony Stroh

Your presence we miss, your memory we treasure. Loving you always, forgetting you never.



STROH HEREFORDS
1010 Hwy 22 S
Killdeer, ND 58640

FIRST-CLASS
U.S. POSTAGE
PAID
UNITED
PRINTING



32nd Annual Ranch-Ready Production Sale
THURSDAY, FEBRUARY 3, 2022

1:00 p.m. (MT) • At the Ranch

Selling: 33 Coming Two-Year-Old Bulls

10 Commercial Bred Hereford Heifers • 20 F1 Baldy Yearling Heifers

