

STROH HEREFORD RANCH

36th Annual Ranch-Ready Production Sale

THURSDAY, FEBRUARY 5, 2026

1:00 p.m. (MT) • At the Ranch



Dear Cattlemen and Women:

WOW—what a year it has been. It began with uncertainty as dry conditions had many producers contemplating hard decisions to get through the summer. Then, in mid-May, the faucet turned on and stayed on, bringing much-needed relief across the country. The summer followed with record feeder calf prices, a pullback tied to political pressure in October, and a market correction before Christmas. Regardless of those swings, it is an exciting time to be in the beef industry—and to own the factory: good mama cows.

We believe this strong market has some staying power. If we could predict exactly when the next consistent downturn would come, we'd be holding the sale somewhere in the tropics. Since we can't, the best way to protect and advance your operation—no matter the market—is to invest in bulls that will move your cow herd in the right direction and deliver value for years to come.

This year's sale bulls tell that story. They were born into a mild spring and transitioned into a dry summer full of grass, hoppers, flies, and dust—real-world conditions. With the help of good mothers, they grew into solid calves. After weaning, a mild winter allowed them to develop naturally into rugged, ranch-ready two-year-old bulls. They went to grass in June, were cake-broke, and received Amiferm Range Pro Mineral along with 25-12 Flaxlic tubs throughout the summer. In August, we introduced a light grain ration in preparation for the Montana Hereford Tour. Ahead of the tour, they were brought into the lot for display and fed millet hay, grass hay, and a light grain ration. Following the tour, they were turned back out to the grass to avoid mud until clipping was completed. Since early November, the bulls have been in the lot on a steady, moderate ration of Powerboost, silage, hay, and Gordy Steffans' bull developer.

This feeding program demonstrates our bulls' ability to gain and express their phenotypic power—without pushing them. These bulls have not been fed for Denver or the butcher shop. They are developed with one goal in mind: to best serve the commercial cow-calf producer.

We are also proud to offer another solid group of commercial-grade bred heifers. These females were range-raised and handled the challenging conditions of the Missouri Plateau well. They went to grass in May, were cake-broke, and received Edi salt blocks throughout the summer. On July 2, the heifers were sorted into breeding pasture and exposed to two Angus heifer bulls sourced from Ficek Cattle Company of Manning, ND, and Ellingson Angus of St. Anthony, ND. Pregnancy checking was completed in December by Dr. Chance Noyce of Circle C Veterinary Service.

Bull videos were recorded in late December 2025 and are expected to be available on Livestock Link in early January.

As always, the bulls will be on display the afternoon before the sale and on sale day. If you would like to stop by ahead of time to sort through the offering, the coffee is always on, and you are welcome anytime. We sincerely thank our past customers for their continued support and look forward to visiting with you—whether at the ranch, on the phone, or down the road.

We hope to see you on sale day.

~ The Stroh Family
Mike, Dawn, Lucas and Matthew Stroh

1010 Highway 22 South, Killdeer, ND 58640
701-573-4373 (home phone)
701-290-1191 (Mike's Cell)
701-690-4860 (Matt's Cell)
acmecatl@ndsupernet.com



Matt, Dawn, Mike and Lucas Stroh

Like us on:

Follow us on:



78 years of raising cattle with today's cattleman in mind

STROH HEREFORD RANCH 2026

36th Annual Ranch-Ready Production Sale

THURSDAY, FEBRUARY 5, 2026

1:00 p.m. (MT) • At the Ranch • Join us for a free lunch

Selling: 52 Horned and Scurred Coming Two-Year-Old Bulls

15 Bred Commercial Hereford Heifers *(Bred to Black Angus Bulls)*

7 F1 Baldy Heifers from Stroh Hereford Ranch

30 F1 Baldy Heifers from Guest Consigner; Sorenson Ranch *(Watford City, ND)*

AUCTIONEER:

Scott Weishaar 701-872-5299 • Cell: 701-426-6826

SALES REPRESENTATIVES:

Jill Hotchkiss, Hereford America 605-490-1409

Marc Hotchkiss, The Livestock Link 605-210-1956

Aaron Friedt, American Hereford Association ... 701-590-9597

Kevin Murnin, Western Livestock Journal 406-853-4638

Scott Dirk, Tri-State Livestock News 605-380-6024

SPECIAL GUESTS:

North Dakota Hereford Association President: Dan Donnelly

North Dakota Hereford Queen: Mika Stuber

North Dakota Hereford Princess: Hailey Klym

TERMS & CONDITIONS: All cattle will be sold to the highest bidder without reserve. The terms of the sale will be cash. The auctioneer will settle any dispute as to bids.

Each animal will become the property of the buyer as soon as sold. Cattle will be cared for a reasonable length of time after the sale, at the buyer's risk. Announced changes in catalog information sale day, take precedence over printed material in this catalog. Everyone attending this sale does so at his own responsibility and risk, and without liability on the part of the owner or his employees.

GUARANTEE: All bulls of breeding age are guaranteed breeders. If an animal fails to breed after a trial of six months, it may be returned to the seller at buyer's expense. The seller reserves the right to try said animal for six months and if it proves a breeder to return it to the station of buyer at seller's expense. If the animal proves to be a non-breeder it will be replaced with an animal of equal quality or credit will be given for next years sale.

We assume no liability legal or otherwise to make any further compensation to the buyer no other warranty of any nature is expressed or implied.

Extreme care has been taken in copying each pedigree to avoid errors. We are not to be held responsible for any error which might appear and which is beyond our control in the printing of the catalog.

DELIVERY: Deliveries will be made on purchase of \$4000 or more to central points up to 400 miles. We will cooperate with buyers on delivery of all cattle regardless of number or distance. No delivery provided for heifers.

ABSENTEE BIDDING: Anybody wishing to bid that cannot attend the sale may place a phone bid by contacting any listed sales representative, (Aaron Friedt, Scott Dirk, Kevin Murnin and Jill Hotchkiss), Mike Stroh, Matt Stroh or Scott Weishaar.

KILLDEER ACCOMMODATIONS: Cobblestone Hotel & Suites, 701-764-2200; Mountain View Hotel, 701-764-5843.

We will cooperate with delivery arrangements or take \$100.00 (per bull) off if picked up on sale day (Bulls only)

Videos online at: www.thelivestocklink.com

The Livestock Link

STROH HEREFORD SALE LOCATION



**Sale will be held at
10550 Highway 200,
Killdeer, ND.**

**Located east of
the Highway 22
and Highway 200
Roundabout
or six miles west of
Dunn Center, ND on
Highway 200.**

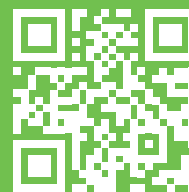
EPDs are current as of 12/31/25

BID FROM ANYWHERE *with*

LiveAg
PUREBRED

- 1. VISIT LIVE-AG.COM**
Navigate to the **"Purebred"** tab, located in the main menu. Select the auction of choice.
 - 2. LOG IN / CREATE AN ACCOUNT**
Select the **"Login or Create an Account"** button. Fill out the required fields to bid online. Agree to the terms of service, and finish with the **"Register"** button. An account is not necessary to watch an auction.
 - 3. REGISTER TO BID**
Once logged in, find your sale of choice and click **"Register to Bid"**. Agree to the terms and conditions, and click the **"Register"** button. Your request will be approved in a timely manner.
- * CALL OUR TEAM WITH ANY QUESTIONS**
We're dedicated to ensuring you have a positive bidding experience. Please call **817-533-6699** with any questions.

**SCAN
TO REGISTER**



CALF and BRED HEIFER MARKETING

Available for
Hereford and
Hereford-Influenced calves.

For more
information, contact
Matt 701-690-4860

THE POWER OF **BLACK.**
ONLY BETTER.

HEREFORDS—THE EFFICIENCY EXPERTS
Adding Hereford genetics to your herd makes perfect business sense in a cost-driven economy. Excellent conversion, hardiness, fertility, longevity and even disposition can help reduce input costs. These Hereford efficiencies are ideal for your herd, your business and your plans for the future. Low-maintenance cattle, long-term profit. Now that's power.

American Hereford Association • P.O. Box 014059, Kansas City, MO 64101 • (815) 842-3757 • www.hereford.org
©2006 American Hereford Association.



TRAIT DEFINITIONS

The American Hereford Association (AHA) currently produces expected progeny differences (EPDs) for 17 traits and calculates three profit (\$) indexes.

CALVING EASE DIRECT (CED) - CE EPD is based on calving ease scores and birth weights and is measured on a percentage. CE EPD indicates the influence of the sire on calving ease in females calving at 2 years of age. For example, if sire A has a CE EPD of 6 and sire B has a CE EPD of -2, then you would expect on average if comparably mated, sire A's calves would be born with an 8% more likely chance of being unassisted when compared to sire B's calves.

BIRTH WEIGHT (BW) - BW EPD is an indicator trait for calving ease and is measured in pounds. For example, if sire A has a BW EPD of 3.6 and sire B has a BW EPD of 0.6, then you would expect on average if comparably mated, sire A's calves would come 3 lb. heavier at birth when compared to sire B's calves. Larger BW EPDs usually, but not always, indicate more calving difficulty. The figure in parentheses found after each EPD is an accuracy value or reliability of the EPD.

WEANING WEIGHT (WW) - WW EPD is an estimate of pre-weaning growth that is measured in pounds. For example, if sire A has a WW EPD of 60 and sire B has a WW EPD of 40, then you would expect on average if comparably mated, sire A's calves would weigh 20 lb. heavier at weaning when compared to sire B's calves.

YEARLING WEIGHT (YW) - YW EPD is an estimate of post-weaning growth that is measured in pounds. For example, if sire A has a YW EPD of 100 and sire B has a YW EPD of 70, then you would expect on average if comparably mated, sire A's calves would weigh 30 lb. heavier at a year of age when compared to sire B's calves.

DRY MATTER INTAKE (DMI) - The Dry Matter Intake EPD predicts the daily consumption of pounds of feed. For example, if sire A has a DMI EPD of 1.1 and sire B has a DMI EPD of 0.1, you would expect sire B's progeny, if comparably mated, to consume on average 1 pound of feed less per day.

SCROTAL CIRCUMFERENCE (SC) - Measured in centimeters and adjusted to 365 days of age, SC EPD is the best estimate of fertility. It is related to the bull's own semen quantity and quality, and is also associated with age at puberty of sons and daughters. Larger SC EPDs suggest younger age at puberty. Yearling sons of a sire with a .7 SC EPD should have yearling scrotal circumference measurements that average 0.7 centimeters (cm) larger than progeny by a bull with an EPD of 0.0 cm. In the Hereford genetic analysis, a multiple-trait model was used for scrotal circumference. Weaning weight was used as a predictor variable to increase the prediction accuracy of SC EPDs. Therefore, an animal with a weaning weight EPD should also have a SC EPD.

SUSTAINED COW FERTILITY (SCF) - The AHA's new Sustained Cow Fertility EPD (SCF) is a prediction of a cow's ability to continue to calve from three years of age through twelve years of age, given she calved as a two-year-old. The EPD is expressed as a deviation in the proportion of the ten-possible calving's to twelve years old expressed as a probability. For example, the daughters of a bull with a 30 EPD would have the genetic potential to have one more calf by age twelve than the daughters from a bull with a 20 EPD. In other words, the daughters from the 30 EPD bull would have a 10% greater probability of having one more calf than the bull with a 20 EPD. This is equivalent to saying that the daughters are 10% more likely to remain in the herd to age 12.

MATERNAL MILK (Milk) - The milking ability of a sire's daughters is expressed in pounds of calf weaned. It predicts the difference in average weaning weights of sires' daughters' progeny due to milking ability. Daughters of the sire with a +14 MM EPD should produce progeny with 205-day weights averaging 24 lb. more (as a result of greater milk production) than daughters of a bull with a MM EPD of -10 lb. (14 minus -10.0 = 24 lb.). This difference in weaning weight is due to total milk production during the entire lactation.

MATERNAL MILK & GROWTH (M&G) - Maternal Milk & Growth reflects what the sire is expected to transmit to his daughters for a combination of growth genetics through weaning and genetics for milking ability. It is an estimate of daughters' progeny weaning weight. A bull with a 29 lb. M&G EPD should sire daughters with progeny weaning weights averaging 19 lb. heavier than progeny of a bull's daughters with a M&G EPD of 10 lb. (29 minus 10 = 19 lb.). It is equal to one-half the sire's weaning weight EPD, plus all of his MM EPD. No accuracy is associated with this since it is simply a mathematical combination of two other EPDs. It is sometimes referred to as "total maternal" or "combined maternal."

MATERNAL CALVING EASE (MCE) - MCE EPD predicts how easily a sire's daughters will calve at 2 years of age and is measured on a percentage. For example, if sire A has a MCE EPD of 7 and sire B has a CE EPD of -3, then you would expect on average if comparably mated, sire A's daughters would calve with a 10% more likely chance of being unassisted when compared to sire B's daughters.

MATURE COW WEIGHT (MCW) - The MCW EPD was designed to help breeders select sires that will either increase or decrease mature size of cows in the herd. The trait was developed after years of cow weight data collection and the EPD relates directly to the maintenance requirements of a cow herd. An example of how the MCW EPD allows breeders to compare sires: If sire A has a MCW EPD of 100 and sire B has an EPD of 85, then you would expect the females of sire A, if mated to similar cows, to be 15 lb. heavier at mature size.

UDDER SUSPENSION (UDDR) - Scores range from 9 (very tight) to 1 (very pendulous) and represent assessments of udder support. Weak udder suspension results in pendulous udders that make it difficult for a calf to nurse. Weak suspension in the udder indicates a lack of support in the ligament that ties the udder to the cow's body wall. Over time, weakness in this ligament will allow the udder to hang down too far from the body and may subject the udder to serious problems and increased potential for injury. UDDR EPDs are reported on the scoring scale. Differences in sire EPDs predict the difference expected in the sires' daughters' udder characteristics when managed in the same environment. For example, if sire A has a UDDR EPD of 0.4, and sire B has a UDDR EPD of -0.1, the difference in the values is 0.5, or one-half of a score. If daughters of sires A and B are raised and managed in the same environment, you would expect half a score better udder suspension in daughters of sire A, compared to sire B.

TEAT SIZE (TEAT) - Scores range from 9 (very small) to 1 (very large, balloon shaped) and are subjective assessments of the teat length and circumference. Oversized

teats are difficult for newborn calves to nurse, and the calf may not receive adequate colostrum. This could lead to a higher incidence of scours or decreased immunity levels in the newborn calf. TEAT EPDs are reported on the scoring scale. Differences in sire EPDs predict the difference expected in the sires' daughters' udder characteristics when managed in the same environment. For example, if sire A has a teat size EPD of 0.4, and sire B has a teat size EPD of -0.1, the difference in the values is 0.5, or one-half of a score. If daughters of sires A and B are raised and managed in the same environment, you would expect half a score smaller teat size in daughters of sire A, compared to sire B.

CARCASS WEIGHT (CW) - Carcass weight is a beneficial trait when considering the impact that pounds have relative to end product value. At the same age constant endpoint, sires with higher values for carcass weight will add more pounds of hot carcass weight compared to sires with lower values for carcass weight. For example, if sire A has a CW EPD of 84 and sire B has a CW EPD 64, then you would expect the progeny of sire A, if harvested at the same age constant endpoint, to have a 20-lb. advantage in terms of hot carcass weight.

RIB FAT (FAT) - The FAT EPD reflects differences in adjusted 365-day, 12th-rib fat thickness based on carcass measurements of harvested cattle. Sires with low, or negative FAT EPDs are expected to produce leaner progeny than sires with higher EPDs. Ultrasound measures are also incorporated into this trait and have been shown to be highly correlated with the performance of slaughter progeny. All data is expressed on a carcass scale.

RIBEYE AREA (REA) - REA EPDs reflect differences in an adjusted 365-day ribeye area measurement based on carcass measurements of harvested cattle. Sires with relatively higher REA EPDs are expected to produce better-muscled and higher percentage yielding slaughter progeny than will sires with lower REA EPDs. Ultrasound measurements are also incorporated into this trait and have been shown to be highly correlated with the performance of slaughter progeny. All data is expressed on a carcass scale.

MARBLING (MRB) - MARB EPDs reflect differences in an adjusted 365-day marbling score (intramuscular fat, IMF) based on carcass measurements of harvested cattle. Breeding cattle with higher MARB EPDs should produce slaughter progeny with a higher degree of IMF and therefore higher quality grades. Ultrasound measurements are also incorporated into this trait and have been shown to be highly correlated with the performance of slaughter progeny. All data is expressed on a carcass scale.

BALDY MATERNAL INDEX (BMI\$) - The Baldy Maternal Index is a maternally focused index that is based on a production system that uses Hereford x Angus cross cows. Progeny of these cows are directed towards Certified Hereford Beef. This index has significant weight on Sustained Cow Fertility, which predicts fertility and longevity of females. There is a slightly positive weight on Weaning Weight, Mature Cow Weight and Milk which accounts for enough growth but ensures females do not increase inputs. There is some negative emphasis on Dry Matter Intake, but a positive weighting on Carcass Weight which is anticipated to provide profitability from finishing of non-replacement females and castrated males. Marbling and Rib-eye Area are also positively weighted to keep the harvested progeny successful for CHB. This index is geared to identify Hereford bulls that will be profitable when used in a rotational cross with mature commercial Angus cows.

BRAHMAN INFLUENCE INDEX (BII\$) - The Brahman Influence Index is a maternally focused index that is based on a production system that uses Brahman x Hereford cross cows. Progeny of these cows are directed towards a commodity beef market since Certified Hereford Beef does not accept Brahman influenced cattle. This index has significant weight on Sustained Cow Fertility, which predicts fertility and longevity of females. There is a slightly positive weight on Weaning Weight, Mature Cow Weight and Milk which accounts for enough growth but ensures females do not increase inputs. There is some negative emphasis on Dry Matter Intake, but a positive weighting on Carcass Weight which is anticipated to provide profitability in finishing non-replacement females and castrated males. Marbling and Rib-eye Area are also positively weighted to keep harvested progeny successful for a variety of commodity based programs. This index targets producers that use Hereford bulls on Brahman influenced cows.

CERTIFIED HEREFORD BEEF INDEX (CHB\$) - The Certified Hereford Beef Index is a terminal sire index that is built on a production system where Hereford bulls are mated to mature commercial Angus cows and all progeny will be targeted for Certified Hereford Beef after the finishing phase. This index has significant weight on Carcass Weight to ensure profit on the rail. As well there is a positive weighting for Average Daily Gain along with a negative weighting on Dry Matter Intake to ensure efficient pounds of growth in the finishing phase. Keep in mind, this production system takes advantage of complimentary breeding with the commercial Angus cow. Although Marbling is weighted positively in this index, a positive weighting for Rib-eye Area and a negative weighting for Back Fat are a greater priority in this index to allow for optimum end-product merit. This is the only index that has no emphasis on fertility. Remember that no replacement heifers are being retained.

THE CHB SIRE OF DISTINCTION

The Certified Hereford Beef Sire of Distinction program recognizes Hereford bulls who excel in carcass traits. The American Hereford Association Board of Directors initiated the program in 2007 to recognize superior carcass bulls.

Qualifications - To qualify as a Certified Hereford Beef Sire of Distinction, a bull must be in the top 25% for the CHB\$ profit index and have a minimum accuracy level of 30% for both ribeye area (REA) and marbling (MRB) expected progeny difference (EPD). The Certified Hereford Beef Sires distinction is used to recognize sires in the Hereford breed that excel in improving carcass traits. A bull receiving the CHB status will be recognized with CHB after his name when doing an animal or EPD inquiry on Hereford.org.

EPDS FOR 2025 BORN CALVES

CED	BW	WW	YW	DMI	SC	SCF	Milk	M&G	MCE
3.7	2.5	57	90	0.2	1.1	17.6	27	55	1.5
MCW	UDDR	TEAT	CW	FAT	REA	MRB	BMI\$	BII\$	CHB\$
90	1.27	1.30	73	.023	.48	.15	378	454	125

• HERD BULLS •



SIRE A H5 10Y HOMETOWN 6194

REG#	DOB
43713062	2/16/16

SHF WONDER M326 W18 ET
NJW 73S W18 HOMETOWN 10Y ET
NJW P606 72N DAYDREAM 73S

HH ADVANCE 7056T
H5 MS 7056 ADVANCE 1281
H5 MS 486 DOMET 627

KCF BENNETT 3008 M326
SHF GOVERNESS 236G L37
PW VICTOR BOOMER P606
NJW 94J DEW 72N
HH ADVANCE 5104R
HH MISS ADVANCE 5020R ET
CL 1 DOMINO 486P
H5 MS 767 ADVANCE 415



CE	BW	WW	YW	Milk	M&G	FAT	REA	MRB	BMI\$	CHB\$
6.4	1.9	58	91	28	57	0.004	0.40	-0.03	394	112

We are very excited to have this bull in our program. He brings a lot of length, width and muscling to the table! This guy is a true power house phenotypically and genotypically especially when you take a look at the maternal figures 57 on milk & growth and 27 on milk! We look forward to the impact he will have on our program in the years to come. 6194 has tested free of all genetic defects including Mandibulofacial Dysostosis this was verified through genetic testing in conjunction with the AHA for breed improvement. This will be the last year that this sires progeny will be available.



SIRE C BR 69D GRAND SLAM 118G

REG#	DOB
C03060593	2/1/19

BR 4W STANMORE 58Y
BR 58Y STANMORE 69D
LVH MISS 24W STAND RIB DOM 17Z

BR 9279 EXTRA DEEP 15Z
BR 15Z MISS HART 111C
BR 52U MISS HART 108Y

DBHR 31R STANMORE 4W
DBHR 74N CLASSIC LADY 57T
DBHR 268P WATCHMAN 24W
LBH 198T MISS RIBSTONE 372W
ECR L18 EXTRA DEEP 9279
DBHR 42R SILVER 102T
DBHR 129S UNLIMITED 52U
DBHR 20P HART 106S



CE	BW	WW	YW	Milk	M&G	FAT	REA	MRB	BMI\$	CHB\$
1.6	4.4	56	72	9	37	-0.016	0.64	0.22	na	na

118G is a true power sire that knows how to cover cows! He stamps them just as even as any Line 1 bull and has left and extra good set of females for us. He is a true outcross sire for us to rely on!



SIRE B CL 1 DOMINO 9201G 1ET

REG#	DOB
44011523	2/10/19

CL 1 DOMINO 215Z
CL 1 DOMINO 710E 1ET
HH MISS ADVANCE 9119W

CL 1 DOMINO 994W 1ET
CL 1 DOMINETTE 2185Z
CL 1 DOMINETTE 966W

CL 1 DOMINO 9122W 1ET
CL 1 DOMINETTE 055X
HH ADVANCE 7026T ET
HH MISS ADVANCE 7028T ET
CL 1 DOMINO 637S 1ET
CL 1 DOMINETTE 440P 1ET
CL 1 DOMINO 477P
CL 1 DOMINETTE 553R



CE	BW	WW	YW	Milk	M&G	FAT	REA	MRB	BMI\$	CHB\$
1.5	4.5	57	86	26	55	0.024	0.24	0.06	329	109

Here is an extra soggy 710 son that has left us with super females!



SIRE D CL 1 DOMINO 079H

REG#	DOB
44139106	1/10/20

HH ADVANCE 5044C ET
CL 1 DOMINO 7131E 1ET
CL 1 DOMINETTE 3175A

CL 1 DOMINO 955W
CL 1 DOMINETTE 1183Y ET
CL 1 DOMINETTE 440P 1ET

CL 1 DOMINO 215Z
HH MISS ADVANCE 1072Y ET
CL 1 DOMINO 1161Y
CL 1 DOMINETTE 1123Y 1ET
CL 1 DOMINO 637S 1ET
CL 1 DOMINETTE 5152R
CL 1 DOMINO 9126J 1ET
CL 1 DOMINETTE 974J



CE	BW	WW	YW	Milk	M&G	FAT	REA	MRB	BMI\$	CHB\$
5.5	2.2	59	102	34	64	0.054	0.46	-0.05	299	119

079H was our pick out of the Cooper Hereford Ranch 2021 production sale. We feel that he is an individual that is hard to match in terms of depth and rib. He is backed by some phenomenal cow power going back to 440P and the legendary 055X cow. Progeny are early maturing and look the part of breeder bulls and brood cows. Owned in partnership with Cooper Hereford Ranch, Willow Creek, Mont. Semen available.

• HERD BULLS •



SIRE E JH ADVANCE 0227H

REG#	DOB
44140972	1/27/20

CL 1 DOMINO 420B 1ET
HH ADVANCE 7088E
HH MISS ADVANCE 4021B
CL 1 DOMINO 2160Z 1ET
JH L1 DOMINETTE 5141C
JH MISS ADVANCE 1132Y



CE	BW	WW	YW	Milk	M&G	FAT	REA	MRB	BMI\$	CHB\$
-1.7	4.1	51	85	31	57	0.054	0.25	0.24	437	131

A tremendous 7088 son that does a lot of things correctly, calves hit the ground, this spring, full of muscle and a lot of go. Looking forward to watching them mature in the coming month's. 0227 expresses phenomenal length, depth and thickness and moves around with tremendous athleticism. He is a true cowboys beef bull that will leave a mark on our program. Co-owned with Johansen Herefords in Castle Dale, Utah.



SIRE F JH ADVANCE 1283J

REG#	DOB
44246249	3/2/21

HH ADVANCE 4082B ET
HH ADVANCE 6212D ET
HH MISS ADVANCE 7003T
JH ADVANCE 5114C
JH MISS ADVANCE 8134F
JH L1 DOMINETTE 1147Y



CE	BW	WW	YW	Milk	M&G	FAT	REA	MRB	BMI\$	CHB\$
10.0	1.8	64	94	25	57	0.084	0.14	0.14	305	98

A smaller framed Johansen bull with a big hip and smooth shoulder. We look forward to seeing his first offspring this spring.



SIRE G XTC 83G SUPER RIB 1J

REG#	DOB
C03084179	3/20/21

DONORAH 8B SUPER LAD 14E
XTC 14E SUPER RIB 83G
XTC RIB LASS 123D
LBH 106Z EXTRA DEEP 96C
XTC 96C LYNX 65G
XTC 955W LYNX 12E



CE	BW	WW	YW	Milk	M&G	FAT	REA	MRB	BMI\$	CHB\$
4.0	3.6	60	80	25	55	0.024	0.56	-0.02	na	na

Breeder bull deluxe. 1J is a deep-bodied, curve-bender bull. With a 77 pound birthweight and an adjusted WW of 805. We look forward to getting this exciting outcross sire here and walking our pastures. 1J is a rugged, soggy, athletic bull that has muscle to burn. We are really looking forward to seeing the first calves this spring. Super Rib 1J is our 2022 pick from XTC Ranches of Eastend, Sask. We feel he will compliment our functional approach to creating cattle for working ranches.



SIRE H KL DESERT TORO 1010

REG#	DOB
44347738	5/23/21

DS 1045 ADVANCE 3575N
OR TP DESERT PRIME
OR 3027 MISS DOMINO 006B
L3 DESERT FOX 842 ET
KL FOXY LADY 421
KL JC LADY ZEUS 132



CE	BW	WW	YW	Milk	M&G	FAT	REA	MRB	BMI\$	CHB\$
8.1	2.1	55	90	32	60	0.074	0.70	0.54	494	175

Our selection from the Largent and Sons 2022 production sale. We like his big powerful hip, superior muscle shape and true athleticism. We feel this outcross pedigree will complement our practical approach for creating cattle for working ranches.

• HERD BULLS •



SIRE I BR 234F FORTY CREEK 63K

REG# DOB
C03094827 2/8/22

BR 58Y STANDARD 213B
BR 213B FORTY CREEK 234F
BR 15Z LADY ET 153C
BR 028X SENSATION 157B
BR 157B SUPER DANDY 6E
BR 58Y SUPER DANDY 18C
BR 4W STANMORE 58Y
BR 52U SILVER DOMINO 145Z
BR 9279 EXTRA DEEP 15Z
DBHR 68J STANDARD 155S
CHURCHILL SENSATION 028X
BR 52U STAR DONALD 151Z
BR 4W STANMORE 58Y
BR 4S SUPER DANDY 32A

GEEPD

CE	BW	WW	YW	Milk	M&G	FAT	REA	MRB	BMI\$	CHB\$
5.1	3.2	49	75	23	48	0.054	0.45	0.11	na	na

Here is another outcross sire that we have brought in to our program to help compliment the Line 1 genetics we have been incorporating. 63K was our pick out of the 2023 Braun Ranch Production Sale for his style, structure, thickness, and length. He has a good momma cow backing him up and he himself looks to be at home out in the hills covering cows. We look forward to seeing his genetic presence established in our cow herd.



SIRE K JH L1 DOMINO 241K

REG# DOB
44344631 1/31/22

GB L1 DOMINO 311W
CL 1 DOMINO 660D 1ET
CL 1 DOMINETTE 1178Y
CL 1 DOMINO 472B 1ET
JH L1 DOMINETTE 7112E
JH MISS ADVANCE 5101C
GB L1 DOMINO 177R
GB L1 DOM PRCS 160R
CL 1 DOMINO 862U
CL 1 DOMINETTE 777T 1ET
CL 1 DOMINO 215Z
CL 1 DOMINETTE 759T 1ET
HH ADVANCE 0002X
MONTANA MISS 9114W

GEEPD

CE	BW	WW	YW	Milk	M&G	FAT	REA	MRB	BMI\$	CHB\$
7.2	0.8	53	82	36	62	0.074	0.52	0.26	322	137

241 is a square made stout bull straight out of the high desert, he's very athletic and an easy keeper to boot. We look forward to seeing his first calves born in 2024.



SIRE J JH L1 DOMINO 221K

REG# DOB
44343947 1/23/22

HH ADVANCE 7156E ET
CL 1 DOMINO 9108G 1ET
CL 1 DOMINETTE 9184W
HH ADVANCE 5011C ET
JH MISS ADVANCE 7182E
JH L1 DOMINETTE 3117A

GEEPD

CE	BW	WW	YW	Milk	M&G	FAT	REA	MRB	BMI\$	CHB\$
6.8	1.8	60	87	23	53	0.004	0.35	0.07	380	129

221K is a well-balanced smooth patterned bull that we believe possesses the necessary attributes to build functional range cows. We are looking forward to seeing this bull's offspring in April of 2024.



SIRE L CL 1 DOMINO 394L 1ET

REG# DOB
44459640 1/12/23

HH ADVANCE 3297A ET
HH ADVANCE 7156E ET
HH MISS ADVANCE 1056Y ET
CL 1 DOMINO 215Z
CL 1 DOMINETTE 450B
CL 1 DOMINETTE 1178Y
CL 1 DOMINO 091X
HH MISS ADVANCE 9228W
HH ADVANCE 8050U ET
HH MISS ADVANCE 6005S
CL 1 DOMINO 9122W 1ET
CL 1 DOMINETTE 055X
CL 1 DOMINO 862U
CL 1 DOMINETTE 777T 1ET

GEEPD

CE	BW	WW	YW	Milk	M&G	FAT	REA	MRB	BMI\$	CHB\$
0.0	5.5	72	109	22	58	0.064	0.58	0.22	342	144

Stout extra correct 7156 son that brings performance to the table! Owned with Cooper Herefords, Willow Creek, Mont.

• HERD BULLS •



SIRE
M

H5 1115J DOMINO 371

REG#	DOB
44463902	2/7/23

CL 1 DOMINO 9108G 1ET
CL 1 DOMINO 1115J 1ET
CL 1 DOMINETTE 713E 1ET

HH ADVANCE 5019C ET
H5 MS 5019 ADVANCE 8156
H5 MS 0011 ADVANCE 4167 1ET

HH ADVANCE 7156E ET
CL 1 DOMINETTE 9184W
CL 1 DOMINO 215Z
HH MISS ADVANCE 9119W
CL 1 DOMINO 215Z
HH MISS ADVANCE 1072Y ET
HH ADVANCE 0011X ET
H5 MS 9213 DOMET 410



CE	BW	WW	YW	Milk	M&G	FAT	REA	MRB	BMI\$	CHB\$
3.7	4.2	65	98	34	66	0.024	0.41	0.14	437	123

Deep made balanced bull with extra thickness. First calves weaned off phenomenally. Owned with Harrell Hereford Ranch, Baker City, Ore.



SIRE
N

KL 728 DESERT EXPLOSION 355

REG#	DOB
44505596	4/1/23

L3 DIRECT VISION 485
DESERT EXPLOSION 728
L3 QUEEN COMFORT 226

OR TP DESERT PRIME
KL DESERT CHICA 9006
KL LADY XPERT 357



STAR L3 GERBER VISION 053
DH LOVELY VISION 182
DESERT COMFORT 037
DH DESERT OASIS 041
DS 1045 ADVANCE 3575N
OR 3027 MISS DOMINO 006R
NJW 98S R117 RIBEYE 88X ET
L3 LADY FREQUENCY 032

CE	BW	WW	YW	Milk	M&G	FAT	REA	MRB	BMI\$	CHB\$
-0.3	4.4	73	116	29	65	-0.006	0.98	0.38	466	174

Large outline stout made bull that's growth and carcass driven! Owned with Largent and Sons, Kaycee, Wyo. Semen Available.



• JUNIOR HERD BULLS •



SIRE CL 1 DOMINO 4189M

O

REG# DOB
44554247 1/22/24

CL 1 DOMINO 9126J 1ET
CL 1 DOMINO 121J 1ET
CL 1 DOMINETTE 671D 1ET

CL 1 DOMINO 0186H
CL 1 DOMINETTE 275K
CL 1 DOMINETTE 954G



HH ADVANCE 767G 1ET
CL 1 DOMINETTE 490
CL 1 DOMINO 4163B 1ET
CL 1 DOMINETTE 1112Y 1ET
HH ADVANCE 7156E ET
CL 1 DOMINETTE 6162D
CL 1 DOMINO 7131E 1ET
CL 1 DOMINETTE 680D 1ET

CE	BW	WW	YW	Milk	M&G	FAT	REA	MRB	BMI\$	CHB\$
6.3	1.7	66	110	37	71	0.034	0.48	0.32	393	156

Calving ease, maternally driven bull that we are excited to use in our program.



SIRE NL DESERT CS FIELDMAN 556

P

REG# DOB
44653781 3/27/25

CHURCHILL ROUGHNECK 0280H ET
CHURCHILL STANFIELD 3122L
CHURCHILL LADY 890F

OR TP DESERT PRIME
NL DESERT CHICA 997
NL QUEEN JASEMINE 739



CHURCHILL ROUGH RIDER 719E
CHURCHILL W4 LADY 770E
CHURCHILL GALLATIN 5211C ET
CHURCHILL LADY 4222B
DS 1045 ADVANCE 3575N
OR 3027 MISS DOMINO 006R
TP MR. WINN DURANGO 480
NL LADY TUFF 528

CE	BW	WW	YW	Milk	M&G	FAT	REA	MRB	BMI\$	CHB\$
1.1	4.2	72	117	39	75	0.014	0.74	0.28	483	122

A stout high-growth bull that we look forward to getting out with cows this spring. Owned with Largent and Sons, Kaycee, Wyo.



SIRE BR 59H HONOR ROLL 155L

Q

REG# DOB
C03105194 3/1/23

BR 213B OLD SCHOOL 101F
BR 101F HONOR ROLL 59H
BR 58Y SUPER DANDY 18C

AGA 67X ELECTRIC EXPRESS 16E
BR 16E LADY 169J
BR 157B LADY 112E



BR 58Y STANDARD 213B
BR 15Z LADY ET 168C
BR 4W STANMORE 58Y
BR 4S SUPER DANDY 32A
AGA 705 EASYGOING EXPRESS 67X
AGA 114L MISS GENERAL 89U
BR 028X SENSATION 157B
BR 15Z LADY ET 149C

CE	BW	WW	YW	Milk	M&G	FAT	REA	MRB	BMI\$	CHB\$
11.0	1.6	49	80	30	55	0.024	0.31	0.25	na	na

Square, deep, and thick! Outcross sire that we believe will complement our no-nonsense approach to creating rugged ranch-ready bulls.



SIRE XTC 81H EXPLOSIVE LAD 163L

R

REG# DOB
C03109549 4/29/23

SNS 371B EXPLOSIVE LAD 49F
SNS EXPLOSIVE LAD 81H
SNS 14A CHINOOK LASS 1C

MVF 219T STD TURIN LAD 216C
XTC 216C TURIN LASS 150H
DON 929 DOMINO LASS 4Z



CARLRAMS C45X EXPLOSIVE 371B
SNS 40W WESTERN LASS 77Z
YV 30U STD SUN LAD ET 14A
SNS 66W STANMORE LASS 41A
BBSF 46P TURIN 219T
MVF 21R STD POWER LASS 228U
CL 1 DOMINO 929W
DON 77J SUPER LAREDO 15N

CE	BW	WW	YW	Milk	M&G	FAT	REA	MRB	BMI\$	CHB\$
-3.5	5.8	61	92	23	54	0.044	0.27	0.30	na	na

Extra wide made outcross sire that we look forward to implementing.

• COW HERD •

Culling is the key to a successful cow herd, we cull on feet, utters and disposition as well as efficiency. We also have expectations for our momma cows. First and foremost we expect our cows to be able to go out and forage they are not fed any extra feed till the snows deep or the weather gets unbearably cold. Next, we calve out on rangeland, our cows must be able to lay down have their calf and have them up and nursing in a short amount of time. Thirdly, we only have our bulls out for 45-50 days so it is critical that they breed up in that time frame. Finally, we believe a short calving interval puts money into your pocket. Pictured below are some of our momma cows that we believe have been sharpened by iron into true queens of the range.



• DAMS OF DISTINCTION •

According to The American Hereford Association (AHA), "A cow receiving the Dam of Distinction honor is a cow that meets the highest standards of commercial cattle production. The cow must do her job, but her owner must also manage the herd correctly to give her the opportunity to excel. Only a few active cows are recognized. All heifers have the potential to be a Dam of Distinction, but only a small percentage fit the job description of an ideal cow year in and year out. Females attaining the Dam of Distinction status are recognized with "DOD" after their names on the AHA website."

Stroh Hereford Ranch is pleased to say that we have a number of cows that are recognized by the American Hereford Association as Dams of Distinction. This is a recognition we have strived to achieve over the years because we know at the heart of every successful ranch is a solid cow herd.



• COMING TWO-YEAR-OLD BULLS •



LOT 404

LOT 404

SHR 241K MESA 404

REG#	DOB	H/P/S	Act. BW	Act. WW	Act. YW
44694420	3/30/24	Horned	85	696	980

CL 1 DOMINO 660D 1ET
JH L1 DOMINO 241K
JH L1 DOMINETTE 7112E

CHURCHILL CAPTAIN 2128Z ET
MS CAPTAIN 418
PEARL DIAMOND 941

GB L1 DOMINO 311W
CL 1 DOMINETTE 1178Y
CL 1 DOMINO 472B 1ET
JH MISS ADVANCE 5101C
CHURCHILL SENSATION 028X
CHURCHILL LADY 9123W ET
OXH DIAMOND 2215
SH LADY DOMINO 033



CE	BW	WW	YW	Milk	M&G	FAT	REA	MRB	BMI\$	CHB\$
4.2	2.2	48	81	35	59	0.064	0.54	0.26	327	150

Stout made 241 son with one heck of a captain 2128 daughter backing him up! Certified Hereford beef program qualifying bull!



LOT 408

LOT 408

SHR 6194 PRIMETIME 408

REG#	DOB	H/P/S	Act. BW	Act. WW	Act. YW
44694421	3/30/24	Horned	84	682	920

NJW 73S W18 HOMETOWN 10Y ET
H5 10Y HOMETOWN 6194
H5 MS 7056 ADVANCE 1281

SH CAPTAIN 553
LITTLE MISS CAPTAIN 804
MISSY SHEPPET 6104



CE	BW	WW	YW	Milk	M&G	FAT	REA	MRB	BMI\$	CHB\$
4.6	1.4	56	88	31	60	0.044	0.36	0.09	468	115

Extra complete 6194 son with ample muscle and eye appeal. Sure to be a cow maker, he qualifies for every maternal program the A.H.A. offers. Dam raised the 317 bull in last year's sale That sold to Neughbaurs in South Dakota.



LOT 410

LOT 410

SHR 0227H LITTLE MO 410

REG#	DOB	H/P/S	Act. BW	Act. WW	Act. YW
44708894	3/31/24	Horned	90	594	926

HH ADVANCE 7088E
JH ADVANCE 0227H
JH L1 DOMINETTE 5141C

CL 1 DOMINO 432B
MISSY SHEPPET 098H
LADY HARLEY 205

CL 1 DOMINO 420B 1ET
HH MISS ADVANCE 4021B
CL 1 DOMINO 2160Z 1ET
JH MISS ADVANCE 1132Y
CL 1 DOMINO 215Z
CL 1 DOMINETTE 1152Y
UU HARLEY 9130
PEARL DIAMOND 870



CE	BW	WW	YW	Milk	M&G	FAT	REA	MRB	BMI\$	CHB\$
3.7	3.5	50	86	26	51	0.044	0.28	0.05	370	116

Large outlined 0227 son that's another sure-fire cow maker.



LOT 422

SHR KING DOMINO 422

REG#	DOB	H/P/S	Act. BW	Act. WW	Act. YW
44694425	4/5/24	Horned	90	676	965

CL 1 DOMINO 7131E 1ET
CL 1 DOMINO 079H
CL 1 DOMINETTE 1183Y ET

SH CAPTAIN 553
LITTLE MISS CAPTAIN 828
RANCHER LADY 645

HH ADVANCE 5044C ET
CL 1 DOMINETTE 3175A
CL 1 DOMINO 955W
CL 1 DOMINETTE 440P 1ET
CHURCHILL CAPTAIN 2128Z ET
MISS BONANZA 722
CHURCHILL RANCHER 8108U ET
STAR LADY 113

CE	BW	WW	YW	Milk	M&G	FAT	REA	MRB	BMI\$	CHB\$
2.1	3.7	60	97	28	58	0.044	0.33	0.07	318	119

A Sure shot 079 Captain combination.

• COMING TWO-YEAR-OLD BULLS •



**LOT
428**

SHR KING DOMINO 428

REG#	DOB	H/P/S	Act. BW	Act. WW	Act. YW
44694483	4/6/24	Horned	90	570	870

CL 1 DOMINO 7131E 1ET
CL 1 DOMINO 079H
CL 1 DOMINETTE 1183Y ET

CL 1 DOMINO 432B
MISSY L1 SHEPETT 870
SAGA LADY 4042
HH ADVANCE 5044C ET
CL 1 DOMINETTE 3175A
CL 1 DOMINO 955W
CL 1 DOMINETTE 440P 1ET
CL 1 DOMINO 215Z
CL 1 DOMINETTE 1152Y
SR SAGA 1072Z
LADY HARLEY 211

CE	BW	WW	YW	Milk	M&G	FAT	REA	MRB	BMI\$	CHB\$
2.5	3.5	59	96	31	60	0.054	0.28	0.03	318	117

Thick made 079 son with a sure shot 432 daughter backing him up should make some sure-fire range cattle that feed well.

**LOT
432**

SHR 079H DOMINO 432

REG#	DOB	H/P/S	Act. BW	Act. WW	Act. YW
44708531	4/6/24	Horned	95	614	968

CL 1 DOMINO 7131E 1ET
CL 1 DOMINO 079H
CL 1 DOMINETTE 1183Y ET

CHURCHILL RANCHER 8108U ET
LADY RANCHER 636
SH L1 DOMINO 318
HH ADVANCE 5044C ET
CL 1 DOMINETTE 3175A
CL 1 DOMINO 955W
CL 1 DOMINETTE 440P 1ET
CHURCHILL RANCHER 592R
CL 1 DOMINETTE 301N
KB L1 DOMINO 826U
MISS BONANZA 772

CE	BW	WW	YW	Milk	M&G	FAT	REA	MRB	BMI\$	CHB\$
1.2	4.5	59	101	30	60	0.024	0.29	0.01	270	109

Good growthy 079 Rancher combination note his DMI is in the top 39% of the breed!



LOT 440

**LOT
440**

SHR 079H DOMINO 440

REG#	DOB	H/P/S	Act. BW	Act. WW	Act. YW
44708535	4/7/24	Horned	99	674	1005

CL 1 DOMINO 7131E 1ET
CL 1 DOMINO 079H
CL 1 DOMINETTE 1183Y ET

CL 1 DOMINO 3146A
LADY L1 DOMINO A 6136
LADY L1 DOMINO 111
HH ADVANCE 5044C ET
CL 1 DOMINETTE 3175A
CL 1 DOMINO 955W
CL 1 DOMINETTE 440P 1ET
HH ADVANCE 1087Y ET
CL 1 DOMINETTE 036X 1ET
KB L1 DOMINO 9175W
MISS DOMINO 931

CE	BW	WW	YW	Milk	M&G	FAT	REA	MRB	BMI\$	CHB\$
0.2	4.4	64	104	29	61	0.034	0.35	-0.02	295	111

Large outlined clean made 079 son with some true cow power behind him. Dam 6136 put his full brother in at the top of the sale report in 2024 to Behm Herefords of Burlington, ND.



LOT 447

**LOT
447**

SHR 118G HIGH PLAINS 447

REG#	DOB	H/P/S	Act. BW	Act. WW	Act. YW
44708540	4/8/24	Horned	98	592	860

BR 58Y STANMORE 69D
BR 69D GRAND SLAM 118G
BR 15Z MISS HART 111C

CL 1 DOMINO 432B
SHR MISSY SHEPETT 1311
QUEEN THOR 5168
BR 4W STANMORE 58Y
LVH MISS 24W STAND RIB DOM 17Z
BR 9279 EXTRA DEEP 15Z
BR 52U MISS HART 108Y
CL 1 DOMINO 215Z
CL 1 DOMINETTE 1152Y
THR THOR 3213A
LADY STAR 206

CE	BW	WW	YW	Milk	M&G	FAT	REA	MRB	BMI\$	CHB\$
-1.9	4.9	68	101	22	56	0.004	0.71	0.16	339	131

Good stout 118G son that checks a lot of boxes's this bull has a string of front pasture type of cows.

• COMING TWO-YEAR-OLD BULLS •



LOT 449

LOT 449 SHR 9201G BOZEMAN 449

REG#	DOB	H/P/S	Act. BW	Act. WW	Act. YW
44708541	4/8/24	Horned	70	662	972

CL 1 DOMINO 710E 1ET
CL 1 DOMINO 9201G 1ET
CL 1 DOMINETTE 2185Z

CL 1 DOMINO 3146A
MISS WILLOWETT 7233
LADY L1 DOMINO 162
CL 1 DOMINO 215Z
HH MISS ADVANCE 9119W
CL 1 DOMINO 994W 1ET
CL 1 DOMINETTE 966W
HH ADVANCE 1087Y ET
CL 1 DOMINETTE 036X 1ET
KB L1 DOMINO 563R
MISS BONANZA 438

CE	BW	WW	YW	Milk	M&G	FAT	REA	MRB	BMI\$	CHB\$
3.1	3.9	58	90	26	55	0.024	0.25	0.02	296	100

Thick made 9201 son that would work well in rough country.



LOT 451

LOT 451 SHR 0227H LITTLE MO 451

REG#	DOB	H/P/S	Act. BW	Act. WW	Act. YW
44708544	4/9/24	Horned	73	576	842

HH ADVANCE 7088E
JH ADVANCE 0227H
JH L1 DOMINETTE 5141C

H5 10Y HOMETOWN 6194
SHR HOMETOWN GIRL 1131I
LADY L1 DOMINO A 6136
CL 1 DOMINO 420B 1ET
HH MISS ADVANCE 4021B
CL 1 DOMINO 2160Z 1ET
JH MISS ADVANCE 1132Y
NJW 73S W18 HOMETOWN 10Y ET
H5 MS 7056 ADVANCE 1281
CL 1 DOMINO 3146A
LADY L1 DOMINO 111

CE	BW	WW	YW	Milk	M&G	FAT	REA	MRB	BMI\$	CHB\$
4.8	1.7	51	80	29	54	0.034	0.29	0.16	390	122

One of the best 0227 sons to date balanced thick out of a tremendous hometown daughter back to the good 6136 cow!



LOT 452

LOT 452 SHR 118G HIGH PLAINS 452

REG#	DOB	H/P/S	Act. BW	Act. WW	Act. YW
44708546	4/9/24	Horned	81	600	942

BR 58Y STANMORE 69D
BR 69D GRAND SLAM 118G
BR 15Z MISS HART 111C

CL 1 DOMINO 878F
SHR LADY TIGERLILY 1871
LADY CAPTAIN 956
BR 4W STANMORE 58Y
LVH MISS 24W STAND RIB DOM 17Z
BR 9279 EXTRA DEEP 15Z
BR 52U MISS HART 108Y
CL1 DOMINO 5110C
CL1 DOMINETTE 528C
SH CAPTAIN 553
MISSY SHEPPET 739



CE	BW	WW	YW	Milk	M&G	FAT	REA	MRB	BMI\$	CHB\$
3.6	2.8	55	78	20	47	0.024	0.43	0.23	377	129

Extra stout 118G son that will be sure to grab heads on sale day.



LOT 454 SHR 241K MESA 454

REG#	DOB	H/P/S	Act. BW	Act. WW	Act. YW
44708549	4/9/24	Horned	75	582	842

CL 1 DOMINO 660D 1ET
JH L1 DOMINO 241K
JH L1 DOMINETTE 7112E

UU SENSATION 2053
SENSATIONAL LADY 7114
MISS RED ADDITION 080
GB L1 DOMINO 311W
CL 1 DOMINETTE 1178Y
CL1 DOMINO 472B 1ET
JH MISS ADVANCE 5101C
CHURCHILL SENSATION 028X
UU HALEY 0080
BLR RED ADDITION 175T
PEARL DIAMOND 4011

CE	BW	WW	YW	Milk	M&G	FAT	REA	MRB	BMI\$	CHB\$
11.8	-0.2	43	71	32	53	0.054	0.31	0.20	371	117

Easy calving 241K son that traces his roots back to the matriarch 080. Grandam 080 has left a lasting impact on our program, leaving us with daughters and granddaughters that consistently put sons in the sale report.

• COMING TWO-YEAR-OLD BULLS •



**LOT
461**

SHR 63K HELL CREEK 461

REG#	DOB	H/P/S	Act. BW	Act. WW	Act. YW
44708896	4/10/24	Horned	90	675	892

BR 213B FORTY CREEK 234F
BR 234F FORTY CREEK 63K
BR 157B SUPER DANDY 6E

BR 58Y STANDARD 213B
BR 15Z LADY ET 153C
BR 028X SENSATION 157B
BR 58Y SUPER DANDY 18C
CHURCHILL CAPTAIN 2128Z ET
MISS BONANZA 722
CL 1 DOMINO 432B
LADY L1 DOMINO Z 5143

SH CAPTAIN 553
LADY CAPTAIN 956
MISSY SHEPPET 739



CE	BW	WW	YW	Milk	M&G	FAT	REA	MRB	BMI\$	CHB\$
1.5	3.8	53	87	27	54	0.074	0.48	0.12	450	113

Smooth made appealing 63k son that is double bred to the legendary Sensation 028X.

**LOT
464**

SHR 6194 PRIMETIME 464

REG#	DOB	H/P/S	Act. BW	Act. WW	Act. YW
44708551	4/10/24	Horned	90	648	980

NJW 73S W18 HOMETOWN 10Y ET
H5 10Y HOMETOWN 6194
H5 MS 7056 ADVANCE 1281

SHF WONDER M326 W18 ET
NJW P606 72N DAYDREAM 73S
HH ADVANCE 7056T
H5 MS 486 DOMET 627
CHURCHILL SENSATION 028X
UU HALEY 0080
CHURCHILL RANCHER 8108U ET
LADY MOM 727

UU SENSATION 2053
SHR SENSATIONAL LADY 872
LADY PENDLETON RANCHER 227



CE	BW	WW	YW	Milk	M&G	FAT	REA	MRB	BMI\$	CHB\$
4.5	3.2	57	92	31	60	0.024	0.09	-0.18	345	83

Large outlined 6194 son with adequate growth number from weaning to yearling time, perfect for the operation the backgrounds.



LOT 472

**LOT
472**

SHR 1J WEST RIVER 472

REG#	DOB	H/P/S	Act. BW	Act. WW	Act. YW
44700795	4/11/24	Horned	91	716	1045

XTC 14E SUPER RIB 83G
XTC 83G SUPER RIB 1J
XTC 96C LYNX 65G

DONORAH 8B SUPER LAD 14E
XTC RIB LASS 123D
LBH 106Z EXTRA DEEP 96C
XTC 955W LYNX 12E
KC L1 DOMINO 12050
BCC L1 DOMINETTE 129Y
CHURCHILL CAPTAIN 2128Z ET
LADY ROBIN HOOD 807

BCC L1 DOMINO 489B
LADY L1 MAGNOLIA 0179H
LADY CAPTAIN 748



CE	BW	WW	YW	Milk	M&G	FAT	REA	MRB	BMI\$	CHB\$
0.1	4.2	49	73	34	59	0.014	0.48	-0.03	244	99

World Hereford Conference bull! 472 earned high praise twice this fall, once in September on the Hereford Tour and again in October at the World Hereford Conference in Billings! Stout and rugged you'll like him on sale day!



LOT 477

**LOT
477**

SHR 1010 MATADOR 477

REG#	DOB	H/P/S	Act. BW	Act. WW	Act. YW
44700799	4/12/24	Horned	70	614	1020

OR TP DESERT PRIME
KL DESERT TORO 1010
KL FOXY LADY 421

DS 1045 ADVANCE 3575N
OR 3027 MISS DOMINO 006R
L3 DESERT FOX 842 ET
KL JC LADY ZEUS 132
NJW 73S W18 HOMETOWN 10Y ET
H5 MS 7056 ADVANCE 1281
UU SENSATION 2053
MISS RED ADDITION 080

H5 10Y HOMETOWN 6194
SHR HOMETOWN GIRL 208K
SENSATIONAL LADY 415



CE	BW	WW	YW	Milk	M&G	FAT	REA	MRB	BMI\$	CHB\$
11.6	0.6	51	85	32	57	0.034	0.32	0.40	504	136

Another out-of-the-world Hereford conference pen! Extra complete, easy to look at, smooth made, are just some of the many ways we can describe this bull! He is heifer safe and is out of one of the most prolific and consistent cow families on the ranch! He will grab eyes out in the pens on sale day.

• COMING TWO-YEAR-OLD BULLS •



LOT 483

LOT 483 SHR 0227H LITTLE MO 483

REG#	DOB	H/P/S	Act. BW	Act. WW	Act. YW
44708553	4/12/24	Horned	83	624	815

HH ADVANCE 7088E
JH ADVANCE 0227H
JH L1 DOMINETTE 5141C

CL 1 DOMINO 3146A
MISS L1 WILLOWETT 8259
MISS L1 DOMINETTE 4002

CL 1 DOMINO 420B 1ET
HH MISS ADVANCE 4021B
CL 1 DOMINO 2160Z 1ET
JH MISS ADVANCE 1132Y
HH ADVANCE 1087Y ET
CL 1 DOMINETTE 036X 1ET
KB L1 DOMINO 1112Y
LADY NAVARRO 257

CE	BW	WW	YW	Milk	M&G	FAT	REA	MRB	BMi\$	CHB\$
2.6	2.6	55	85	33	60	0.044	0.23	0.21	358	117

A smooth made 0227H 3146A combination that is sure to leave some cows that will milk.



LOT 485

LOT 485 MLS-1J OUTSIDER 485

REG#	DOB	H/P/S	Act. BW	Act. WW	Act. YW
44700789	4/13/24	Horned	90	646	974

XTC 14E SUPER RIB 83G
XTC 83G SUPER RIB 1J
XTC 96C LYNX 65G

SH CAPTAIN 553
MLS-LADY 856
MLS-LADY XPERT 660

DONORAH 8B SUPER LAD 14E
XTC RIB LASS 123D
LBH 106Z EXTRA DEEP 96C
XTC 955W LYNX 12E
CHURCHILL CAPTAIN 2128Z ET
MISS BONANZA 722
TP DESERT XPERT 327
LADY NORTH STAR 388

CE	BW	WW	YW	Milk	M&G	FAT	REA	MRB	BMi\$	CHB\$
4.2	2.8	52	72	24	50	0.044	0.44	0.16	383	117

A uniquely bred 1j son that has a lot of length, thickness, and middle. He is sure-footed and will go out and make a set of soggy baldies that will demand top dollar!



LOT 487

LOT 487 SHR 0227H LITTLE MO 487

REG#	DOB	H/P/S	Act. BW	Act. WW	Act. YW
44708557	4/13/24	Horned	85	702	1040

HH ADVANCE 7088E
JH ADVANCE 0227H
JH L1 DOMINETTE 5141C

UU SENSATION 2053
SENSATIONAL LADY 5163
LADY ROBIN HOOD 39

CL 1 DOMINO 420B 1ET
HH MISS ADVANCE 4021B
CL 1 DOMINO 2160Z 1ET
JH MISS ADVANCE 1132Y
CHURCHILL SENSATION 028X
UU HALEY 0080
SH ROBIN HOOD 724
LADY STANDARD 728

CE	BW	WW	YW	Milk	M&G	FAT	REA	MRB	BMi\$	CHB\$
3.2	2.1	46	75	32	54	0.044	0.19	0.19	427	116

A moderate BW 0227H son that brings some maternal value to the table. This bull has the highest weaning weight in the sale.



LOT 498

LOT 498 SHR 63K HELL CREEK 498

REG#	DOB	H/P/S	Act. BW	Act. WW	Act. YW
44708899	4/14/24	Horned	73	600	900

BR 213B FORTY CREEK 234F
BR 234F FORTY CREEK 63K
BR 157B SUPER DANDY 6E

THR THOR 3213A
QUEEN THOR 6198
LADY RANCHER 423

BR 58Y STANDARD 213B
BR 15Z LADY ET 153C
BR 028X SENSATION 157B
BR 58Y SUPER DANDY 18C
MAC'S RENDITON 20X
THR MISS THOR 7125T
CHURCHILL RANCHER 8108U ET
LADY L1 DOMINO 107

CE	BW	WW	YW	Milk	M&G	FAT	REA	MRB	BMi\$	CHB\$
7.1	2.0	49	76	20	44	0.044	0.64	0.32	400	149

Moderate BW heifer safe 63K son that has a lot of eye appeal.

• COMING TWO-YEAR-OLD BULLS •



LOT 499

LOT 499 SHR 6194 HOMETOWN BOY 499

REG#	DOB	H/P/S	Act. BW	Act. WW	Act. YW
44708585	4/14/24	Horned	94	642	960

NJW 73S W18 HOMETOWN 10Y ET
H5 10Y HOMETOWN 6194
H5 MS 7056 ADVANCE 1281

BCC L1 DOMINO 489B
LADY L1 MAGNOLIA 0189H
QUEEN THOR 7169

SHF WONDER M326 W18 ET
NJW P606 72N DAYDREAM 73S
HH ADVANCE 7056T
H5 MS 486 DOMET 627
KC L1 DOMINO 12050
BCC L1 DOMINETTE 129Y
THR THOR 3213A
LADY L1 DOMINO 207

CE	BW	WW	YW	Milk	M&G	FAT	REA	MRB	BMI\$	CHB\$
1.1	3.7	57	91	31	59	0.004	0.37	0.05	360	116

Thick made 6194 son that has the disposition for rough country!



LOT 4104

LOT 4104 MLS-079H DOMINANCE 4104

REG#	DOB	H/P/S	Act. BW	Act. WW	Act. YW
44700791	4/14/24	Horned	90	642	962

CL 1 DOMINO 7131E 1ET
CL 1 DOMINO 079H
CL 1 DOMINETTE 1183Y ET

UU SENSATION 2053
MLS-MISS COVERT 8160
LADY NAVARRO 304

HH ADVANCE 5044C ET
CL 1 DOMINETTE 3175A
CL 1 DOMINO 955W
CL 1 DOMINETTE 440P 1ET
CHURCHILL SENSATION 028X
UU HALEY 0080
SR NAVARRO 140X
LADY L1 DOMINO 916

CE	BW	WW	YW	Milk	M&G	FAT	REA	MRB	BMI\$	CHB\$
10.0	0.5	50	89	37	62	0.074	0.19	-0.03	441	93

Maternal half-brother to the Northern plains bull that topped our sale last year, 4104 is sure to leave a set of daughters behind that will be a dominant force helping any program to move the dial forward!



LOT 4107

LOT 4107 SHR 63K HELL CREEK 4107

REG#	DOB	H/P/S	Act. BW	Act. WW	Act. YW
44708900	4/15/24	Horned	90	665	878

BR 213B FORTY CREEK 234F
BR 234F FORTY CREEK 63K
BR 157B SUPER DANDY 6E

CHURCHILL CAPTAIN 2128Z ET
MISS CAPTAIN 805
MISS DAKOTA LAD 968

BR 58Y STANDARD 213B
BR 15Z LADY ET 153C
BR 028X SENSATION 157B
BR 58Y SUPER DANDY 18C
CHURCHILL SENSATION 028X
CHURCHILL LADY 9123W ET
MH DAKOTA LAD 3164
MISS BONANZA 4026

CE	BW	WW	YW	Milk	M&G	FAT	REA	MRB	BMI\$	CHB\$
0.5	3.7	53	89	27	54	0.034	0.18	0.23	478	139

I sure do like these 63K sons! This guy is square, athletic, and thick!



LOT 4113

LOT 4113 SHR 0227H LITTLE MO 4113

REG#	DOB	H/P/S	Act. BW	Act. WW	Act. YW
44708588	4/16/24	Horned	85	598	954

HH ADVANCE 7088E
JH ADVANCE 0227H
JH L1 DOMINETTE 5141C

UU SENSATION 2053
SENSATIONAL LADY 6146
LADY MVP 615

CL 1 DOMINO 420B 1ET
HH MISS ADVANCE 4021B
CL 1 DOMINO 2160Z 1ET
JH MISS ADVANCE 1132Y
CHURCHILL SENSATION 028X
UU HALEY 0080
CHURCHILL MVP 188
MISS EXPLORER 332

CE	BW	WW	YW	Milk	M&G	FAT	REA	MRB	BMI\$	CHB\$
2.1	3.4	55	89	31	59	0.014	0.19	0.06	425	113

A thick made great-footed 0227H son out of a sure-shot Range cow.

• COMING TWO-YEAR-OLD BULLS •



LOT 4129

**LOT
4121**

SHR 079H DOMINO 4121

REG#	DOB	H/P/S	Act. BW	Act. WW	Act. YW
44708595	4/17/24	Horned	80	700	915

CL 1 DOMINO 7131E 1ET
CL 1 DOMINO 079H
CL 1 DOMINETTE 1183Y ET

CL 1 DOMINO 432B
MISSY SHEPPETT 432
MS CAPTAIN 418

HH ADVANCE 5044C ET
CL 1 DOMINETTE 3175A
CL 1 DOMINO 955W
CL 1 DOMINETTE 440P 1ET
CL 1 DOMINO 215Z
CL 1 DOMINETTE 1152Y
CHURCHILL CAPTAIN 2128Z ET
PEARL DIAMOND 941

CE	BW	WW	YW	Milk	M&G	FAT	REA	MRB	BMi\$	CHB\$
5.3	1.7	56	93	34	62	0.054	0.40	0.06	330	124

079 makes them like a cookie-cutter! 4121 is no exception; he even qualifies for the CHB program!

**LOT
4129**

SHR 1J SUPER RIB 4129

REG#	DOB	H/P/S	Act. BW	Act. WW	Act. YW
44708602	4/19/24	Horned	86	654	946

XTC 14E SUPER RIB 83G
XTC 83G SUPER RIB 1J
XTC 96C LYNX 65G

CL 1 DOMINO 3146A
PRINCESS WILLOWETT 0197H
MISS RED ADDITION 235

DONORAH 8B SUPER LAD 14E
XTC RIB LASS 123D
LBH 106Z EXTRA DEEP 96C
XTC 955W LYNX 12E
HH ADVANCE 1087Y ET
CL 1 DOMINETTE 036X 1ET
BLR RED ADDITION 175T
PEARL DIAMOND 680

CE	BW	WW	YW	Milk	M&G	FAT	REA	MRB	BMi\$	CHB\$
4.4	3.5	59	82	25	54	0.014	0.44	-0.01	336	101

A really great 1j son! Deep made extra muscle and one heck of a great momma cow backing him up!



LOT 4131



LOT 4133

**LOT
4131**

SHR 0227H LITTLE MO 4131

REG#	DOB	H/P/S	Act. BW	Act. WW	Act. YW
44708605	4/19/24	Horned	97	630	938

HH ADVANCE 7088E
JH ADVANCE 0227H
JH L1 DOMINETTE 5141C

CL 1 DOMINO 3146A
LADY L1 DOMINO A 6162
LADY L1 DOMINO 162

CL 1 DOMINO 420B 1ET
HH MISS ADVANCE 4021B
CL 1 DOMINO 2160Z 1ET
JH MISS ADVANCE 1132Y
HH ADVANCE 1087Y ET
CL 1 DOMINETTE 036X 1ET
KB L1 DOMINO 563R
MISS BONANZA 438

CE	BW	WW	YW	Milk	M&G	FAT	REA	MRB	BMi\$	CHB\$
-1.7	5.0	64	101	29	60	0.044	0.37	0.10	355	119

Large outlined growthy 0227 son tracing his lineage back to Bonanza.

**LOT
4133**

SHR 221K RAVINE 4133

REG#	DOB	H/P/S	Act. BW	Act. WW	Act. YW
44708612	4/19/24	Horned	90	610	946

CL 1 DOMINO 9108G 1ET
JH L1 DOMINO 221K
JH MISS ADVANCE 7182E

H5 0945 DOMINO 7208 ET
LADY DOMINO 0140H
LADY PENDLETON RANCHER 209

HH ADVANCE 7156E ET
CL 1 DOMINETTE 9184W
HH ADVANCE 5011C ET
JH L1 DOMINETTE 3117A
LJS MARK DOMINO 0945
H5 MS 408 DOMET 764
CHURCHILL RANCHER 8108U ET
MISS BONANZA 846B

CE	BW	WW	YW	Milk	M&G	FAT	REA	MRB	BMi\$	CHB\$
3.0	3.8	61	89	24	55	0.004	0.39	0.08	305	123

Long-spined 221 son with a good CHB tabulation.

• COMING TWO-YEAR-OLD BULLS •



LOT 4149

LOT 4149 SHR 079H BADLANDS 4149

REG#	DOB	H/P/S	Act. BW	Act. WW	Act. YW
44700802	4/21/24	Horned	83	602	964

CL 1 DOMINO 7131E 1ET
CL 1 DOMINO 079H
CL 1 DOMINETTE 1183Y ET

UU SENSATION 2053
LADY SENSATION 704
PRINCESS NAVARRO 231

HH ADVANCE 5044C ET
CL 1 DOMINETTE 3175A
CL 1 DOMINO 955W
CL 1 DOMINETTE 440P 1ET
CHURCHILL SENSATION 028X
UU HALEY 0080
SR NAVARRO 150X
MISS DOMINO 956

CE	BW	WW	YW	Milk	M&G	FAT	REA	MRB	BMI\$	CHB\$
5.8	1.5	48	85	32	56	0.044	0.28	0.02	367	107

This 079 son's name is fitting! Built for tough country and has the ability to make a super set of square-made daughters that will flat milk.



LOT 4150

LOT 4150 SHR 1J SUPER RIB 4150

REG#	DOB	H/P/S	Act. BW	Act. WW	Act. YW
44708619	4/21/24	Horned	82	596	950

XTC 14E SUPER RIB 83G
XTC 83G SUPER RIB 1J
XTC 96C LYNX 65G

UU HARLEY 9130
LADY HARLEY 529
MISS DAKOTA 617

DONORAH 8B SUPER LAD 14E
XTC RIB LASS 123D
LBH 106Z EXTRA DEEP 96C
XTC 955W LYNX 12E
H5 408 DOMINO 7100
UU MS 056 7115
MH DAKOTA LAD 3164
MISS BONANZA 3120

CE	BW	WW	YW	Milk	M&G	FAT	REA	MRB	BMI\$	CHB\$
7.0	2.7	52	76	24	50	0.024	0.30	0.06	347	102

4150 has that same look all the 1J's have, deep bodied, moderate, and full of muscle! Dam 529 is still at work on our range, some sure shot longevity in the mix here, folks.



LOT 4155

LOT 4155 SHR 1010 MATADOR 4155

REG#	DOB	H/P/S	Act. BW	Act. WW	Act. YW
44708621	4/22/24	Horned	85	512	882

OR TP DESERT PRIME
KL DESERT TORO 1010
KL FOXY LADY 421

H5 10Y HOMETOWN 6194
SHR HOMETOWN GIRL 219G
LADY CAPTAIN 956

DS 1045 ADVANCE 3575N
OR 3027 MISS DOMINO 006R
L3 DESERT FOX 842 ET
KL JC LADY ZEUS 132
NJW 73S W18 HOMETOWN 10Y ET
H5 MS 7056 ADVANCE 1281
SH CAPTAIN 553
MISSY SHEPPET 739

CE	BW	WW	YW	Milk	M&G	FAT	REA	MRB	BMI\$	CHB\$
2.2	3.1	56	89	32	60	0.054	0.46	0.37	402	141

It's really hard not to like 4155. Balanced and stout is the best way to describe him! He's royally bred, tracing his roots back to hometown, Captain, and 432B. Not to mention he has 15 of 20 traits in the top 50% of the breed or higher including BMI and CHB!



LOT 4158

LOT 4158 MLS-241K NORTH COUNTRY 4158

REG#	DOB	H/P/S	Act. BW	Act. WW	Act. YW
44700804	4/22/24	Horned	90	590	932

CL 1 DOMINO 660D 1ET
JH L1 DOMINO 241K
JH L1 DOMINETTE 7112E

H5 10Y HOMETOWN 6194
MLS-LADY HOMETOWN 9134
MLS-LADY OF THE NORTH 4030

GB L1 DOMINO 311W
CL 1 DOMINETTE 1178Y
CL 1 DOMINO 472B 1ET
JH MISS ADVANCE 5101C
NJW 73S W18 HOMETOWN 10Y ET
H5 MS 7056 ADVANCE 1281
SH YANKEE 139
LADY L1 DOMINO 26

CE	BW	WW	YW	Milk	M&G	FAT	REA	MRB	BMI\$	CHB\$
2.3	2.9	55	86	31	59	0.034	0.58	0.04	357	113

4158 is an extremely deep-made stout 241 son that's out of one heck of a good 6194 daughter!

• COMING TWO-YEAR-OLD BULLS •



**LOT
4159**

SHR 1J SUPER RIB 4159

REG#	DOB	H/P/S	Act. BW	Act. WW	Act. YW
44708623	4/22/24	Horned	85	568	856

XTC 14E SUPER RIB 83G
XTC 83G SUPER RIB 1J
XTC 96C LYNX 65G

SH MR TRUST 622
SHR TRUSTED LADY 1136I
LADY RANCHER 445

DONORAH 8B SUPER LAD 14E
XTC RIB LASS 123D
LBH 106Z EXTRA DEEP 96C
XTC 955W LYNX 12E
NJW 73S M326 TRUST 100W ET
L3 LADY DIAMOND 8000
CHURCHILL RANCHER 8108U ET
MISS RANCHERETTE 121



CE	BW	WW	YW	Milk	M&G	FAT	REA	MRB	BMI\$	CHB\$
3.7	3.7	59	86	28	58	0.014	0.49	0.10	345	112

Long-spined 1j son that should inject some pay weight to a set of calves.



LOT 4160

**LOT
4160**

SHR HELL CREEK 4160

REG#	DOB	H/P/S	Act. BW	Act. WW	Act. YW
44708901	4/22/24	Horned	90	530	810

BR 213B FORTY CREEK 234F
BR 234F FORTY CREEK 63K
BR 157B SUPER DANDY 6E

H5 10Y HOMETOWN 6194
HOMETOWN GIRL 8226
NORTHERN LIGHT LADY 3144

BR 58Y STANDARD 213B
BR 15Z LADY ET 153C
BR 028X SENSATION 157B
BR 58Y SUPER DANDY 18C
NJW 73S W18 HOMETOWN 10Y ET
H5 MS 7056 ADVANCE 1281
UPS DOMINO 3027
MISS EXCEL 601

CE	BW	WW	YW	Milk	M&G	FAT	REA	MRB	BMI\$	CHB\$
2.2	3.6	54	82	25	52	0.024	0.41	0.09	480	115

Flashy 63K son that qualifies for the Maternal Advantage and Premium Red Baldy Programs.



LOT 4166

**LOT
4166**

MLS-079H ALLIANCE 4166

REG#	DOB	H/P/S	Act. BW	Act. WW	Act. YW
44700807	4/23/24	Scurred	90	508	900

CL 1 DOMINO 7131E 1ET
CL 1 DOMINO 079H
CL 1 DOMINETTE 1183Y ET

LJR 023R WHITMORE 10W
NJW 76S 10W STARDUST 170G ET
NJW 55N STARDUST 76S

HH ADVANCE 5044C ET
CL 1 DOMINETTE 3175A
CL 1 DOMINO 955W
CL 1 DOMINETTE 440P 1ET
KJ C&L J119 LOGIC 023R ET
LJR MICKEY 278N
NJW BW TRAILDUST 161L
NJW 57G SPIRIT QUEEN 55N ET



CE	BW	WW	YW	Milk	M&G	FAT	REA	MRB	BMI\$	CHB\$
7.7	0.0	44	73	29	50	-0.006	0.69	-0.12	387	94

Something different here, a scurred 079 son with lots of cow power CED, and BW EPDs after genomic testing indicate that he should be heifer safe.



LOT 4173

**LOT
4173**

SHR MESA 4173

REG#	DOB	H/P/S	Act. BW	Act. WW	Act. YW
44708663	4/25/24	Horned	80	610	890

CL 1 DOMINO 660D 1ET
JH L1 DOMINO 241K
JH L1 DOMINETTE 7112E

H5 0945 DOMINO 7208 ET
GOLDEN GIRL 9171
LADY L1 DOMINO 111

GB L1 DOMINO 311W
CL 1 DOMINETTE 1178Y
CL 1 DOMINO 472B 1ET
JH MISS ADVANCE 5101C
LJS MARK DOMINO 0945
H5 MS 408 DOMET 764
KB L1 DOMINO 9175W
MISS DOMINO 931

CE	BW	WW	YW	Milk	M&G	FAT	REA	MRB	BMI\$	CHB\$
7.7	1.4	52	82	29	55	0.044	0.46	0.20	294	129

Smooth made long 241 son that traces his roots back to the influential matriarch 931.

• COMING TWO-YEAR-OLD BULLS •



LOT 4177

LOT 4177 SHR 241K MESA 4177

4177

REG#	DOB	H/P/S	Act. BW	Act. WW	Act. YW
44708625	4/26/24	Horned	73	580	816
CL 1 DOMINO 660D 1ET			GB L1 DOMINO 311W		
JH L1 DOMINO 241K			CL 1 DOMINETTE 1178Y		
JH L1 DOMINETTE 7112E			CL1 DOMINO 472B 1ET		
			JH MISS ADVANCE 5101C		
H5 10Y HOMETOWN 6194			NJW 73S W18 HOMETOWN 10Y ET		
HOMETOWN GIRL 9226			H5 MS 7056 ADVANCE 1281		
LADY RANCHER 4030			CHURCHILL RANCHER 8108U ET		
			MISS RED ADDITION 140		

CE	BW	WW	YW	Milk	M&G	FAT	REA	MRB	BMI\$	CHB\$
11.5	-0.3	48	76	32	56	0.044	0.38	0.21	325	126

Another smooth made 241 son with heifer safe numbers.



LOT 4182 SHR 9201G BOZEMAN 4182

4182

REG#	DOB	H/P/S	Act. BW	Act. WW	Act. YW					
44708664	4/27/24	Horned	84	590	900					
CL 1 DOMINO 710E 1ET		CL 1 DOMINO 215Z								
CL 1 DOMINO 9201G 1ET		HH MISS ADVANCE 9119W								
CL 1 DOMINETTE 2185Z		CL 1 DOMINO 994W 1ET								
		CL 1 DOMINETTE 966W								
CHURCHILL CAPTAIN 2128Z ET		CHURCHILL SENSATION 028X								
LADY CAPTAIN 7120		CHURCHILL LADY 9123W ET								
LADY DOMINO 856		KB L1 DOMINO 567R								
		MISS BONANZA 276								
CE	BW	WW	YW	Milk	M&G	FAT	REA	MRB	BMI\$	CHB\$
4.6	2.6	48	75	26	50	0.024	0.22	0.13	348	114

This 9201 son boasts a moderate milk EPD, which is perfect for the cattlemen who run with fewer inputs.



LOT 4183

LOT 4183 SHR 6194 HOMETOWN BOY 4183

4183

REG#	DOB	H/P/S	Act. BW	Act. WW	Act. YW					
44708633	4/27/24	Horned	93	646	950					
NJW 73S W18 HOMETOWN 10Y ET H5 10Y HOMETOWN 6194 H5 MS 7056 ADVANCE 1281			SHF WONDER M326 W18 ET NJW P606 72N DAYDREAM 73S HH ADVANCE 7056T H5 MS 486 DOMET 627 CHURCHILL SENSATION 028X CHURCHILL LADY 9123W ET SH BONANZA 5007 MISS EXPLORER 486							
CHURCHILL CAPTAIN 2128Z ET SENSIBLE LADY 5192 MISS BONANZA 929										
CE	BW	WW	YW	Milk	M&G	FAT	REA	MRB	BMI\$	CHB\$
2.1	3.4	54	87	29	56	0.004	0.31	0.07	377	113

These 6194 sons have been a staple in our production sale for years now. We are sad that this is the last son to be registered from that sire group. But boy, does this guy fit the mold. You'll like his depth and muscle.



LOT 4184

LOT 4184 SHR 0227H LITTLE MO 4184

4184

REG#	DOB	H/P/S	Act. BW	Act. WW	Act. YW
44708637	4/27/24	Horned	88	590	960
HH ADVANCE 7088E			CL 1 DOMINO 420B 1ET		
JH ADVANCE 0227H			HH MISS ADVANCE 4021B		
JH L1 DOMINETTE 5141C			CL 1 DOMINO 2160Z 1ET		
			JH MISS ADVANCE 1132Y		
UU SENSATION 2053			CHURCHILL SENSATION 028X		
SENSATIONAL LADY 917G			UU HALEY 0080		
HARLEY MAMA 489			UU HARLEY 9130		
			LADY L1 DOMINO 05		

CE	BW	WW	YW	Milk	M&G	FAT	REA	MRB	BMI\$	CHB\$
2.7	3.0	48	82	31	55	0.054	0.13	0.16	429	108

Balanced 0227H out of a solid 2053 daughter.

• COMING TWO-YEAR-OLD BULLS •



LOT 4185

LOT 4185 MLS- 0227H LITTLE MO 4185

REG#	DOB	H/P/S	Act. BW	Act. WW	Act. YW
44700808	4/28/24	Scurred	95	646	912

HH ADVANCE 7088E
JH ADVANCE 0227H
JH L1 DOMINETTE 5141C

CL 1 DOMINO 420B 1ET
HH MISS ADVANCE 4021B
CL 1 DOMINO 2160Z 1ET
JH MISS ADVANCE 1132Y
CL 1 DOMINO 5110C
CL 1 DOMINETTE 528C
NJW 73S W18 HOMETOWN 10Y ET
SR DURITA 265Z

CL 1 DOMINO 878F
PRETTYLADY 0103H
SR WARDETTE 8002F



CE	BW	WW	YW	Milk	M&G	FAT	REA	MRB	BMI\$	CHB\$
-2.6	5.2	55	89	24	52	0.034	0.31	0.17	296	123

Large outlined stout made scurred bull with some power! He'd really fire on a set of black cows!



LOT 4188 SHR 1J SUPER RIB 4188

REG#	DOB	H/P/S	Act. BW	Act. WW	Act. YW
44708638	4/29/24	Horned	95	640	1005

XTC 14E SUPER RIB 83G
XTC 83G SUPER RIB 1J
XTC 96C LYNX 65G

BCC L1 DOMINO 489B
LADY L1 MAGNOLIA 061H
MISS WILLOWETT 797

DONORAH 8B SUPER LAD 14E
XTC RIB LASS 123D
LBH 106Z EXTRA DEEP 96C
XTC 955W LYNX 12E
KC L1 DOMINO 12050
BCC L1 DOMINETTE 129Y
CL 1 DOMINO 5146A
LADY T-BONE ROBIN HOOD 21



CE	BW	WW	YW	Milk	M&G	FAT	REA	MRB	BMI\$	CHB\$
-1.6	5.5	65	96	33	66	-0.006	0.77	-0.04	377	114

Here's a really cool 1J son that has a lot of bells and whistles! Through genomic testing, we found this guy is a performance powerhouse! Maternal half-brother is covering cows for North M Cattle and Hay.



LOT 4196

LOT 4196 SHR 1J SUPER RIB 4196

REG#	DOB	H/P/S	Act. BW	Act. WW	Act. YW
44708639	5/1/24	Horned	96	660	954

XTC 14E SUPER RIB 83G
XTC 83G SUPER RIB 1J
XTC 96C LYNX 65G

DONORAH 8B SUPER LAD 14E
XTC RIB LASS 123D
LBH 106Z EXTRA DEEP 96C
XTC 955W LYNX 12E
KC L1 DOMINO 12050
BCC L1 DOMINETTE 129Y
CHURCHILL CAPTAIN 2128Z ET
PEARL DIAMOND 941

BCC L1 DOMINO 489B
MAGNOLIA L1 DOMINO B 7123
MS CAPTAIN 418



CE	BW	WW	YW	Milk	M&G	FAT	REA	MRB	BMI\$	CHB\$
2.7	3.7	60	89	37	67	0.034	0.57	-0.06	374	111

This guy's really easy to find. Deep made thick and rugged! This maternally driven 1J son will drive the needle forward for those of you making blue ribbon females!



LOT 4200 SHR 0227H LITTLE MO 4200

REG#	DOB	H/P/S	Act. BW	Act. WW	Act. YW
44708640	5/2/24	Horned	85	564	930

HH ADVANCE 7088E
JH ADVANCE 0227H
JH L1 DOMINETTE 5141C

UU HARLEY 9130
HARLEY MAMA 489
LADY L1 DOMINO 05

CL 1 DOMINO 420B 1ET
HH MISS ADVANCE 4021B
CL 1 DOMINO 2160Z 1ET
JH MISS ADVANCE 1132Y
H5 408 DOMINO 7100
UU MS 056 7115
KB L1 DOMINO 563R
MISS BONANZA 3120



CE	BW	WW	YW	Milk	M&G	FAT	REA	MRB	BMI\$	CHB\$
3.3	3.1	47	77	27	50	0.044	0.14	0.19	372	115

Square made 0227 son with a true queen of the range backing him up!

• COMING TWO-YEAR-OLD BULLS •



LOT 4204

LOT 4204 SHR 079H DOMINO 4204

REG#	DOB	H/P/S	Act. BW	Act. WW	Act. YW
44708649	5/3/24	Horned	75	562	864
CL 1 DOMINO 7131E 1ET CL 1 DOMINO 079H CL 1 DOMINETTE 1183Y ET CL 1 DOMINO 3146A SHR L1 DOMINETTE 879 LADY PENDLETON RANCHER 204					
HH ADVANCE 5044C ET CL 1 DOMINETTE 3175A CL 1 DOMINO 955W CL 1 DOMINETTE 440P 1ET HH ADVANCE 1087Y ET CL 1 DOMINETTE 036X 1ET CHURCHILL RANCHER 8108U ET DAISY IMPRINT 412					

CE	BW	WW	YW	Milk	M&G	FAT	REA	MRB	BMI\$	CHB\$
9.1	0.8	54	85	31	58	0.044	0.33	0.05	286	112

Deep barreled 079 son that will add additional value to a set of heifers! Dam 879 is a great cow that raises stout ones.



LOT 4205

LOT 4205 SHR 241K MESA 4205

REG#	DOB	H/P/S	Act. BW	Act. WW	Act. YW
44708641	5/4/24	Horned	73	574	790
CL 1 DOMINO 660D 1ET JH L1 DOMINO 241K JH L1 DOMINETTE 7112E SR SCOPE 117E SHR SNIPER LADY 182I SENSATIONAL LADY 6176					
GB L1 DOMINO 311W CL 1 DOMINETTE 1178Y CL 1 DOMINO 472B 1ET JH MISS ADVANCE 5101C CL 1 DOMINO 0130X 1ET SR BENITA 464B UU SENSATION 2053 LADY L1 DOMINO 150					

CE	BW	WW	YW	Milk	M&G	FAT	REA	MRB	BMI\$	CHB\$
8.7	0.5	48	79	34	58	0.054	0.37	0.20	339	124

Good balanced bull that should work on heifers!



LOT 4244

LOT 4244 MLS-1JGRASSLANDS 4244

REG#	DOB	H/P/S	Act. BW	Act. WW	Act. YW
44700810	5/20/24	Horned	90	578	880
XTC 14E SUPER RIB 83G XTC 83G SUPER RIB 1J XTC 96C LYNX 65G CL 1 DOMINO 432B MLS-LADY L1 DOMINO 153I LADY L1 DOMINO 26					
DONORAH 8B SUPER LAD 14E XTC RIB LASS 123D LBH 106Z EXTRA DEEP 96C XTC 955W LYNX 12E CL 1 DOMINO 215Z CL 1 DOMINETTE 1152Y KB L1 DOMINO 567R DAISY IMPRINT 412					



CE	BW	WW	YW	Milk	M&G	FAT	REA	MRB	BMI\$	CHB\$
5.0	3.0	55	80	22	50	0.074	0.34	0.13	340	111

Here's a thick-made wide 1J son out of a great young cow that will likely climb the ranks.



• COMMERCIAL BULLS •



LOT 443

**LOT
443**

Commercial Bull 443

REG#	DOB	H/P/S	Act. BW	Act. WW	Act. YW
na		Horned	93	624	949

JH ADVANCE 0227H X 0128 COW

Square made thick bull designed to cover ground.



LOT 469

**LOT
469**

Commercial Bull 469

REG#	DOB	H/P/S	Act. BW	Act. WW	Act. YW
na		Horned	89	592	856

JH ADVANCE 0227H X 183 COW

Square hipped big middled 0227 son that will make a dang good set of baldies.



LOT 490

**LOT
490**

Commercial Bull 490

REG#	DOB	H/P/S	Act. BW	Act. WW	Act. YW
na		Horned	88	582	910

XTC SUPER RIB 1J X 0123 COW

Deep made stout 1j son that's a sure fire way to ad volume and muscle.



LOT 4125

**LOT
4125**

Commercial Bull 4125

REG#	DOB	H/P/S	Act. BW	Act. WW	Act. YW
na		Horned	70	473	850

KL DESERT TORO 1010X 2161 COW

Soggy extra thick helper bull prospect.

**LOT
4253**

Commercial Bull 4253

REG#	DOB	H/P/S	Act. BW	Act. WW	Act. YW
na		Horned	96	568	860

H5 10Y HOMETOWN 6194 X 0144 COW

Long, thick, and square made bull with a lot to offer.



LOT 4253

• 2026 BRED HEIFERS •

These bred heifers come straight out of our replacement pen and represent the very top end of what we keep for ourselves. They are deep-bodied, sound, and built to thrive in tough, real-world ranch conditions. This is a uniform, no-excuses set of females who are ready to go to work and stay productive for years to come.

The heifers are bred to Angus heifer bulls, FCC Hickock 306 from Ficek Cattle Company, Manning, ND, and Ellingson Open Range 4744, Ellingson Angus, St. Anthony, ND. All heifers were pregnancy-checked in December, poured, and given a 7-way vaccination by Dr. Chance Noyce of Circle C Veterinary Service. They have been developed with longevity, fertility, and function as the priority from day one.

Since birth, the heifers have received a full line of animal health shots. They have been Bangs Vaccinated and have had their pre-breeding shots.

If you have any questions about this set of heifers, don't hesitate to reach out to Mike (701-290-1191) or Matt (701-690-4860).

SORENSEN RANCH

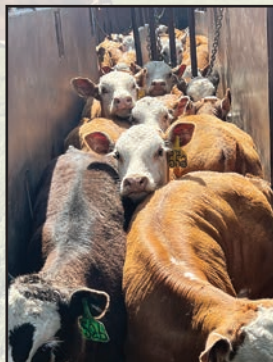
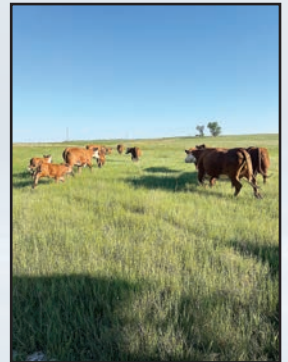
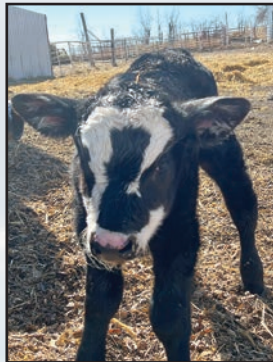
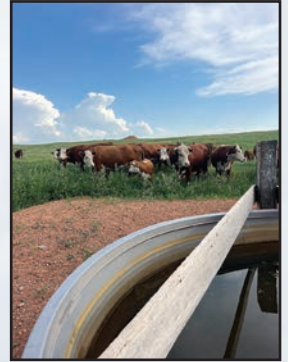
The Sorenson family resides just outside of Watford City, North Dakota, where they focus on producing real-world, functional cattle built to thrive in the harsh conditions of the North Dakota Badlands. Their program is centered around rugged, maternally driven genetics, resulting in a consistent, high-quality set of replacement females and feeder cattle year after year.

This year, Sorenson Ranch is proud to consign 30 front-end replacement heifers that are built to go to work and develop into a productive, long-lasting cow herd.

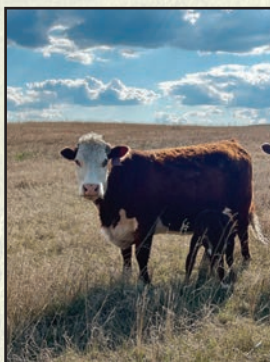
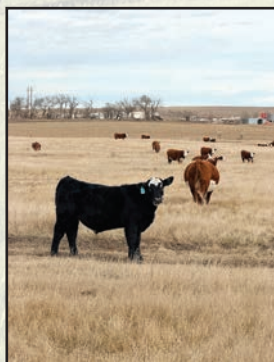
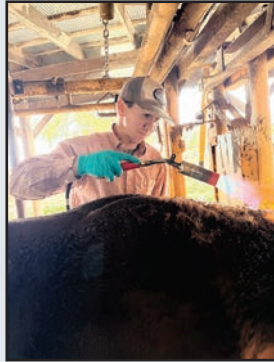
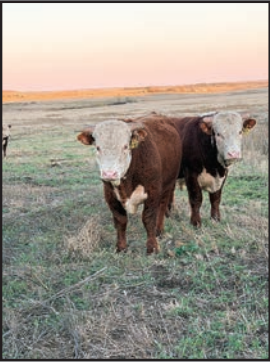


Thank You For Attending Our Sale!

Around the Ranch



Around the Ranch



STROH HEREFORDS
1010 Hwy 22 S
Killdeer, ND 58640

PRESORTED
FIRST-CLASS
U.S. POSTAGE
PAID
UNITED
PRINTING



36th Annual Ranch-Ready Production Sale
THURSDAY, FEBRUARY 5, 2026
— 1:00 p.m. (MT) • At the Ranch